



## Charteris Road, NW6

### Leasehold - £824,950

A beautifully presented three-bedroom duplex flat occupying the First and Second Floors of a period building in Queen's Park. A rare opportunity to acquire a spacious, contemporary home in one of North West London's most sought-after locations.

The First Floor features a spacious west-facing reception room with excellent natural light; a contemporary kitchen/breakfast room with high-quality fittings; a family bathroom and two double bedrooms. On the way upstairs to the second floor is direct access to a large private roof terrace, ideal for entertaining or relaxing outdoors. The Second Floor comprises the principal bedroom with stripped wooden flooring and an en-suite shower room. Additional features include ample storage and flexible living space across the duplex layout.

The property is a short stroll from Lonsdale Road, known for its independent cafés, restaurants, delis, boutique shops, and a strong community feel. Queen's Park itself provides green spaces, sports facilities, and walking routes. For transport, the property is conveniently located near Queen's Park Station, offering Bakerloo & Lioness Line services, providing quick access to Central London.

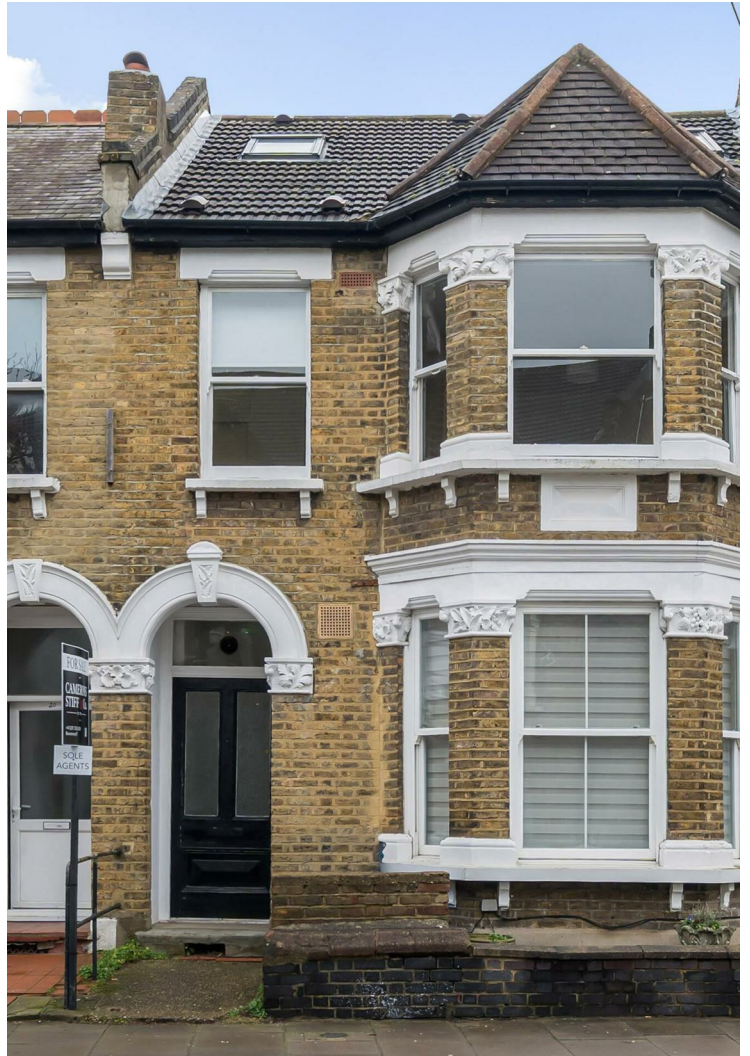


020 7328 2828

[enquiries@cameronsstiff.co.uk](mailto:enquiries@cameronsstiff.co.uk)

[cameronsstiff.co.uk](http://cameronsstiff.co.uk)





## Charteris Road, London, NW6

Approximate Area = 1055 sq ft / 98 sq m (excludes void)

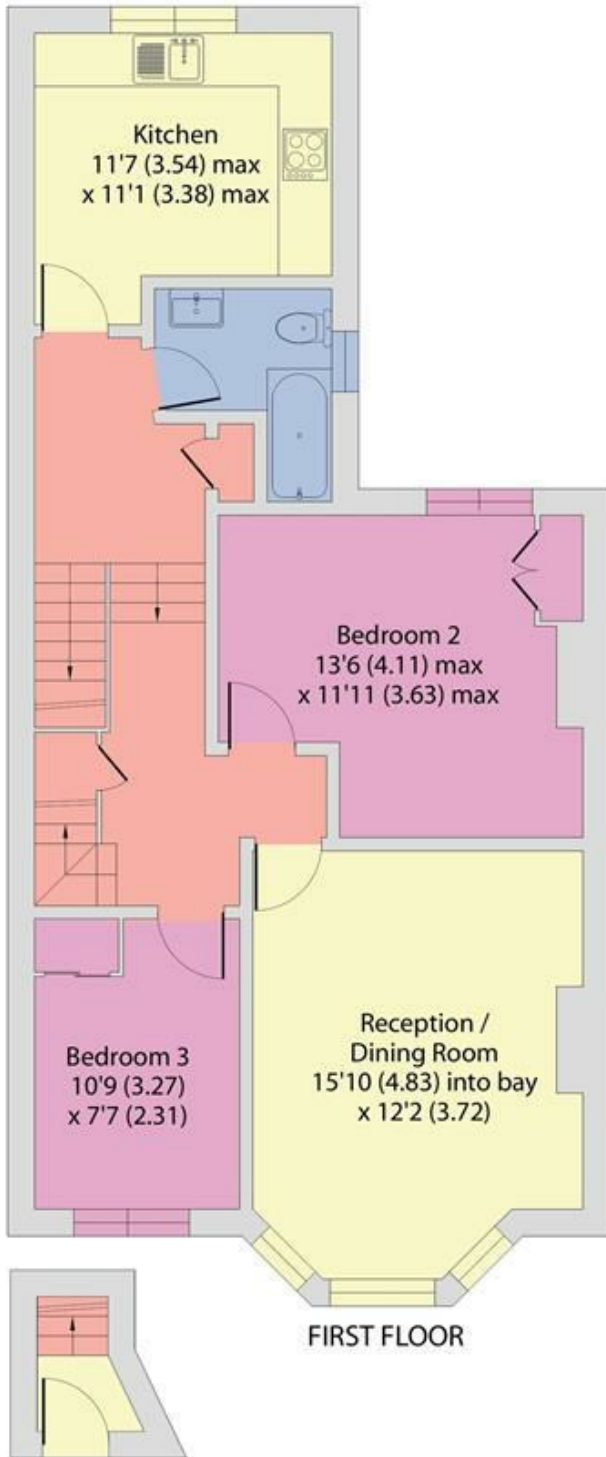
Limited Use Area(s) = 59 sq ft / 5.4 sq m

Total = 1114 sq ft / 103.4 sq m

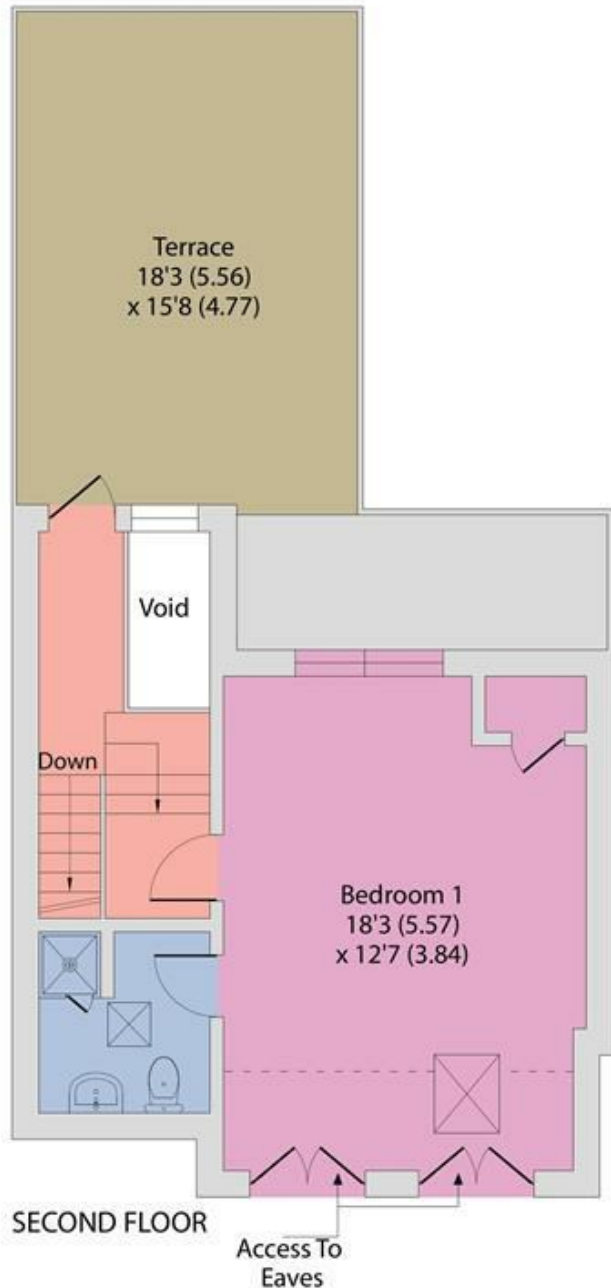
For identification only - Not to scale



Denotes restricted head height



GROUND FLOOR



SECOND FLOOR

EPC: D

Ref: 15066734



Floor plan produced in accordance with RICS Property Measurement 2nd Edition, Incorporating International Property Measurement Standards (IPMS2 Residential). © nichecom 2026. Produced for Camerons Stiff & Co. REF: 1417923

