



TK International
020 7794 8700
www.t-k.co.uk

Residential Sales
Residential Lettings
Property Management

Sales Office:
9 Heath Street
Hampstead
London NW3 6TP
E: sales@t-k.co.uk

Lettings Office:
16-18 Heath Street
Hampstead
London NW3 6TE
E: lettings@t-k.co.uk

tk.international
TK International
TK International

Est.
1998



Frognal Gardens Hampstead Village NW3

Set across the second and third floors of a striking Edwardian villa in the centre of Hampstead Village, this outstanding four-bedroom duplex apartment effortlessly blends period charm with refined contemporary interiors.

Entered via the first floor, the apartment opens onto an impressive main living level, centred around a dramatic vaulted reception room and a bespoke kitchen equipped with Gaggenau and Sub-Zero appliances. Thoughtfully designed custom cabinetry features throughout, while doors open onto a west-facing balcony with attractive rooftop and leafy treetop views.

The accommodation is arranged over two floors and includes a superb principal bedroom suite with ensuite bathroom, a second double bedroom and a family bathroom on the main level. The upper floor provides two further double bedrooms together with a guest WC. The property also enjoys use of a communal garden

Presented to an exceptional standard, the apartment also benefits from underfloor heating in the kitchen and bathrooms, air conditioning to the principal living area, KAIA designer lighting, Buster & Punch ironmongery and a carefully considered specification offering modern luxury and comfort.

Frognal Gardens is widely regarded as one of Hampstead's premier residential addresses, enviably positioned just moments from the boutiques, cafés, restaurants and everyday amenities of Hampstead Village including Hampstead Underground Station (Northern Line).

£2,600,000

Share of Freehold



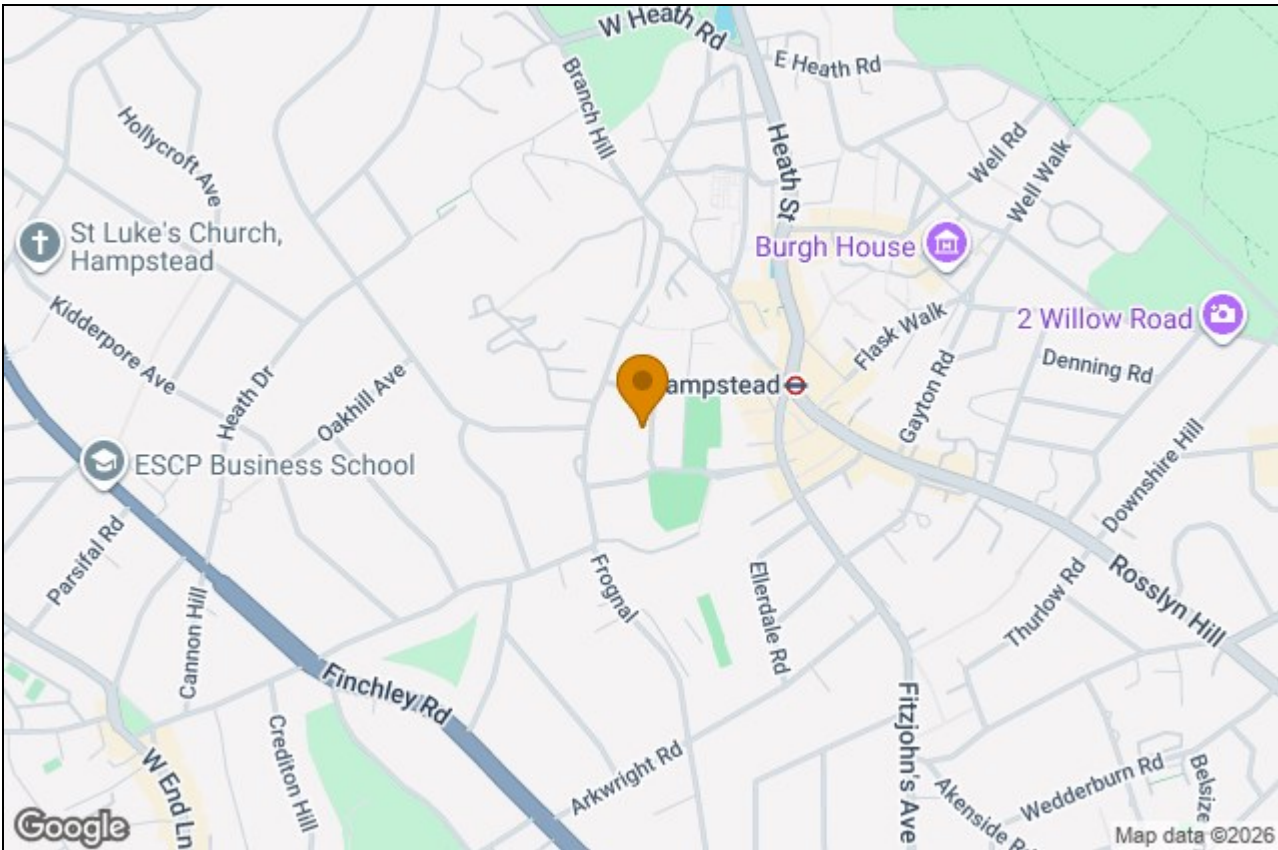












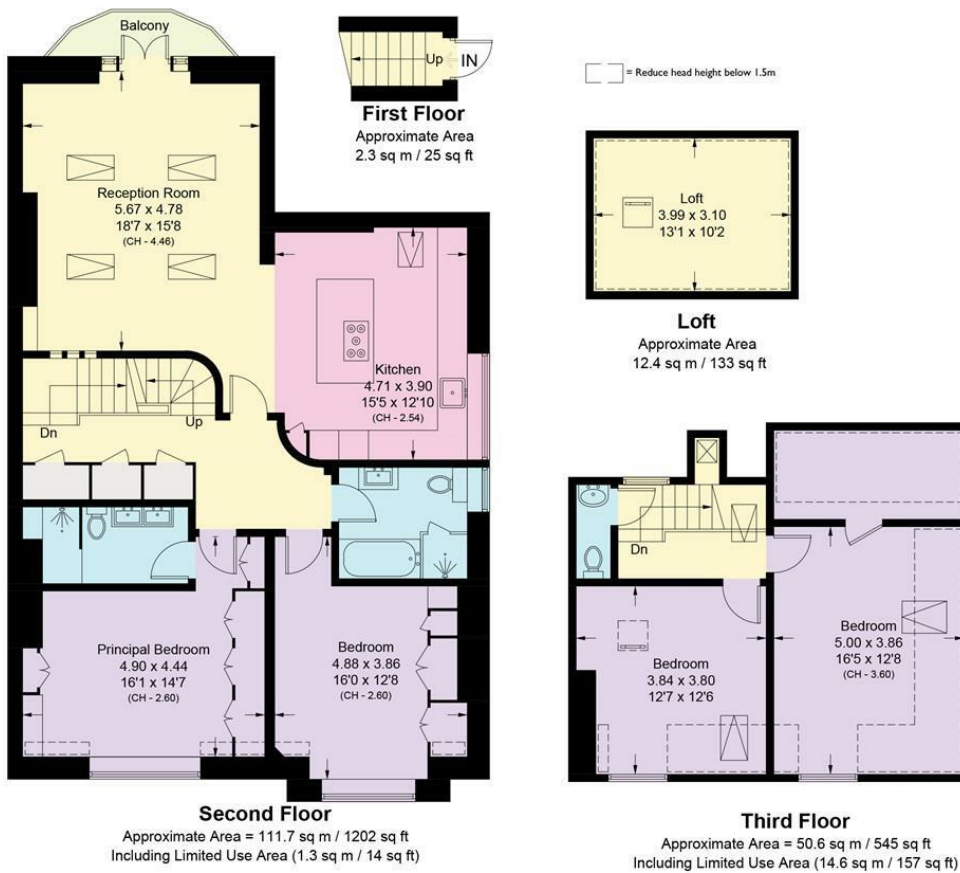
Frognal Gardens, NW3

Approximate Area = 164.6 sq m / 1772 sq ft

Loft = 12.4 sq m / 133 sq ft

Total = 177.0 sq m / 1905 sq ft

(Including Limited Use Area 15.9 sq m / 171 sq ft)



Surveyed and drawn in accordance with the International property measurements standards (IPMS 2: Residential) Not drawn to scale unless stated.
Whilst every care is taken in the preparation of this plan, please check all dimensions, shapes and compass bearings before making any decisions reliant upon them.