



Hayward Mews, SE4

£3,400 Per calendar month

Dexters



Hayward Mews, SE4

A beautifully presented four double bedroom modern mews house situated within a gated development, presented in excellent condition throughout. The property further benefits from off-street parking and solar panels, enhancing its energy efficiency.

The ground floor comprises a spacious open-plan kitchen/reception room with direct access to a private, low-maintenance garden, a W.C and a versatile double bedroom currently utilised as a home office. Upstairs, there are three further double bedrooms, including a bedroom with an en-suite shower room, alongside a contemporary family bathroom.

Hayward Mews is a stone's throw away from Crofton Park Station with a walkway which leads you to the entrance to the station and close to the various cafés, restaurants and bars that Crofton Park has to offer.

Features

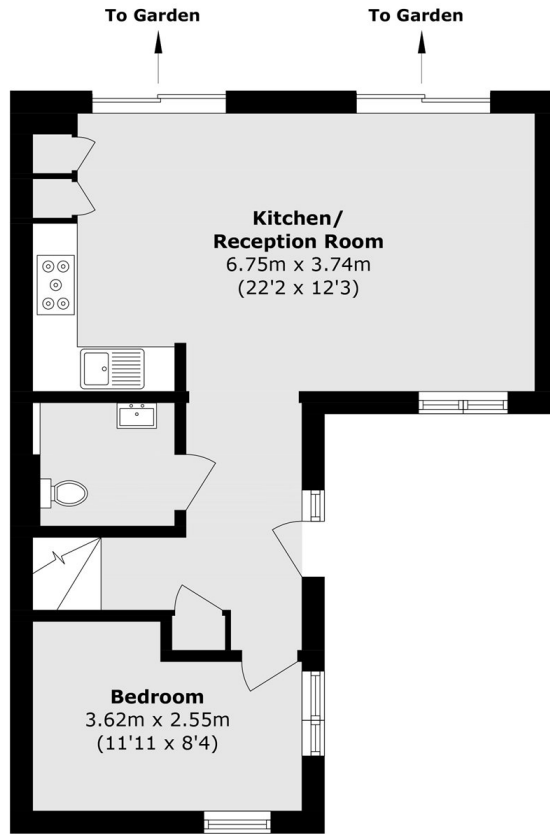
- Modern Mews House
- Four Double Bedrooms
- Off-Street Parking
- Private Rear Garden
- Gated Development
- Close To Transport



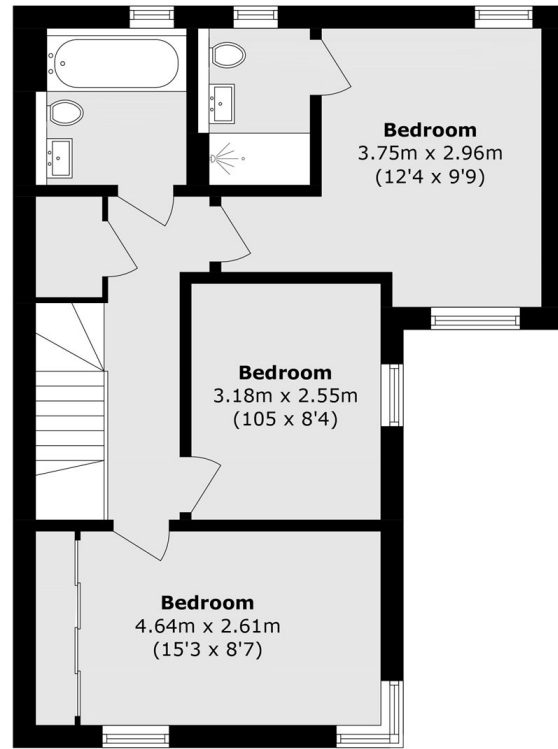




Hayward Mews, London, SE4



Ground Floor



First Floor

Total area (approx.): 97.3 sq. m (1047.3 sq. ft)