



Rockingham Street, SE1

£325,000

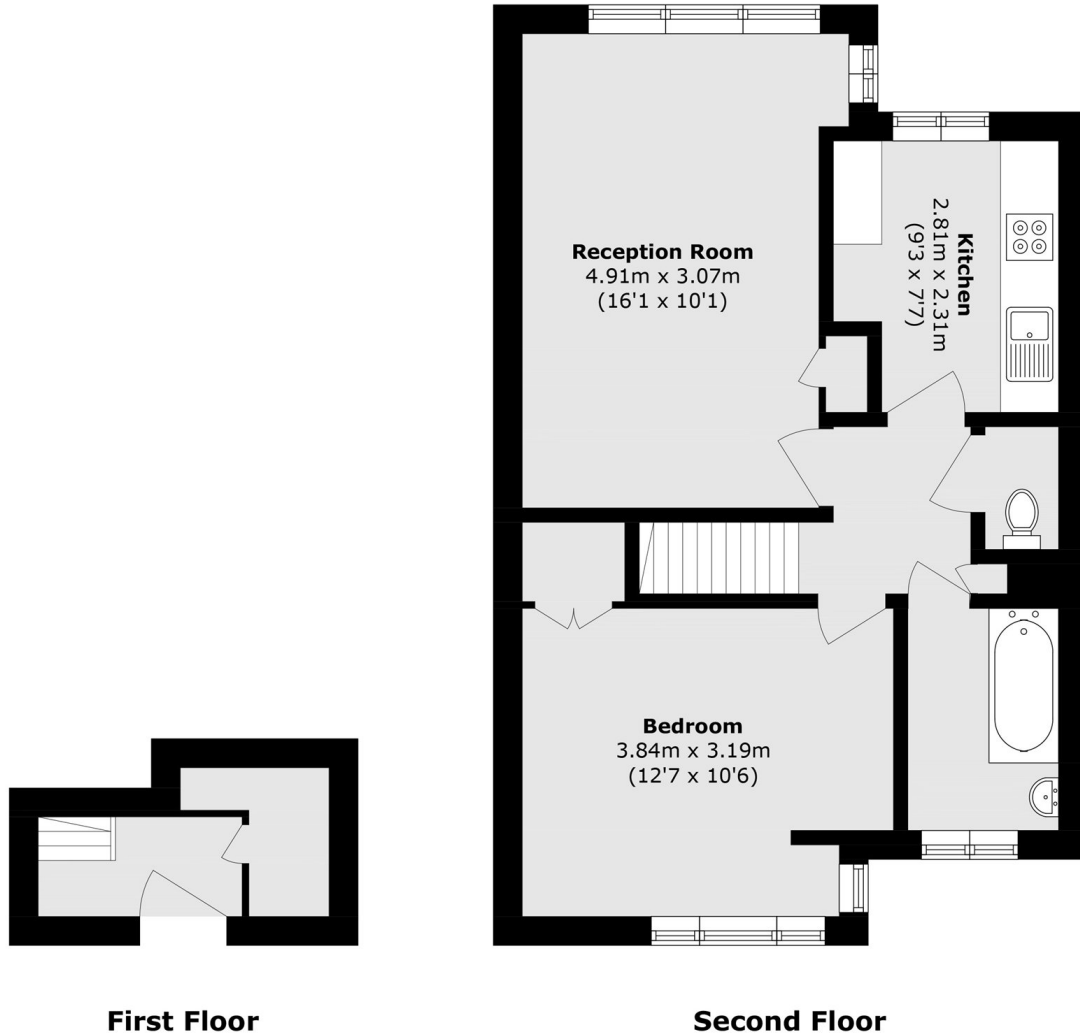
A highly attractive split level flat with a large living room and a separate galley-style kitchen, a generous double bedroom, ample storage, a modern bathroom and separate WC. Sold chain free, with on-street permit parking available.

Smeaton Court is enviably located, moments from Elephant & Castle tube station and overground, whilst also within easy reach of Borough and London Bridge. There are numerous amenities on your door step and excellent transport links across the Capital.

Features

Split Level - 1st and 2nd Floor
Larger than Average
Separate Galley-Style Kitchen
Large Living Room
Permit Parking Available
Chain Free Sale

Rockingham Street,
London, SE1



Total area (approx.): 50.2 sq. m (540.4 sq. ft)