



Dollis Hill Lane, NW2

£475,000

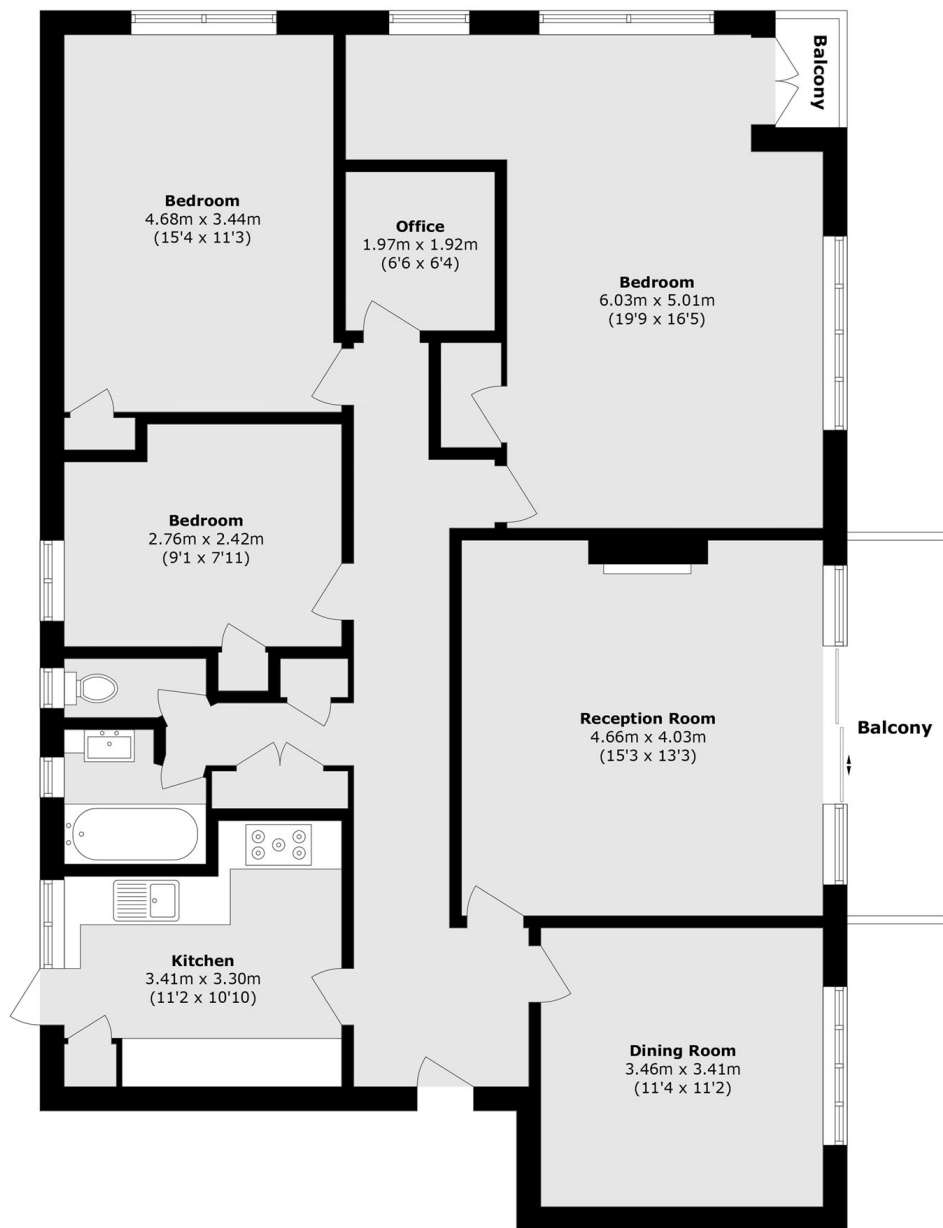
A substantially sized three double bedroom flat located a stones throw away from the ever popular Gladstone Park. The property has two reception rooms, a separate kitchen, three balconies and stunning views of the London skyline. Additionally the property benefits from a lease in excess of 900 years.

Dollis Hill Lane is conveniently located for easy access of Gladstone Park, the A406, A5 and M1. Dollis Hill underground station (Jubilee line) and Brent Cross West station (Thameslink) are also within 1 mile from the property.

Features

- Purpose Built Flat
- Three Double Bedrooms
- Two Reception Rooms
- Separate Kitchen
- Three Balconies
- Lease In Excess Of 900 Years

Dollis Hill Lane, London, NW2



Total area (approx.): 126.7 sq. m (1363.7 sq. ft)

Balcony area (approx.): 6.9 sq. m (74.2 sq. ft)