



Ffordd Maendy, offers over £350,000

- Off Street Parking And Garage
- Quiet New Development
- En-suite To Master Bedroom
- Modern Throughout
- Spacious Family Home
- Fitted Wardrobes In The Bedroom's
- EPC Rating: C



 4  2  2



About the property

A well-presented and spacious four-bedroom detached family home, ideally located within the highly sought-after development of Sarn, Bridgend. This attractive double-fronted property offers generous and versatile accommodation, making it an excellent choice for growing families.

The home is set back with a detached garage and driveway providing ample off-road parking, while to the rear lies a generous and well-maintained garden, perfect for outdoor entertaining, family time, or relaxing in a private setting.

The ground floor comprises a welcoming entrance hall and a bright spacious reception room. The heart of the home is the sociable family kitchen diner with built in appliances, ideal for modern family living. Leading from the kitchen is a separate utility space with washing machine and tumble dryer to remain, providing additional access to the rear garden and giving access to the downstairs cloakroom, offering practical living.

To the first floor are four generous bedrooms, all of excellent proportions. The impressive master suite occupies one end of the property, offering a sense of privacy and benefiting from a well-appointed ensuite bathroom. The remaining bedrooms are served by the family bathroom. Three of four bedrooms have



Accommodation

Lounge

10' 6" x 8' 10" (3.20m x 2.69m)

Reception Room

15' 9" x 9' 10" (4.80m x 3.00m)

Kitchen/Dining Room

15' 9" x 14' 9" (4.80m x 4.50m)

Utility Room

6' 3" x 4' 1" (1.91m x 1.24m)

Bedroom 1

13' 9" x 9' 2" (4.19m x 2.79m)

Bedroom 2

12' 10" x 8' 6" (3.91m x 2.59m)

Bedroom 3

9' 10" x 9' 2" (3.00m x 2.79m)

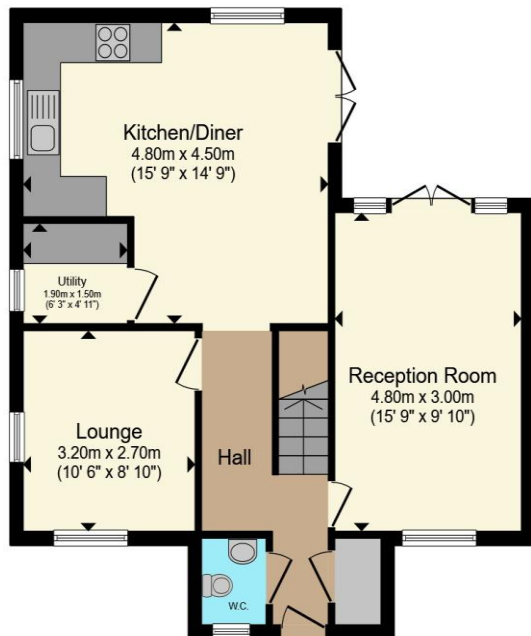
Bedroom 4

6' 11" x 6' 3" (2.11m x 1.91m)

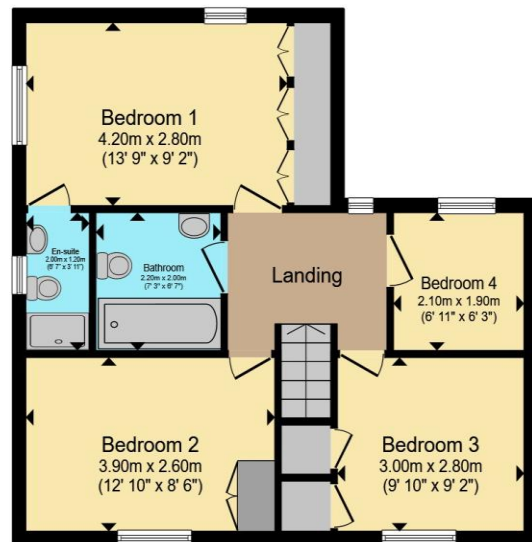
01656 657201

bridgend@peteralan.co.uk

Floorplan



Ground Floor



First Floor

Total floor area 108.0 m² (1,163 sq.ft.) approx

This floor plan is for illustrative purposes only. It is not drawn to scale. Any measurements, floor areas (including any total floor area), openings and orientation are approximate. No details are guaranteed, they cannot be relied upon for any purpose and they do not form part of any agreement. No liability is taken for any error, omission or misstatement. A party must rely upon its own inspection(s). Powered by www.propertybox.io

pa peter alan

Important Information

Note while we endeavour to make our sales details accurate and reliable, if there is any point which is of particular interest to you, please contact the office and we will be pleased to confirm the position for you. We have not personally tested any apparatus, equipment, fixtures, fittings or services and cannot verify they are in working order or fit for their purposes. Nothing in these particulars is intended to indicate that carpets or curtains, furnishings or fittings, electrical goods (whether wired or not). Gas fires or light fittings or any other fixtures not expressly included form part of the property offered for sale. This computer generated Floorplan, if applicable, is intended as a general guide to the layout and design of the property. It is not to scale and should not be relied upon for dimensions. Tenure: We cannot confirm the tenure of the property as we have not had access to the legal documents. The buyer is advised to obtain verification from their solicitor or surveyor.

Peter Alan Limited is registered in England and Wales under company number 2073153, Registered Office is Cumbria House, 16-20 Hockliffe Street, Leighton Buzzard, Bedfordshire, LU7 1GN. VAT Registration Number is 500 2481 05. For activities relating to regulated mortgages and non-investment insurance contracts, Peter Alan Limited is an appointed representative of Connells Limited which is authorised and regulated by the Financial Conduct Authority. Connells Limited's Financial Services Register number is 302221. Most buy-to-let

pa peter alan