



Wyvern Road, Ellesmere Port, CH65

£1,150 Per Month

Life at Glisk is all about balance, stylish, energy-efficient homes in a well-connected spot, where canal-side calm meets the buzz of Ellesmere Port. With 2, 3, and 4-bedroom homes to rent, Glisk is ideal for anyone looking to enjoy modern living on the edge of the Wirral Peninsula, just a short drive from Chester and Liverpool.

The Seven68 is a bright, open two-bedroom home designed for modern living, making the most of every inch of space.

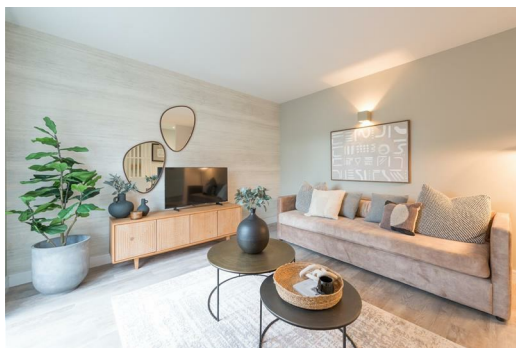
Downstairs, you'll find a stylish open-plan layout with a contemporary kitchen/diner at the front and a spacious living area at the rear, opening out onto the garden through full-height glass doors. Between the two sits the handy combined toilet and utility room designed to save space without compromising on convenience.

Upstairs, two generously sized bedrooms sit on either side of the home, separated by a sleek family bathroom. The main bedroom comes complete with a fitted wardrobe for easy storage.

With VELFAC windows to maximise natural light, a smart Wonderwall control panel, Sleestone worktops, and tech-friendly features like EV charging capacity and an iParcelBox, the Seven68 is a future-ready home that's stylish, practical, and comfortable.

Each home is designed with your lifestyle in mind, flexible layouts, spacious gardens, and smart tech that make day-to-day life easier. Whether it's retail therapy at Cheshire Oaks, dinner and drinks in town, or a quiet walk along the canal, you've got everything you need right on your doorstep.

And when it's time to get moving, Glisk makes it easy. With strong transport links across the North West and beyond, you're perfectly placed for commuting, weekends away, or visiting nearby cities. Modern living, made simple.





Energy Efficiency Rating		Environmental Impact (CO ₂) Rating	
Current	Potential	Current	Potential
100-109 A	92-100 A	100-109 A	100-109 A
81-100 B	74-91 B	81-100 B	81-100 B
62-80 C	55-73 C	62-80 C	62-80 C
43-61 D	36-54 D	43-61 D	43-61 D
24-42 E	17-35 E	24-42 E	24-42 E
5-23 F	8-16 F	5-23 F	5-23 F
1-4 G	1-7 G	1-4 G	1-4 G

Energy Efficiency Rating: 85 (Current), 96 (Potential)
 Environmental Impact (CO₂) Rating: B (Current), A (Potential)