



13 Grove Street, Harrogate

£189,950



**YOUR AWARD
WINNING AGENT**

#DARINGTOBEDIFFERENT



An attractive mid-terrace property offering well-presented accommodation arranged over three floors, ideally located close to excellent amenities within the popular Starbeck area of Harrogate. The property benefits from convenient access to a wide range of local shops, cafes and services, and is within walking distance of Starbeck railway station, providing easy access for commuters.

Offering flexible and well-proportioned living space, the property features two double bedrooms, a useful study area, spacious living accommodation and a low-maintenance paved courtyard garden with off-road parking to the rear. This is an ideal home for first-time buyers, professionals, or investors seeking a well-positioned property, with excellent local amenities and transport links nearby. [Edit](#) | [Delete](#)

OUTSIDE

To the rear of the property there is an attractive paved courtyard garden and space for off-road parking.

Council Tax band: A

Tenure: Freehold



GROUND FLOOR SITTING ROOM

A spacious reception room with window to the front.

KITCHEN

With space for a dining table. The kitchen comprises a range of fitted wall and base units with electric hob, oven, and space for appliances.

UTILITY

With space and plumbing for appliances.

FIRST FLOOR

STUDY AREA

A useful study area with ornamental fireplace.

BEDROOM 1

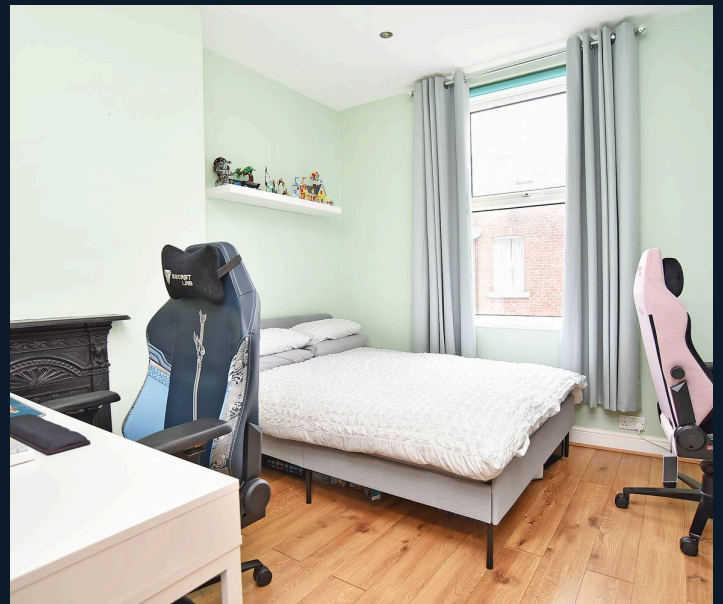
A double bedroom with window to the front and ornamental fireplace.

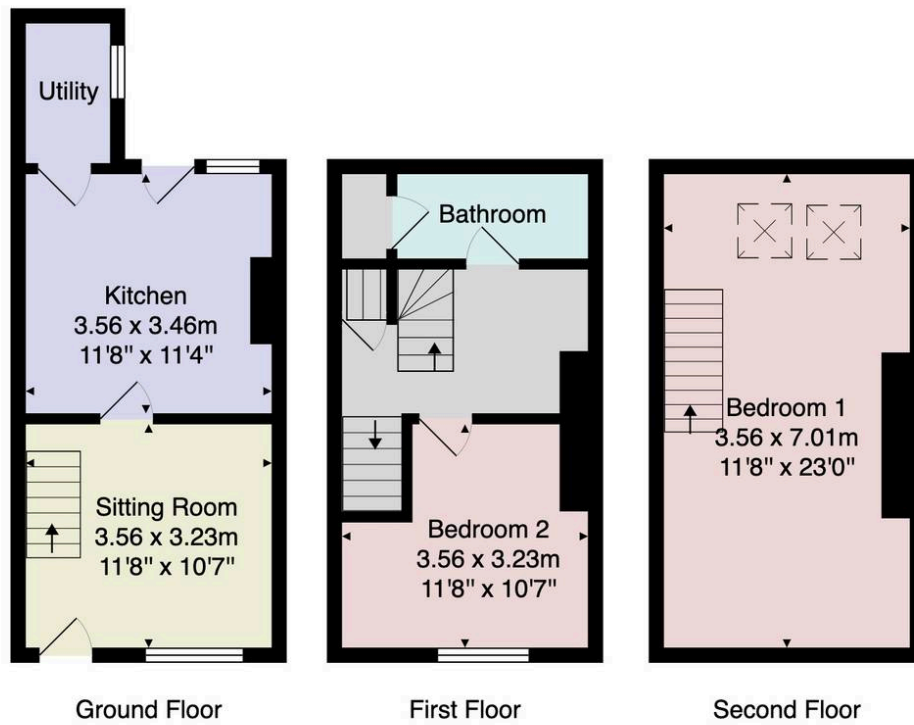
BATHROOM

A modern white suite comprising WC, washbasin set within a vanity unit, and shower. Heated towel rail. Fitted cupboard.

SECOND FLOOR BEDROOM 2

A further double bedroom with skylight window and space for storage.





Total Area: 75.8 m² ... 816 ft²

All measurements are approximate and for display purposes only.

No liability is accepted by either the agency or Box Property Solutions Ltd as to the exact measurements of the rooms.

Box Property Solutions Ltd retains the copyright on this plan and allows agents to use it with agreed permission.

