

CHARMILL

RESIDENTIAL

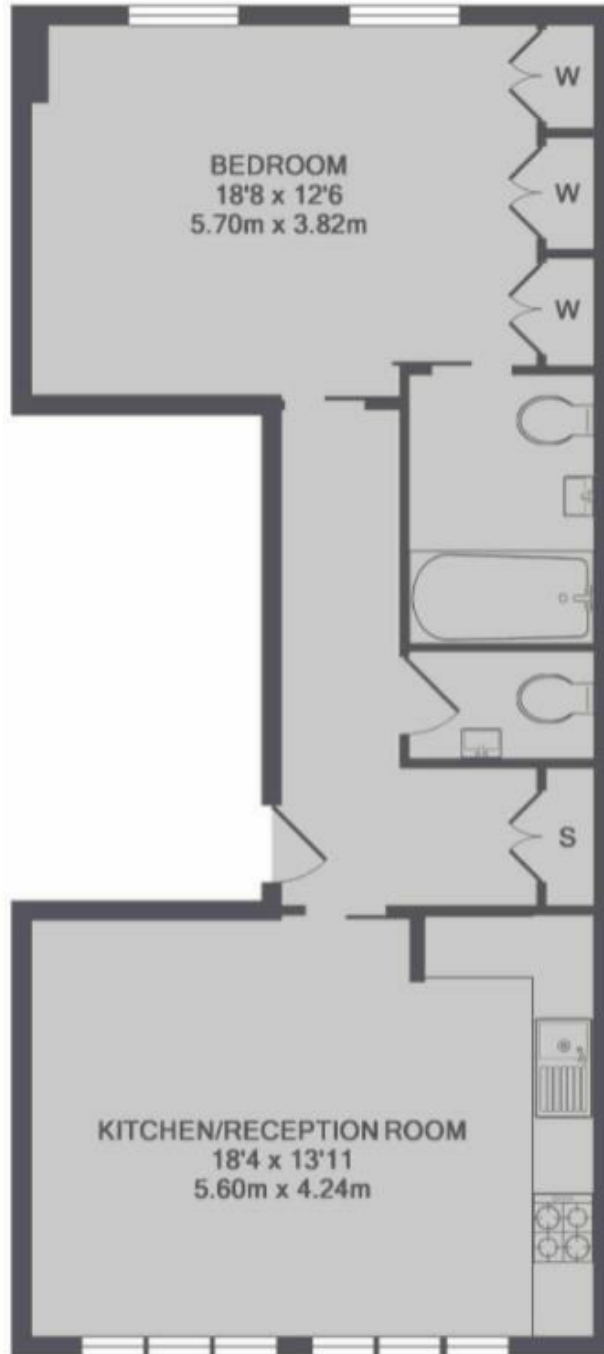


Great Titchfield Street, Fitzrovia WIW

A stunning architect-designed one bedroom apartment located in the heart of Fitzrovia. This second floor property comprises a large open plan fully fitted kitchen/reception room, a stylish bathroom suite, separate guest cloakroom and a double bedroom. Further benefits include underfloor heating, luxury stylish furnishings and fittings, reclaimed timber, Crittal windows and exposed brickwork. This apartment is in excellent decorative order. Great Titchfield Street is just 0.4 miles from both Great Portland Street (Hammersmith & City, Circle and Metropolitan lines) and Goodge Street (Northern Line).

- One bedroom
- Open plan kitchen/reception room
- Modern bathroom suite
- Separate guest cloakroom
- Furnished/unfurnished

£1,650



TOTAL APPROX. FLOOR AREA 668 SQ.FT. (62.1 SQ.M.)

Energy Efficiency Rating		Current	Potential
Very energy efficient - lower running costs			
(92 plus) A			
(81-91) B			
(69-80) C			
(55-68) D			
(39-54) E			
(21-38) F			
(1-20) G			
Not energy efficient - higher running costs			
England & Wales		76	77
		EU Directive 2002/91/EC	

Environmental Impact (CO ₂) Rating		Current	Potential
Very environmentally friendly - lower CO ₂ emissions			
(92 plus) A			
(81-91) B			
(69-80) C			
(55-68) D			
(39-54) E			
(21-38) F			
(1-20) G			
Not environmentally friendly - higher CO ₂ emissions			
England & Wales			
		EU Directive 2002/91/EC	

