



LOUISVILLE ROAD, SW17

£1,100,000

1546 Sqft

Heaver Estate

Private Garden

Two Bathrooms

Opposite Tooting Bec Common

Victorian Conversion

@marshandparsons
marshandparsons.co.uk

MARSH &
PARSONS

ABOUT THE PROPERTY

This stunning, two bedroom apartment is arranged on the lower and ground floors of a handsome Victorian conversion, on the highly sought-after Louisville Road. With approximately 1,546 sq ft of light-filled living space, the property features high ceilings, good proportions throughout and a landscaped private garden.

On the ground floor, you will find two double bedrooms and a family bathroom to the front of the property. To the rear is the extended open-plan kitchen/reception room, which boasts a large island, beautiful wooden floors, numerous lightwells which allow in an abundance of light, a mezzanine overlooking the lower ground floor and slim line bi fold doors, which lead to the private

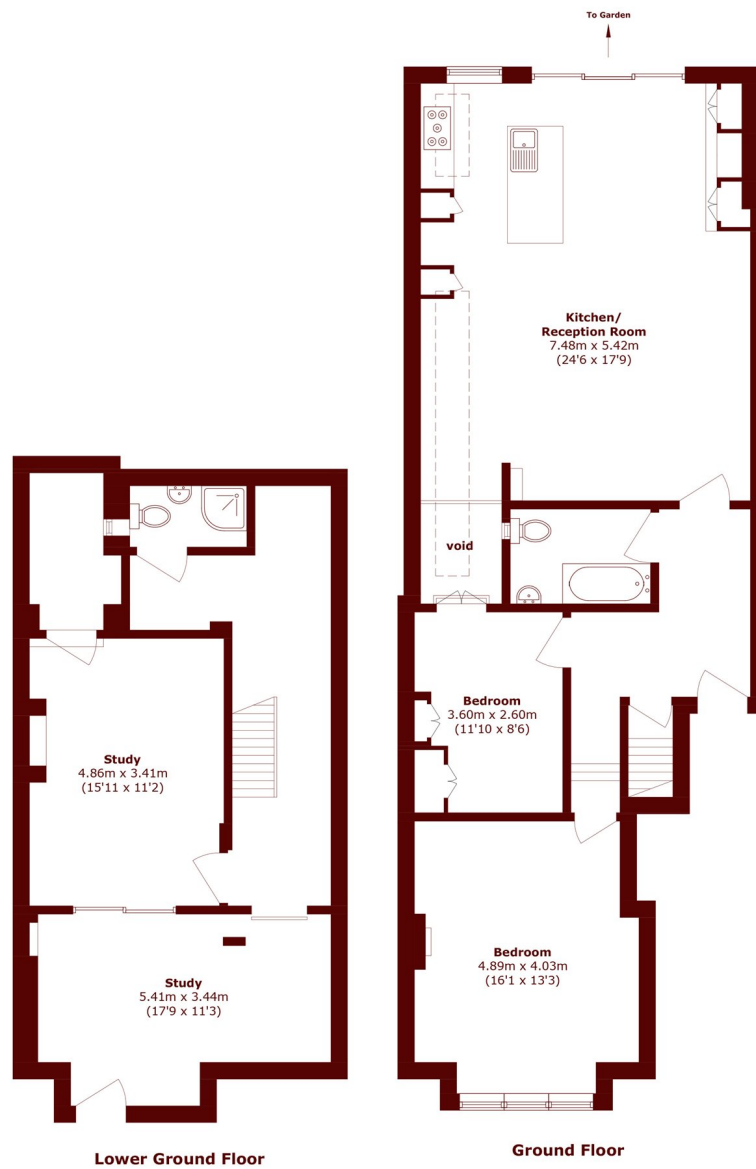








STEP INSIDE LOUISVILLE ROAD



Total area (approx.): 143.7 sq. m (1546.8 sq. ft)
(Excluding void)

Tooting
020 8767 3655

Energy Rating: We aim to make our particulars both accurate and reliable. However, they are not guaranteed; nor do they form part of an offer or contract. If you require clarification on any points then please contact us, especially if you're traveling some distance to view. Please note that appliances and heating systems have not been tested and therefore no warranties can be given as to their good working order

**MARSH &
PARSONS**