



Connells
01543 500 623
FOR SALE

Connells

Eagle Close
Walsall



Ground Floor

Entrance

Having a double glazed front entrance door, radiator, ceiling light point, stairs to first floor and door to living room

Living Room

Having a double glazed window to the front aspect, media wall, radiator, ceiling spotlights, carpeted flooring and access to the kitchen/diner

Kitchen/Diner

Being a fitted kitchen with a range of wall, base and drawer units with laminate work surfaces over and having a sink with drainer, integrated oven with induction hob and extractor hood over, plumbing for the dishwasher, space for appliances, tiled splash-backs, ceiling spotlights and ceiling light point, radiator, space for dining furniture, door to utility, double glazed window to the rear aspect and double doors to the conservatory

Utility

Having fitted base units, plumbing and space for appliances, part tiled walls, ceiling light point, laminate flooring, double glazed door to the rear garden and door to garage

Conservatory

Having double glazed window and doors to the rear garden, ceiling fan light and laminate flooring

First Floor

Landing

Having carpeted flooring, storage cupboard, ceiling light point, loft hatch and doors to bedrooms and bathroom

Bedroom 1

Having two double glazed windows to the front aspect, built in wardrobes, radiator, ceiling spotlights and carpeted flooring

Bedroom 2

Having a double glazed window to the rear aspect, radiator, ceiling light point and carpeted flooring

Bedroom 3

Having a double glazed window to the rear aspect, radiator, ceiling light point and carpeted flooring

Bathroom

Having a double glazed window to the side aspect, WC, wash hand basin, bath with shower over, part tiled walls, ceiling light point and vinyl flooring

Outside

Front

Having a brick paved driveway, laid to lawn, variety of shrubs and garage access

Rear

Having a paved patio area, raised laid to lawn and a variety of shrubs

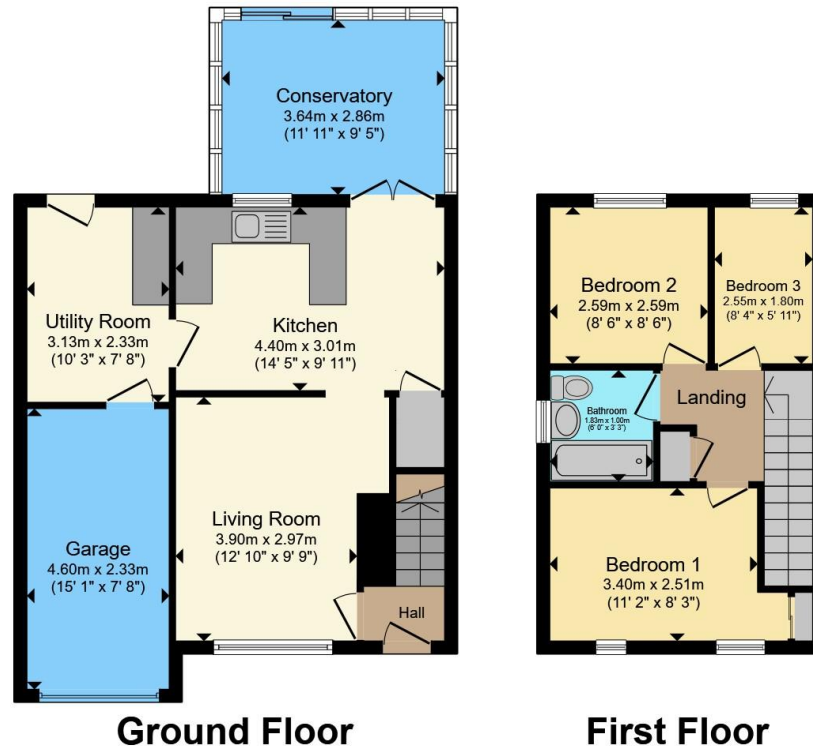
Garage

Having power, lighting and electric roller door









Total floor area 92.1 m² (991 sq.ft.) approx

This floor plan is for illustrative purposes only. It is not drawn to scale. Any measurements, floor areas (including any total floor area), openings and orientation are approximate. No details are guaranteed, they cannot be relied upon for any purpose and they do not form part of any agreement. No liability is taken for any error, omission or misstatement. A party must rely upon its own inspection(s). Powered by www.propertybox.io



To view this property please contact Connells on

T 01543 500923
E cannock@connells.co.uk

10-12 Wolverhampton Road
 CANNOCK WS11 1AH

EPC Rating: C Council Tax Band: B

Tenure: Freehold

view this property online connells.co.uk/Property/CNK108972



1. MONEY LAUNDERING REGULATIONS Intending purchasers will be asked to produce identification documentation at a later stage and we would ask for your co-operation in order that there will be no delay in agreeing the sale. 2. These particulars do not constitute part or all of an offer or contract. 3. The measurements indicated are supplied for guidance only and as such must be considered incorrect. Potential buyers are advised to recheck measurements before committing to any expense. 4. We have not tested any apparatus, equipment, fixtures, fittings or services and it is in the buyers interest to check the working condition of any appliances.

Connells Residential is registered in England and Wales under company number 1489613, Registered Office is Cumbria House, 16-20 Hockliffe Street, Leighton Buzzard, Bedfordshire, LU7 1GN. VAT Registration Number is 500 2481 05.

See all our properties at www.connells.co.uk | www.rightmove.co.uk | www.zoopla.co.uk

Property Ref: CNK108972 - 0002