



Albert Gate Court  
124 Knightsbridge, SW1X

CHESTERTONS





A newly refurbished four-bedroom lateral apartment spanning an impressive 2605 sqft. Impeccably finished throughout, it offers a luxurious standard of living, air conditioning throughout and the added convenience of a 24-hour porter.

- Turn key condition
- Dining Room
- Living Room
- 24 Hour Porter
- Lift
- A/C

**£52,000 pcm**

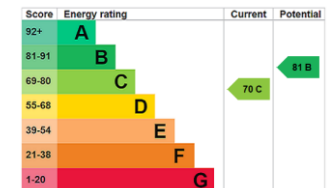
Additional tenant charges apply (fees apply to non-AST tenancies only)

Tenancy Agreement Fee: £300

References per Tenant/Guarantor: £60

Inventory check (approx. £100 – £250 inc. VAT)

[chestertons.co.uk/property-to-rent/applicable-fees](http://chestertons.co.uk/property-to-rent/applicable-fees)



**Minimum Term:** 1 month  
**Deposit Required:** 1 month  
**Local Authority:** Westminster  
**Council Tax Band:** H  
**EPC Rating:** C  
**Furnished**

*Chestertons Knightsbridge & Belgravia Lettings*

31 Lowndes Street

London

SW1X 9HX

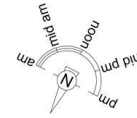
[knightsbridgelettingsusers@chestertons.co.uk](mailto:knightsbridgelettingsusers@chestertons.co.uk)

02072353530

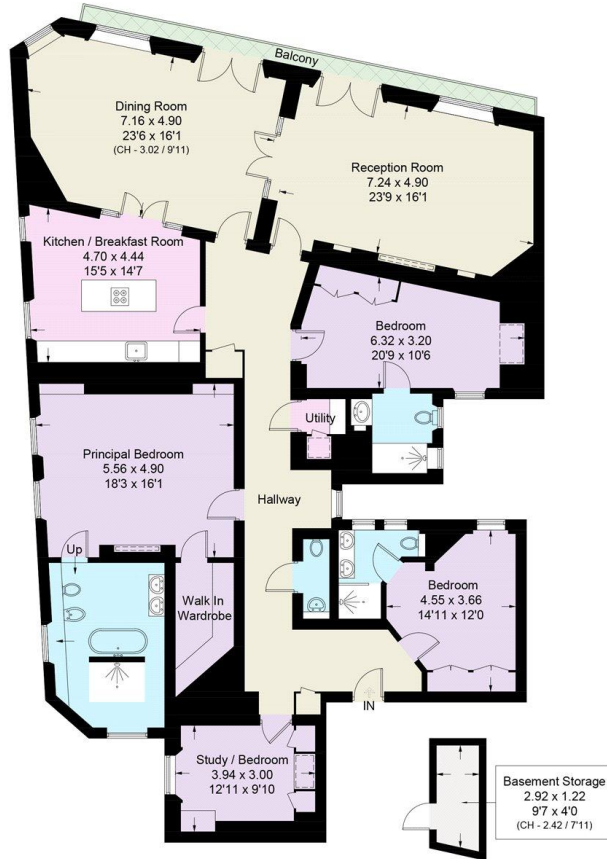
[chestertons.co.uk](http://chestertons.co.uk)

# Albert Gate Court, SW1X

Approximate Area = 2569 sq ft / 238.7 sq m  
 Basement Storage = 36 sq ft / 3.4 sq m  
 Total = 2605 sq ft / 242.1 sq m  
 Including Limited Use Area (41 sq ft / 3.8 sq m)



Reduced head height below 1.5m



(Not Shown In Actual Location / Orientation)

## Fifth Floor

This plan is for layout guidance only. Not drawn to scale unless stated. Windows and door openings are approximate. Whilst every care is taken in the preparation of this plan, please check all dimensions, shapes and compass bearings before making any decisions reliant upon them. (ID987990)

Chesterton UK Services Limited trading as Chestertons for themselves and for the vendor of this property whose agents they are, give notice that (i) these particulars do not constitute any part of an offer or contract, (ii) all statements contained within these particulars are made without responsibility on the part of Chestertons or the vendor, (iii) whilst made in good faith, none of the statements contained within these particulars are to be relied upon as a statement or representation of fact, (iv) any intending purchasers must satisfy themselves by inspection or otherwise as to the correctness of each of the statements contained within these particulars, (v) the vendor does not make or give either Chestertons or any person in their employment any authority to make or give representation or warranty whatsoever in relation to this property. Wide angle lenses may be used. ©Copyright Chestertons | Chesterton Global Ltd | Registered Office 5th Floor, The Lantern, 75 Hampstead Road, London, NW1 2PL Registered Company Number 05334580.

