



Living  
made  
better

Drift Court  
Gallion's Reach, E16 2FE



Offers In Excess Of £400,000

# Drift Court, Gallion's Reach, E16 2FE

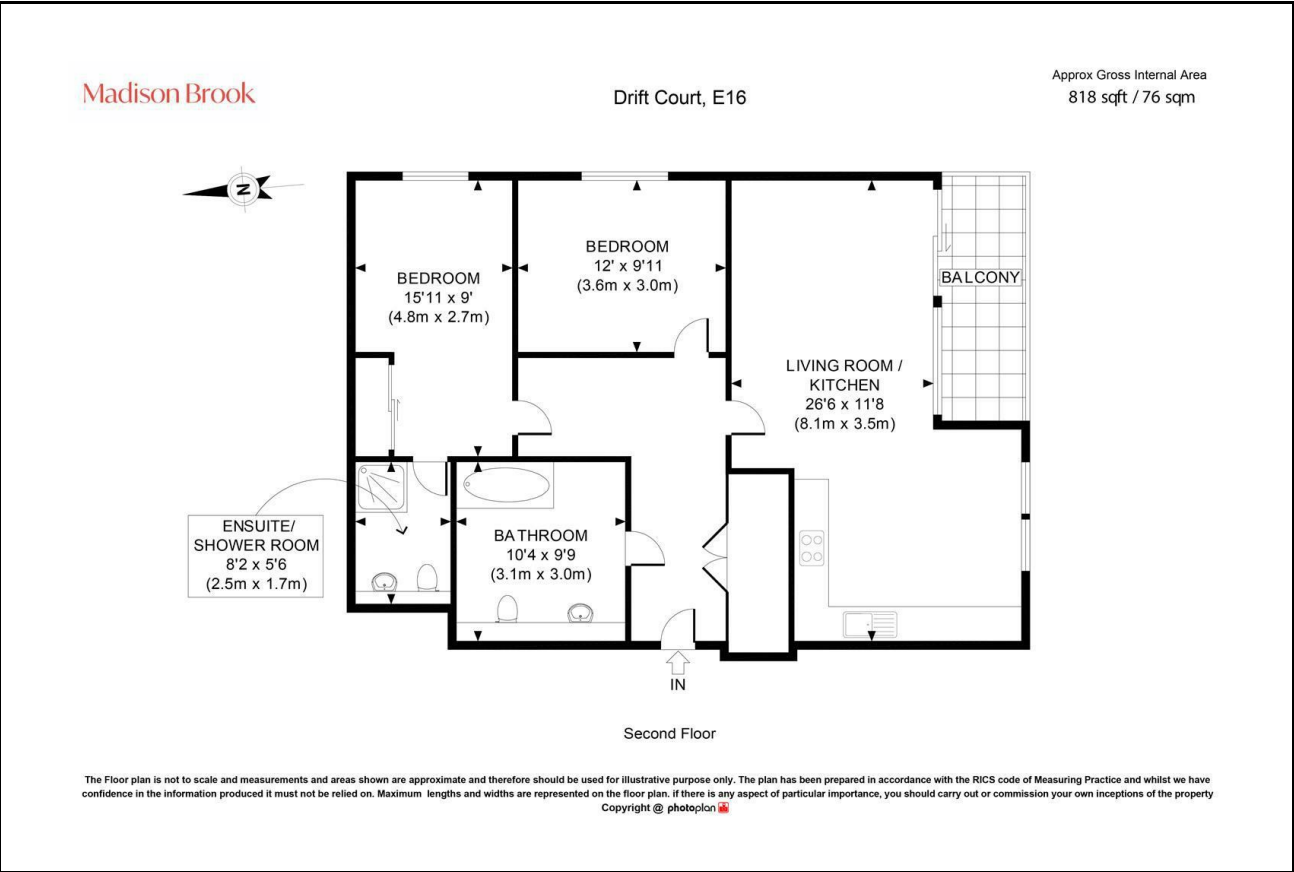
Madison Brook

## Property Summary

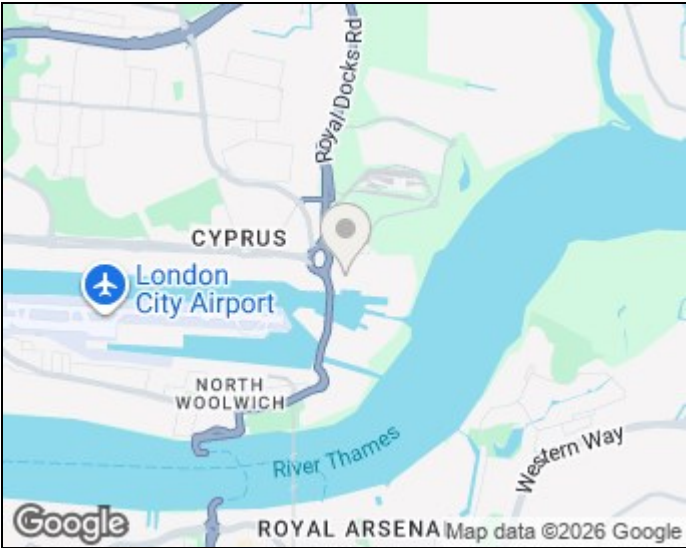
A well-presented two bedroom, two bathroom apartment set on the second floor of a modern riverside development in E16. The property offers generous open-plan living with a private balcony, secure gated parking and attractive river views, all conveniently located close to Gallions Reach DLR and local amenities.

Service charge: £4,000 pa | Ground rent: £813 pa | Lease: 178 years remaining

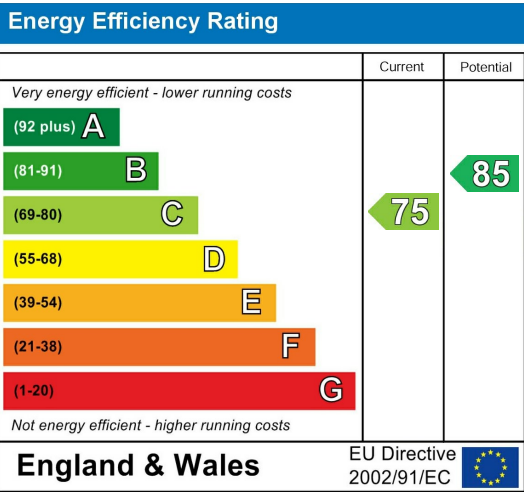
## Floorplan



## Area Map



## Energy Efficiency Graph



These particulars, whilst believed to be accurate are set out as a general outline only for guidance and do not constitute any part of an offer or contract. Intending purchasers should not rely on them as statements of representation of fact, but must satisfy themselves by inspection or otherwise as to their accuracy. No person in this firms employment has the authority to make or give any representation or warranty in respect of the property.

Unit B 20 Western Gateway, Royal Victoria  
Dock, London, E16 1BS  
Tel: 020 3946 6000 Email:  
docklands@madisonbrook.com  
<https://madisonbrook.com/>