

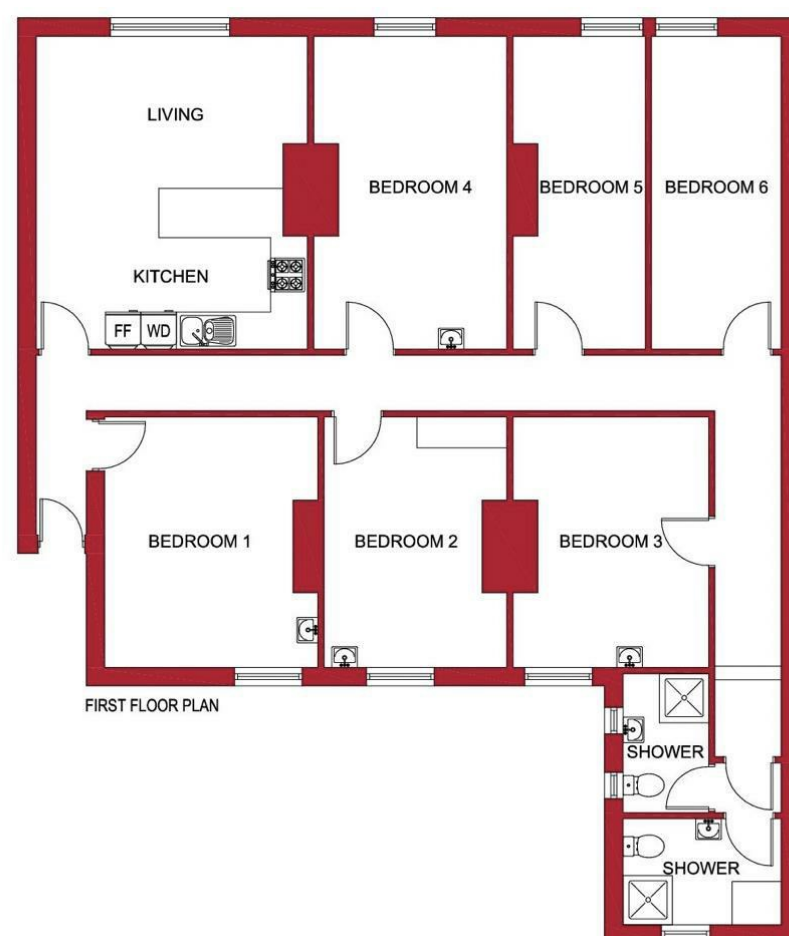
### Viewings

Viewings by arrangement only.  
Call 0114 2666300 to make an appointment.

### Vendors Comments

Add text here

Energy Efficiency Rating		
	Current	Potential
Very energy efficient - lower running costs		
(92 plus) <b>A</b>		
(81-91) <b>B</b>		
(69-80) <b>C</b>		
(55-68) <b>D</b>		
(39-54) <b>E</b>		
(21-38) <b>F</b>		
(1-20) <b>G</b>		
Not energy efficient - higher running costs		
<b>England &amp; Wales</b>	EU Directive 2002/91/EC	

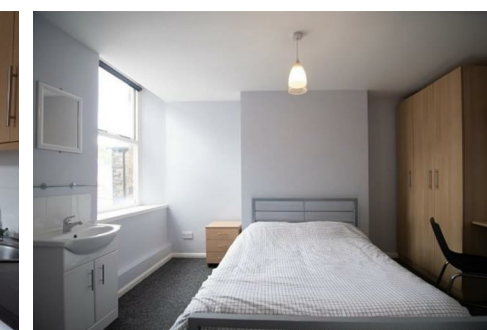
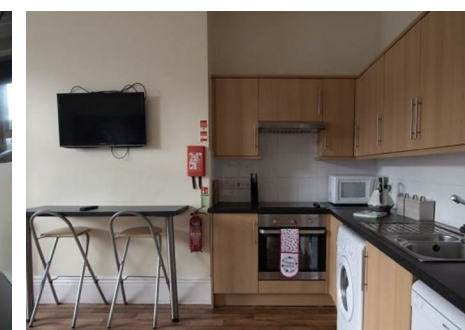
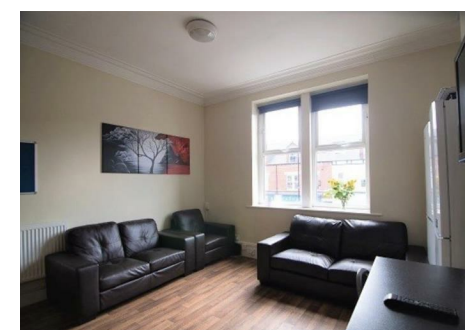
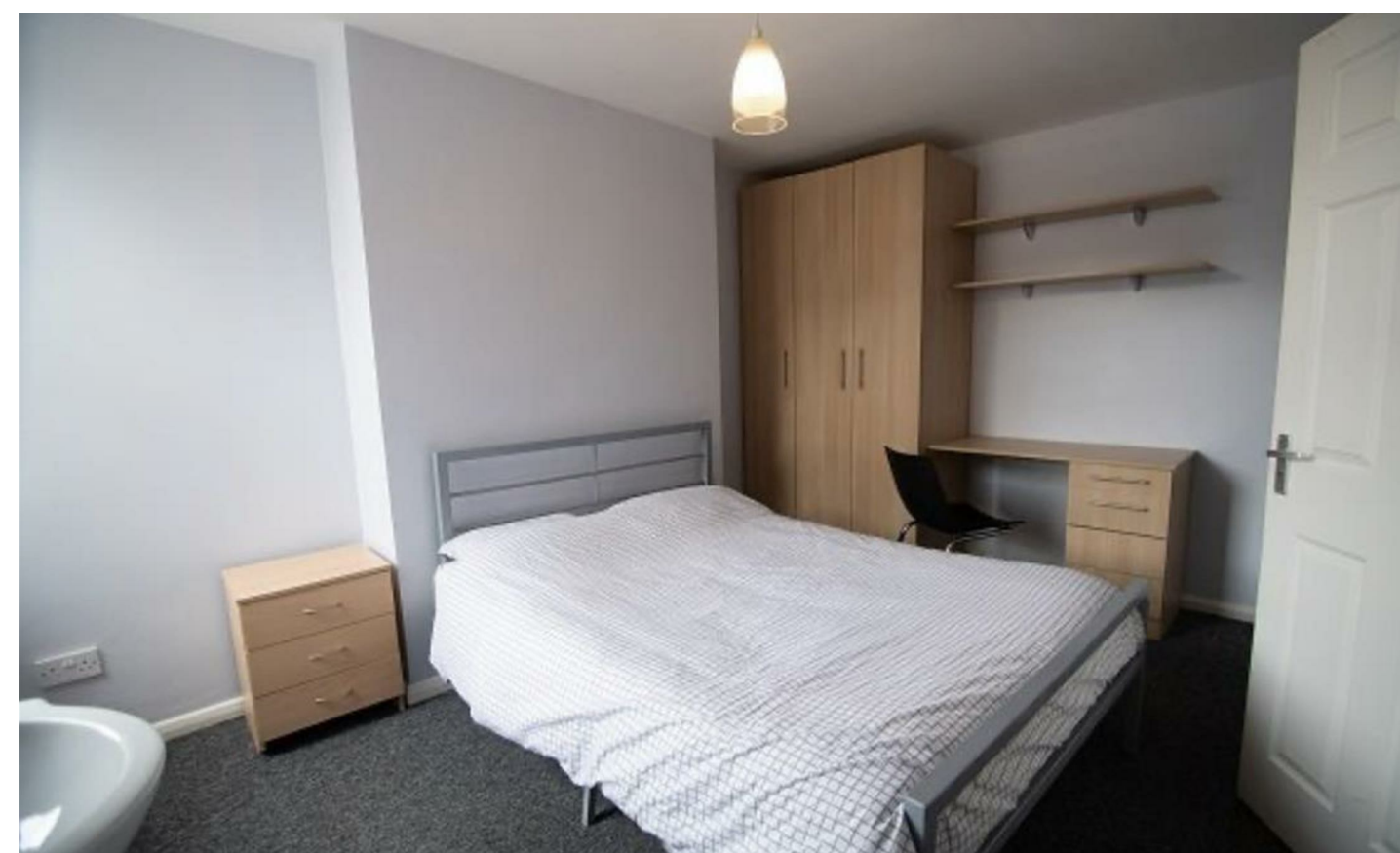


**JC SALES & LETTINGS**

Tel: 0114 483 0038

E-mail: [sales@jc-salesandlettings.com](mailto:sales@jc-salesandlettings.com)

Website: [www.jc-salesandlettings.com](http://www.jc-salesandlettings.com)



**Room 4, 294A Ecclesall Road, Sheffield, S11 8PE**

**£502 Per month**

- £110 per week to include all bills
- Shared six bedroom property
- Excellent location on Ecclesall Road
- Ideal for students studying at Sheffield Hallam University
- Large double room available
- Two bathrooms
- Close to an abundance of local amenities
- EPC Grade C



# Room 4, 294A Ecclesall Road, Sheffield S11 8PE

\*\*\* STUDENT \*\*\* £110 PER WEEK, TO INCLUDE ALL BILLS \*\*\*  
LARGE DOUBLE BEDROOM in a SHARED, six bedroom property available to STUDENTS, with TWO BATHROOMS.  
A VERY WELL LOCATED, six bedroom APARTMENT close to an abundance of local amenities and situated in the  
HIGHLY SOUGHT AFTER location off ECCLESALL ROAD.  
In brief the accommodation comprises: open plan lounge / kitchen, large double bedroom and two bathrooms. An  
early viewing is highly recommended to avoid disappointment!  
EPC Grade C.



Council Tax Band: B

