



Harvist Road  
NW6

---

FOR SALE  
FREEHOLD

---

£2,599,950

---

For Sale and offered CHAIN FREE is this beautifully presented four-bedroom, two-bathroom family home offering an exceptional blend of style, space and modern living, ideally located close to Queen's Park itself and a wide range of local amenities.

---







This elegant property has been thoughtfully designed for contemporary family life and is finished to a high standard throughout. Stylish wood flooring runs across the principal living spaces, enhancing the sense of warmth and quality while creating a seamless flow between rooms.

The property offers a south-facing reception room with impressive 28ft bay windows, a feature fireplace, wooden flooring, and high quality fitted units. At the heart of the home is a well-appointed kitchen and dining area, designed to combine practicality with style. Large doors open directly onto the impressive 69ft private rear garden. This beautifully proportioned outdoor area is ideal for summer entertaining, outdoor dining or simply enjoying a peaceful retreat in the heart of



Decorative wall with a repeating leaf pattern in black and white.

Open shelving unit containing books and a box labeled "Boudoir".

Modern bedside lamp with a conical shade.

Modern bedside lamp with a conical shade.

White, ribbed pendant light fixture.

Large window with white shutters and a white bench underneath.

White radiator located under the window.

Light green wardrobe with sliding doors.

Light green wardrobe with sliding doors.

Light-colored wooden floor.

the home. A guest W/C is also situated on this floor.

The First Floor is equally as impressive as the Ground Floor, four well-proportioned bedrooms provide flexible accommodation for growing families or those seeking additional workspace. The principal bedroom is complemented by an en-suite bathroom, while a modern family bathroom serves the remaining bedrooms. Further benefits include double glazing throughout and there is residents' permit parking.

Viewing highly recommended.





- Extended Victorian terraced house.
- Beautifully presented throughout with high-quality finishes
- Comprises of 4 bedrooms, 1 reception and 2 bathrooms.
- Principal bedroom with dressing area and five-piece ensuite including his and hers sinks
- 67ft secluded garden situated to the rear.
- Chain free property with double glazing throughout
- South-facing reception room with impressive 28ft bay windows and feature fireplace
- Modern kitchen and dining area with direct access to the garden
- Viewing highly recommended
- Council Tax (Brent) - E







# HARVIST ROAD

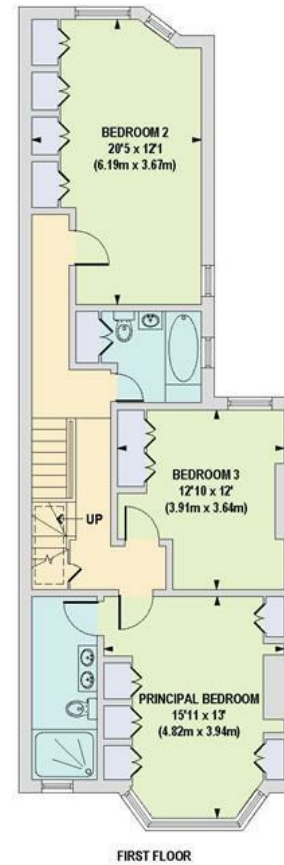
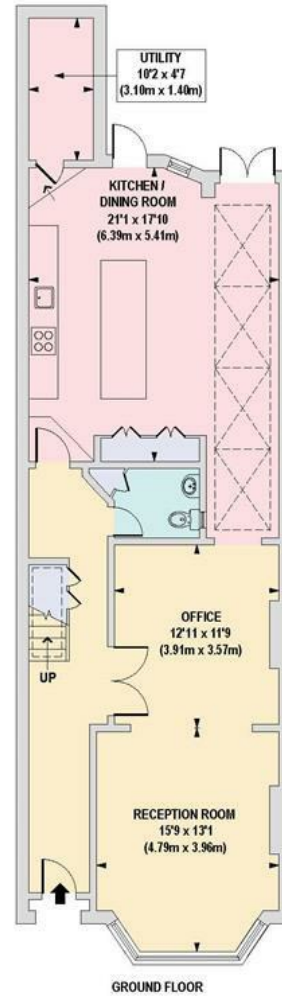
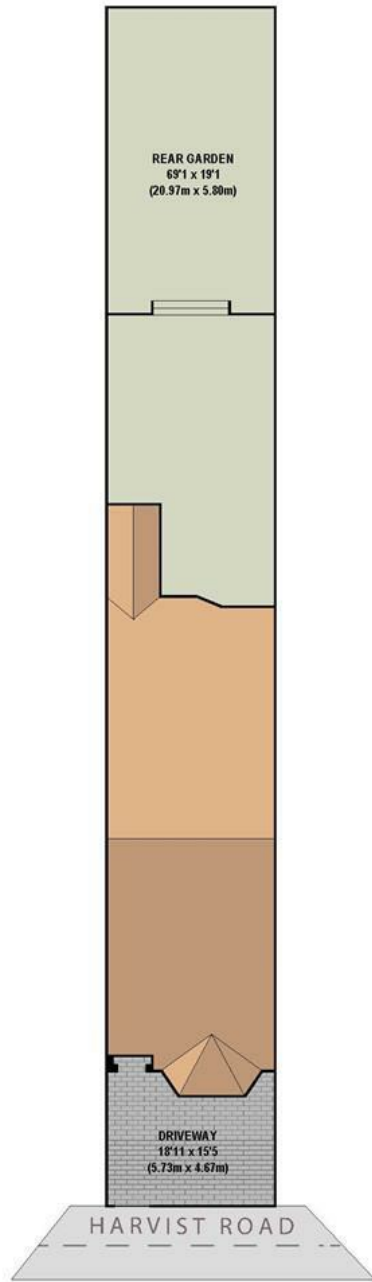
London - NW6



Approximate Gross Internal Floor Area

2173 sq. ft / 201.89 sq. m (Including Restricted Height Area & Eaves)

2054 sq. ft / 190.86 sq. m (Excluding Restricted Height Area & Eaves)



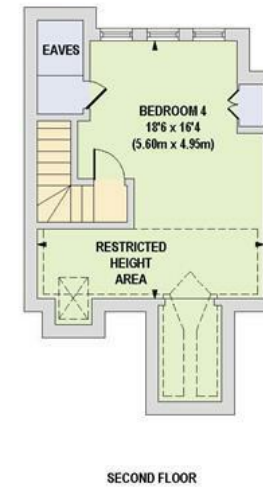
Approx 2054.00

sq ft

EPC: D

Brent (E)

Ref: 19682120



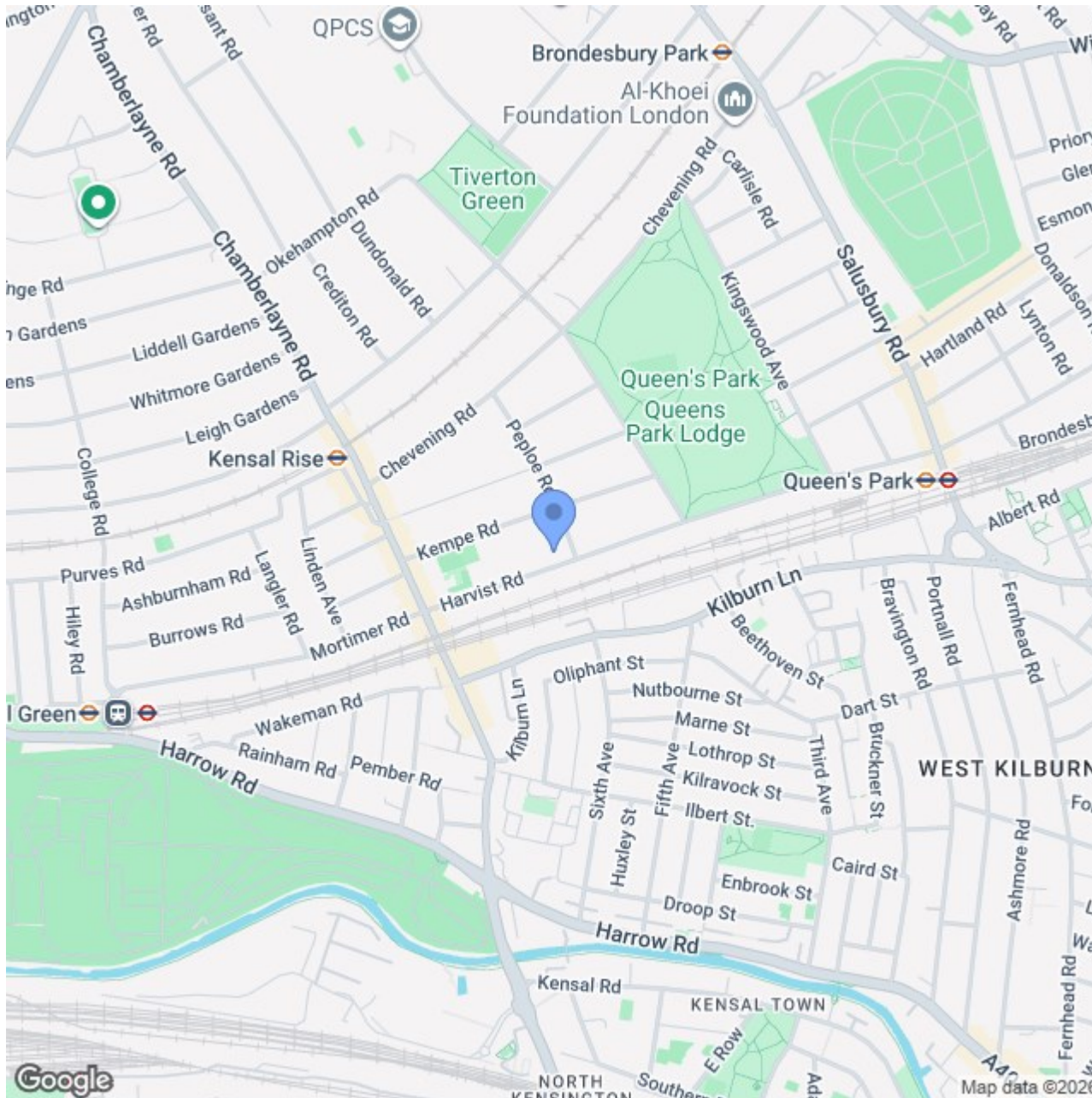
Floorplan is for illustrative purposes only and is not to scale. Every attempt has been made to ensure the accuracy of the floor plan shown, however all measurements, fixtures, fittings and data shown are an approximate interpretation for illustrative purposes only. Liability for errors, omissions or mis-statement through negligence or otherwise is hereby excluded.

# Location

---

Harvist Road is a popular road within the highly sought-after Queen's Park/Kensal Rise area and is within walking distance of the fashionable bars, gastropubs, and independent shops of Chamberlayne Road & Salusbury Road. Excellent transport links are also available via Queen's Park (Bakerloo & Lioness Line- Zone 2) and Kensal Rise station (Mildmay- Zone 2). The award-winning Queens Park is a short walk away to be able to stroll through and enjoy the many activities that go on within the park. The popular Lexi Arthouse Cinema is also within easy reach.

---



020 7328 2828 \* 020 8459 1133 – Sales

020 8450 9377 – Lettings

enquiries@cameronsstiff.co.uk

cameronsstiff.co.uk

**CAMERONS STIFF & Co.**  
EST. 1982



These particulars are a guide, not an offer contract. Property descriptions, photographs and floor plans are not taken as statements or representations of fact. Although every effort has been taken to ensure measurements, provided are as accurate as possible, they are to be assumed approximate and not to scale. Prospective purchasers must verify the accuracy of the information provided here through private means. Camerons Stiff & Co. does not give any representations or warranties, nor does Camerons Stiff & Co. represent the vendor legally. Camerons Stiff & Co. assume no liability, for any costs, losses or expenses incurred by the vendor or a prospective purchaser relating to any transaction regarding this property.

©Camerons Stiff & Co. 2025 All rights reserved.

