



**White Lodge Close, TW7**

**£699,950**

**Dexters**



## White Lodge Close, TW7

Located in a quiet crescent within one of Isleworth's most sought after private modern developments, is this well presented four bedroom town house. The property is situated just few hundred yards from the River Thames and Old Isleworth with its pubs, shops and cafes.

This spacious family home offers fantastic living accommodation split over three floors and has the added benefit of an integral garage and off-street parking. The ground floor welcomes you with an inviting entrance hall which leads onto a practical utility room and a downstairs shower room. On this floor, you will also find a spacious double bedroom and a conservatory overlooking the garden.

Upstairs on the first floor, there is a large reception room at the front, a separate dining room and kitchen to the rear, as well as shower room. The master bedroom with integrated wardrobes and a dedicated en suite shower room is located on the top floor, where you will also find two further double bedrooms and a modern family bathroom.

White Lodge Close is a popular development within 0.8 miles of Syon Lane Station and within easy reach of Isleworth Station with its service into London Waterloo. The River Thames is 0.6 miles away and Syon Park is 1.1 miles away.

### Features

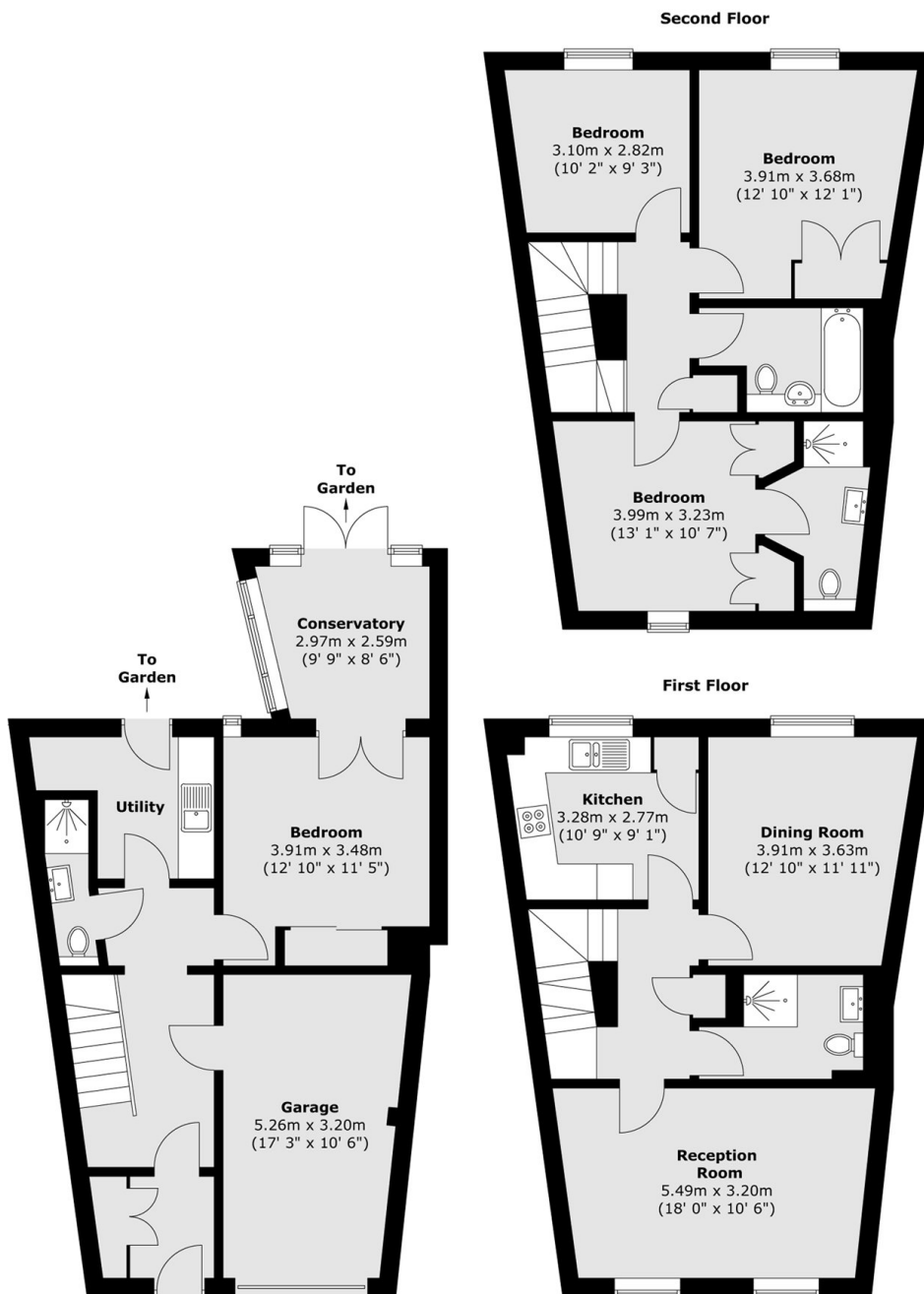
- Town House
- Four Bedrooms
- Well-Presented Throughout
- Off-Street Parking
- Garage
- Private Garden







# White Lodge Close, Old Isleworth, TW7



Total area (approx.) : 168.3 sq. m (1811 sq. ft)