



Harmood House

Harmood Street, NW1

Asking Price £435,000

A well-presented and naturally bright two-bedroom duplex apartment in a well-maintained development. It boasts a good layout, pleasant aspect and measures 695 sq. ft. Harmood Street is a quiet location and light on traffic. The surrounding area offers excellent amenities.

CHESTERTONS



Harmood House

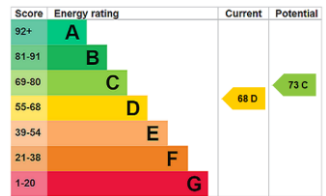
Harmood Street, NW1

- Well-presented
- Naturally bright
- Two bedrooms
- Good sized kitchen
- Close to shops and good transport links
- Lovely aspect



Harmood house is located on a quiet residential street just moments from Camden High Street and Camden Market and enjoys a real community feel due to the horseshoe shape of the block and gated area. Primrose Hill and Hampstead Heath are easily accessible, with Kentish Town West Overground Station, Chalk Farm and Camden Town Tube Stations (Northern Line) close by.

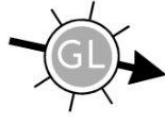
Tenure: Leasehold with 97 years remaining
Service Charge: £1,527 per annum
Ground Rent: £10 per annum
Local Authority: Camden
Council Tax Band: B



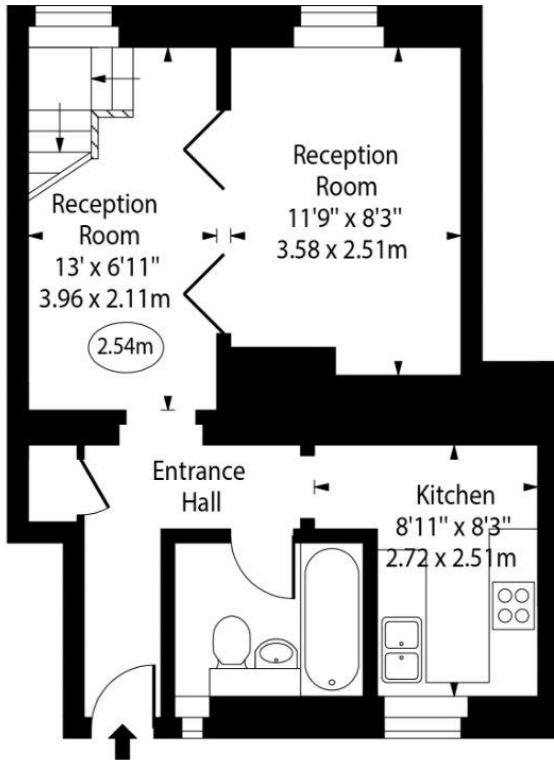
Chestertons Camden & Kentish Town Sales

99-101 Parkway
 Camden
 London
 NW1 7PP
 camden@chestertons.co.uk
 020 7267 2053
 chestertons.co.uk

Harmood House

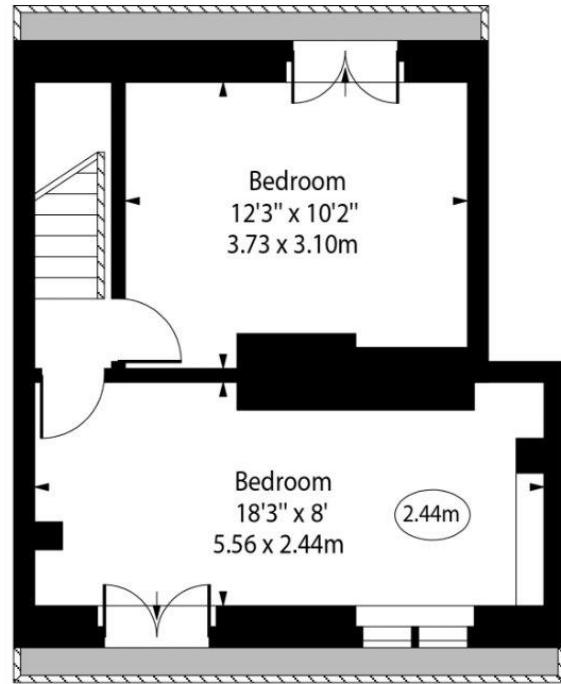


○ - Ceiling Height



Third Floor

Gross Internal Area - 375 Sq Ft - 34.84 Sq M



Fourth Floor

Gross Internal Area - 320 Sq Ft - 29.73 Sq M

Approx Gross Internal Area 695 Sq Ft - 64.57 Sq M

Every attempt has been made to ensure the accuracy of the floor plan shown. However, all measurements, fixtures, fittings, and data shown are approximate interpretations and for illustrative purposes only. Measured according to the RICS. Not To Scale.

www.goldlens.co.uk

Ref. No. 032107E

