

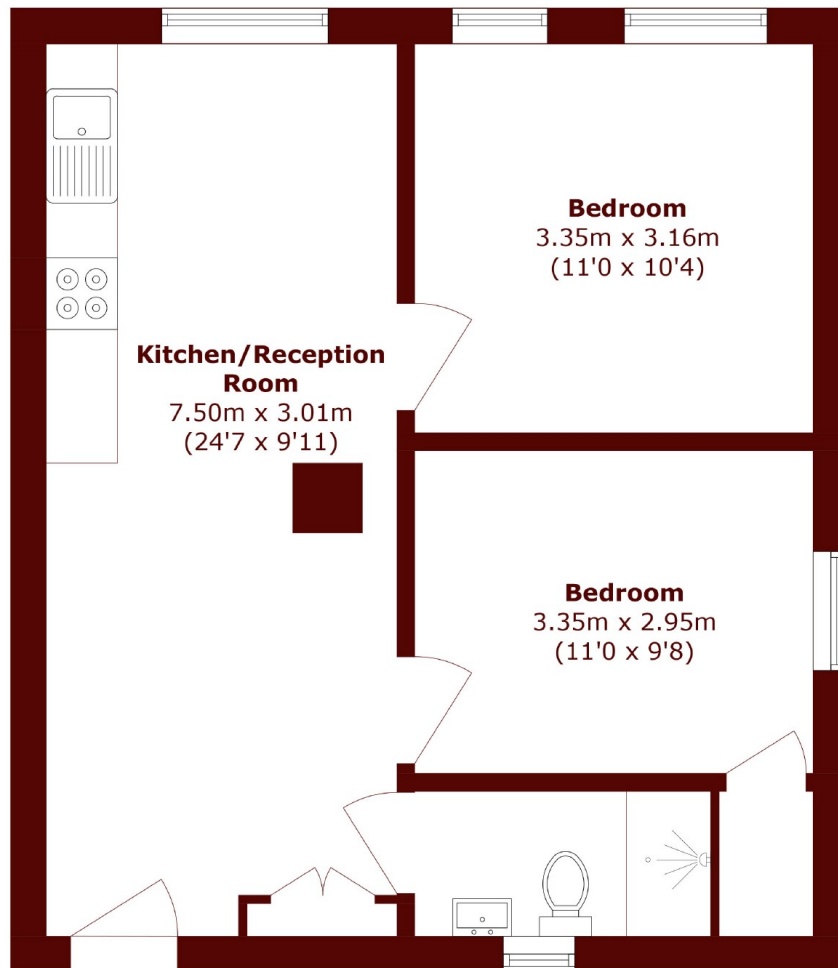


Flower Court, W1W

£700,000

 2  1  1  B

- Open Plan Living
- Long Lease
- Excellent Location
- Great Portland Street
- One/Two Double Bedrooms
- Well Maintained Block



Total area (approx.): 48.3 sq. m (519.9 sq. ft)

Marsh & Parsons Marylebone & Mayfair

94 Baker Street, London,
W1U 6FZ
020 7935 1775