



CLEVELAND GARDENS, SW13

£1,875,000

Four bedrooms
Open plan living
Garage
South west facing garden
Off street parking
Central village location

@marshandparsons
marshandparsons.co.uk

MARSH &
PARSONS

ABOUT THE PROPERTY

This exceptional, light-filled home has been finished to a high standard throughout. The ground floor opens to a spacious hallway with access to the integral garage (or potential playroom). A large open-plan kitchen/living space features solid wood floors, Velux windows, and French doors to the garden. The fully fitted kitchen offers ample storage, while the living area accommodates both a dining table and seating area. A guest WC completes the ground floor.

Cleveland Gardens is a prime Barnes location, close to the High Street, duck pond, and River Thames. Top Schools including St Paul's, The Harrodian, and the Swedish School are nearby.









STEP INSIDE CLEVELAND GARDENS

Cleveland Gardens, SW13

APPROX. GROSS INTERNAL FLOOR AREA 1911 SQFT / 177.53 SQM
(Including Garage)

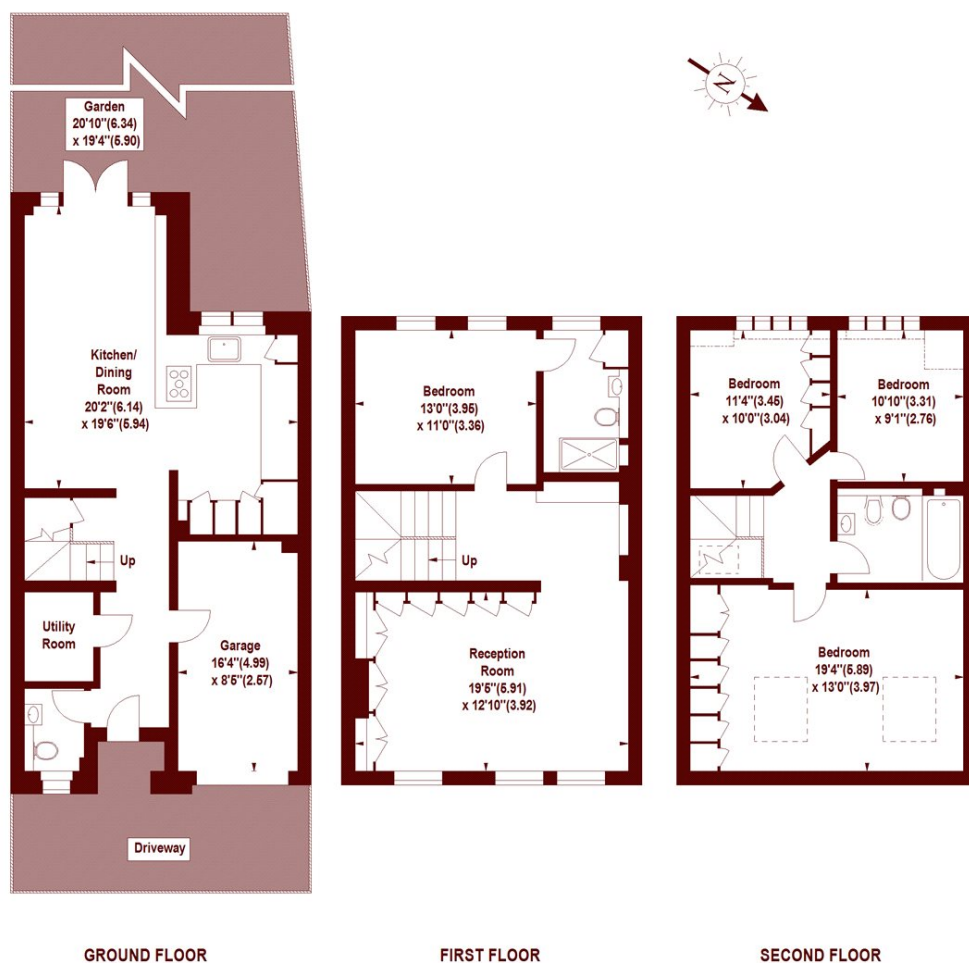


Illustration For Identification Purposes Only. Not To Scale
*Floorplan Drawn According To RICS Guidelines
Copyright of FeaturePRO

Barnes & East Sheen
020 8563 8333

Energy Rating: C We aim to make our particulars both accurate and reliable. However, they are not guaranteed; nor do they form part of an offer or contract. If you require clarification on any points then please contact us, especially if you're traveling some distance to view. Please note that appliances and heating systems have not been tested and therefore no warranties can be given as to their good working order

MARSH &
PARSONS