



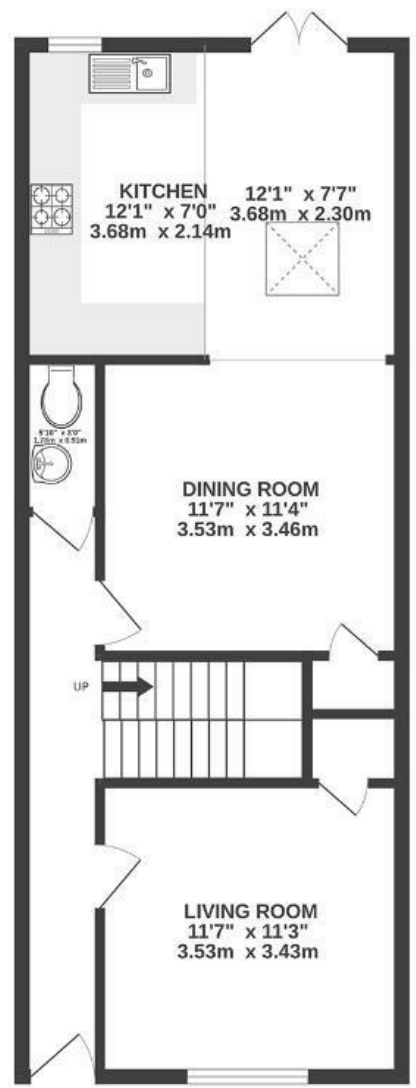
# Albert Park Place

## MONTPELIER

APPROXIMATE FLOOR AREA  
99 SQM / 1062 SQFT



GROUND FLOOR  
576 sq.ft. (53.5 sq.m.) approx.



1ST FLOOR  
486 sq.ft. (45.1 sq.m.) approx.



Boardwalk

# Albert Park

, BRISTOL



£500,000



3 Bedrooms



BS6 5ND



1 Bathrooms

*"It's wonderful having lots of wildlife around and such kind neighbours. The Cadbury pub is great for a drink and a Sunday Roast. The Thali Cafe is great too. I have lots of happy memories of having friends round for barbecues in the summer. There are also a couple of really good corner shops close by. There's always something going on. The Star and Garter is legendary, and just around the corner."*

