






MALLINSON
& CO

INNOVATIVE PROPERTY EXPERTS

Ingbirchworth Road, Thurlstone, Sheffield, S36 9QN

Offers Over £325,000

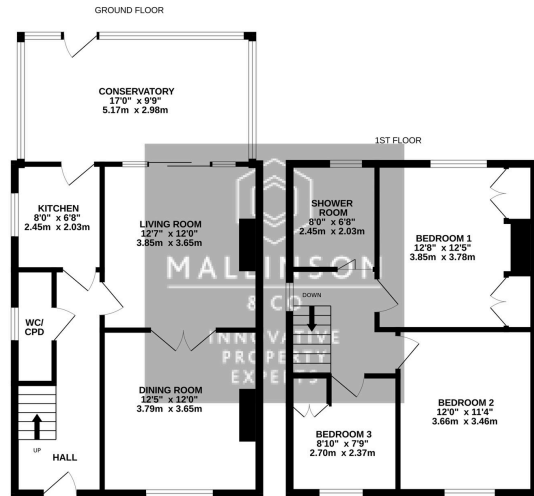
 3  1  2



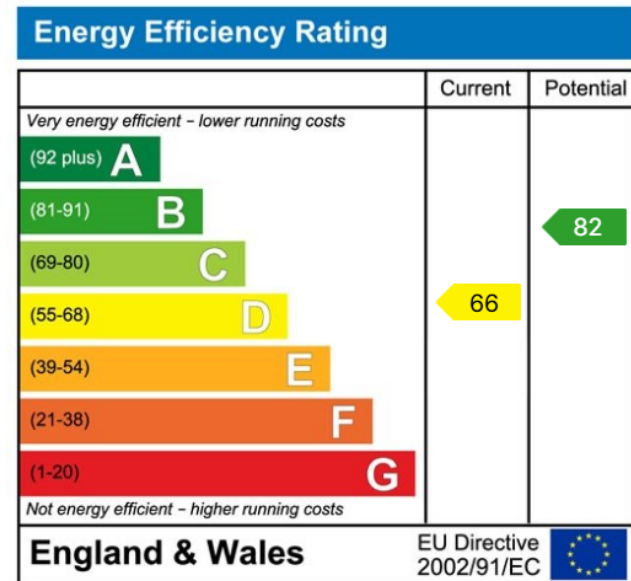
- STONE BUILT SEMI DETACHED
- WEALTH OF CHARM & CHARACTER
- 2 RECEPTION ROOMS
- DRIVEWAY PROVIDING OFF STREET PARKING
- SEMI RURAL LOCATION WITH PANORAMIC VIEWS
- 3 BEDROOMS
- MANY ORIGINAL FEATURES
- KITCHEN & CONSERVATORY/UTILITY EXTENSION
- GARDENS TO FRONT & REAR
- CLOSE TO LOCAL AMENITIES, SCHOOLING & TRANSPORT LINKS



A TRUE RARITY TO MARKET ... NESTLED WITHIN AN IDYLIC AND SECLUDED RURAL SETTING, PROVIDENCE HOUSE IS A BEAUTIFULLY APPOINTED STONE-BUILT THREE-BEDROOM SEMI-DETACHED HOME, OFFERING A RARE OPPORTUNITY TO ACQUIRE A CHARACTERFUL PROPERTY SURROUNDED BY GLORIOUS OPEN COUNTRYSIDE. RETAINING A WEALTH OF ORIGINAL FEATURES THROUGHOUT, THIS DECEPTIVELY SPACIOUS HOME ENJOYS OUTSTANDING PANORAMIC VIEWS, AMPLE OFF-STREET PARKING, WONDERFUL STONE OUTBUILDINGS AND ENCHANTING COTTAGE-STYLE GARDENS. IDEALLY SUITED TO THE COUPLE OR FAMILY PURCHASER, THE PROPERTY ENJOYS A PEACEFUL SETTING WHILST REMAINING WITHIN WALKING DISTANCE OF THE VILLAGE SCHOOL AND LOCAL COUNTRYSIDE WALKS.



TOTAL FLOOR AREA: 1089 sq ft (101.2 sq m) approx.
While every effort has been made to ensure the accuracy of the figures contained herein, measurements of doors, windows, rooms and any other items are approximate and no responsibility is taken for any error, omission or mis-statement. The client should always measure and verify the details to suit their own requirements. The services provided are for information only and do not constitute an offer of any financial product. The services provided are for information only and do not constitute an offer of any financial product. The services provided are for information only and do not constitute an offer of any financial product.



INNOVATIVE
PROPERTY
EXPERTS

Mallinson & Co

Office: 01226 414 150

Email: ben@mallinsonandco.co.uk

Web: www.mallinsonandco.co.uk

Suite 6, Penistone 1, St. Mary's Street, Penistone, S36 6DT