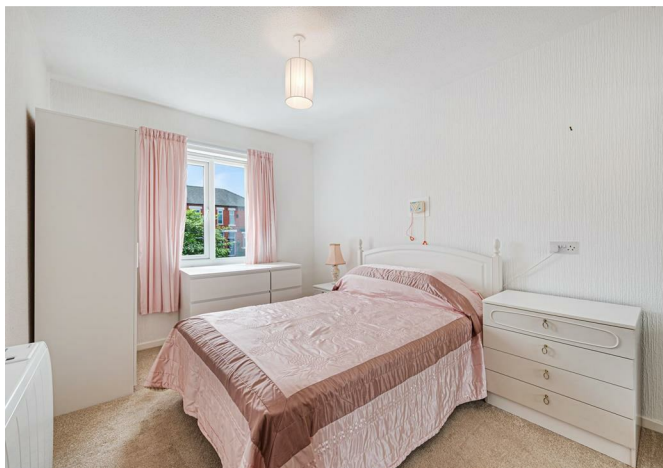




20 Oulton Court, Grappenhall, Warrington, WA4 2NT

£85,000



20 Oulton Court, Grappenhall, Warrington, WA4 2NT

£85,000

A GREAT RETIREMENT APARTMENT SITUATED WHERE YOU CAN WATCH THE WORLD GO BY IN THIS FABULOUS FRIENDLY DEVELOPMENT. Communal entertaining areas with kitchen, wc and laundry room. Private hallway with useful cupboard, great sized living room with feature fireplace and views to the front of the building. Modern fitted kitchen, double bedroom with fitted wardrobe and modern shower room.

Description

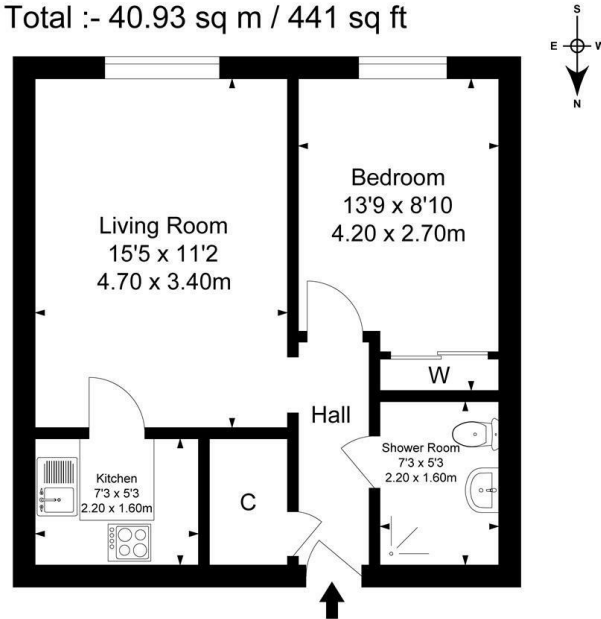


Council Tax Band: B

Floor Plans

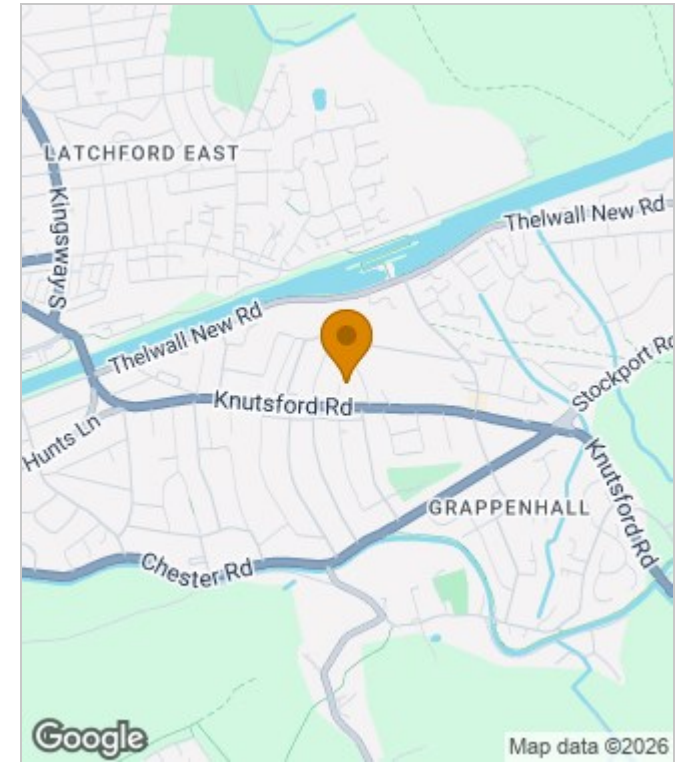
Oulton Court, Grappenhall

Approximate Gross Internal Area :-
Total :- 40.93 sq m / 441 sq ft

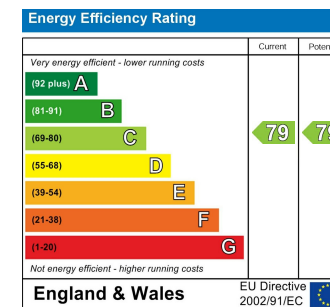


Surveyed and drawn by Lens Media for illustrative purposes only. Not to scale. Whilst every attempt was made to ensure the accuracy of the floor plan, all measurements are approximate and no responsibility is taken for any error.

Area Map



Energy Performance Graph



These particulars, whilst believed to be accurate are set out as a general outline only for guidance and do not constitute any part of an offer or contract. Intending purchasers should not rely on them as statements of representation of fact, but must satisfy themselves by inspection or otherwise as to their accuracy. No person in this firm's employment has the authority to make or give any representation or warranty in respect of the property.