



Silbury Boulevard, Milton Keynes, MK9 1LT

welcome to

Silbury Boulevard, Milton Keynes

Located in the heart of Central Milton Keynes, this modern, one-bedroom apartment on Silbury Boulevard offers contemporary city living just moments from the centre:mk shopping centre, restaurants, and transport links.

Entrance Hall

2 storage cupboards, double-glazed windows to the side and doors to the open-plan lounge/kitchen/diner, bedroom and bathroom.

Lounge / Kitchen

15' 4" x 15' 3" (4.67m x 4.65m)

Lounge area - Double-glazed window and double-glazed door opening onto a Juliet style balcony.

Kitchen area - Fitted with a mix of wall and base units with work surface over, stainless steel sink with mixer tap, electric oven and electric hob with extractor fan over. Integrated washing machine and space for a fridge/freezer.

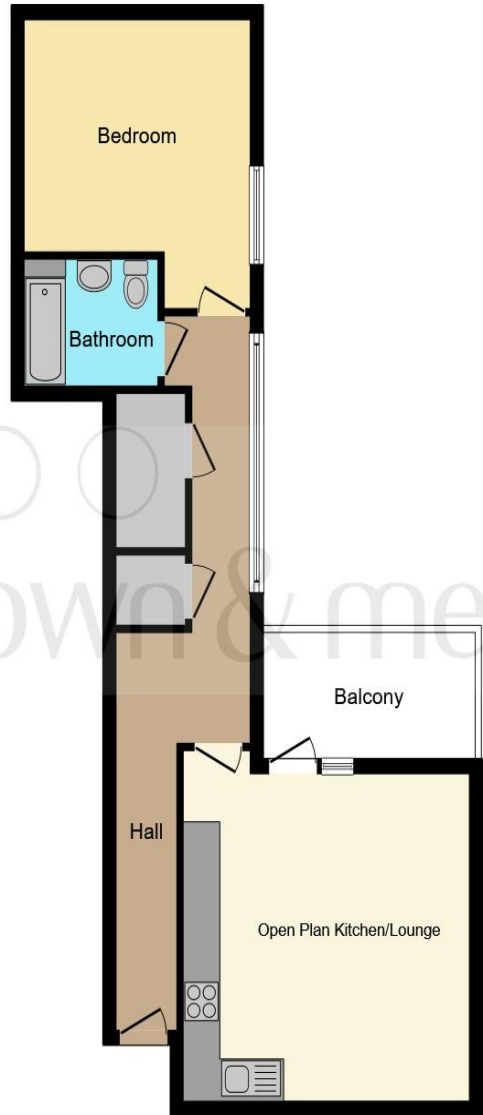
Bedroom

13' 5" x 11' 10" (4.09m x 3.61m)

Electric radiator and double-glazed window to the side.

Bathroom

Fully tiled with a wash hand basin with storage under, low-level WC and a bath with a shower over. Heated towel rail and extractor fan.



brown & merry

This floor plan is for illustrative purposes only. It is not drawn to scale. Any measurements, floor areas (including any total floor area), openings and orientation are approximate. No details are guaranteed, they cannot be relied upon for any purpose and they do not form part of any agreement. No liability is taken for any error, omission or misstatement. A party must rely upon its own inspection(s). Powered by www.focalagent.com



welcome to
Silbury Boulevard,
Milton Keynes

- MODERN ONE-BEDROOM APARTMENT
- PRIME CITY CENTRE LOCATION
- SPACIOUS OPEN-PLAN LIVING
- CONTEMPORARY FITTED KITCHEN
- STYLISH BATHROOM

Tenure: Leasehold EPC Rating: B
Council Tax Band: B Service Charge: 2586.00
Ground Rent: Ask Agent

This is a Leasehold property with details as follows; Term of Lease 150 years from 01 Sep 2018. Should you require further information please contact the branch. Please Note additional fees could be incurred for items such as Leasehold packs.

offers in the region of
£230,000



view this property online [brownandmerry.co.uk/Property/NPL107914](https://www.brownandmerry.co.uk/Property/NPL107914)



Property Ref:
NPL107914 - 0006

1. MONEY LAUNDERING REGULATIONS Intending purchasers will be asked to produce identification documentation at a later stage and we would ask for your co-operation in order that there is no delay in agreeing the sale. 2. These particulars do not constitute part or all of an offer or contract. 3. The measurements indicated are supplied for guidance only and as such must be considered incorrect. Potential buyers are advised to recheck measurements before committing to any expense. 4. We have not tested any apparatus, equipment, fixtures or services and it is in the buyers interest to check the working condition of any appliances. 5. Where an EPC, or a Home Report (Scotland only) is held for this property, it is available for inspection at the branch by appointment. If you require a printed version of a Home Report, you will need to pay a reasonable production charge reflecting printing and other costs. 6. We are not able to offer an opinion either written or verbal on the content of these reports and this must be obtained from your legal representative. 7. Whilst we take care in preparing these reports, a buyer should ensure that his/her legal representative confirms as soon as possible all matters relating to title including the extent and boundaries of the property and other important matters before exchange of contracts.

Brown & Merry is a trading name of Sequence (UK) Limited which is registered in England and Wales under company number 4268443, Registered Office is Cumbria House, 16-20 Hockliffe Street, Leighton Buzzard, Bedfordshire, LU7 1GN. VAT Registration Number is 500 2481 05.


brown & merry



01908 611242



newportpagnell@brownandmerry.co.uk



74A High Street, Newport Pagnell, MILTON
KEYNES, Buckinghamshire, MK16 8AQ



[brownandmerry.co.uk](https://www.brownandmerry.co.uk)