



CORNWALL GARDENS, SW7

£1,250,000

Two Double Bedrooms
Second Floor
Direct Lift Access
Two Bathrooms
Share of Freehold
Private Garden Square

@marshandparsons
marshandparsons.co.uk

MARSH &
PARSONS



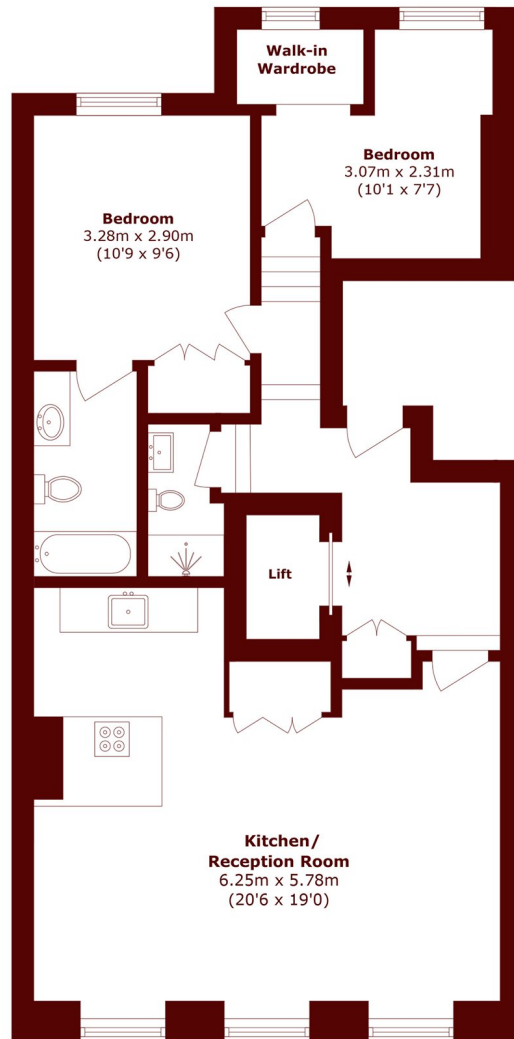
ABOUT THE PROPERTY

A fabulous second floor apartment, with direct lift access (into the property) with two large bedrooms and views over the private gardens below.

Cornwall Gardens is perfectly located for the amenities of Gloucester Road, South Kensington and Kensington High Street as well as being well-placed for the transport links of Gloucester Road Underground Station which services the Piccadilly, Circle & District Lines.



STEP INSIDE CORNWALL GARDENS



Second Floor

Total area (approx.): 69.7 sq. m (750.2 sq. ft)
(Excluding Lift)

South Kensington
020 7590 0800

Energy Rating: E We aim to make our particulars both accurate and reliable. However, they are not guaranteed; nor do they form part of an offer or contract. If you require clarification on any points then please contact us, especially if you're traveling some distance to view. Please note that appliances and heating systems have not been tested and therefore no warranties can be given as to their good working order

MARSH &
PARSONS