

Home is  
**EVERYTHING**



BEAUTIFUL SPACES.  
BETTER LIVING.



QUALITY  
CRAFTSMANSHIP



TIMELESS  
DESIGN



MADE FOR  
MEMORIES

*in the heart of*  
**Frampton Cottrell**

**PLOT 2 & 3 The Croft,  
Frampton Cotterell, BS36 2HL**

**Guide Price: Offers In  
Excess Of £700,000**

**The Croft is an exclusive private development of five detached homes, ideally located in the heart of Frampton Cotterell. These unique properties enjoy far-reaching views across the Frome Valley and feature high-quality modern specifications, including air source heat pumps, underfloor heating, solar panels, and EV charging points — all thoughtfully designed for contemporary living.**

**Built using traditional construction methods and local pennant stone, these homes successfully combine timeless craftsmanship with modern innovation.**

- **PLOT 3 Executive Detached House**
- **4 Double Bedrooms**
- **Open Plan Kitchen/Family Room**
- **Living Room**
- **Study**
- **Ensuite & Family Bathroom**
- **Good Sized Garden**
- **Garage & Parking**
- **Under Floor Heating**
- **Air Source Heat Pumps**







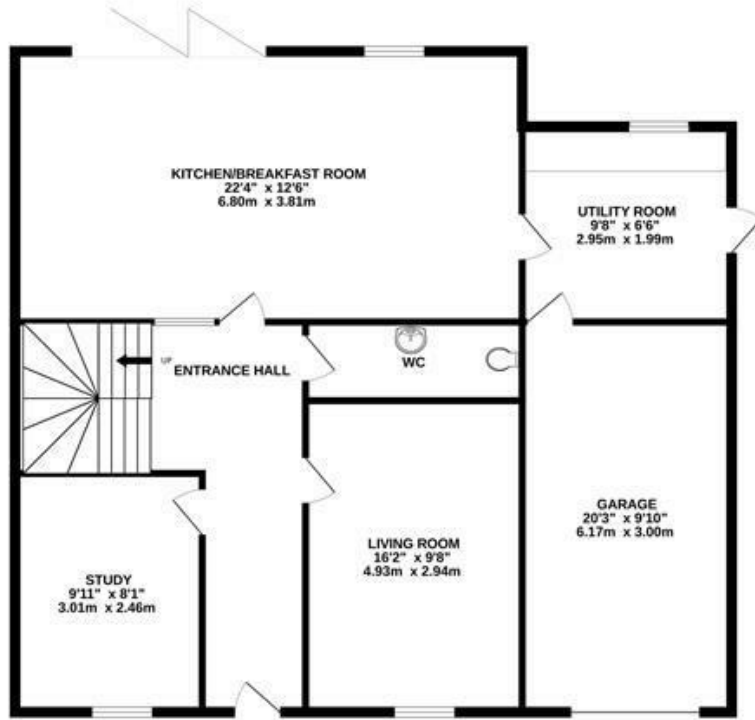




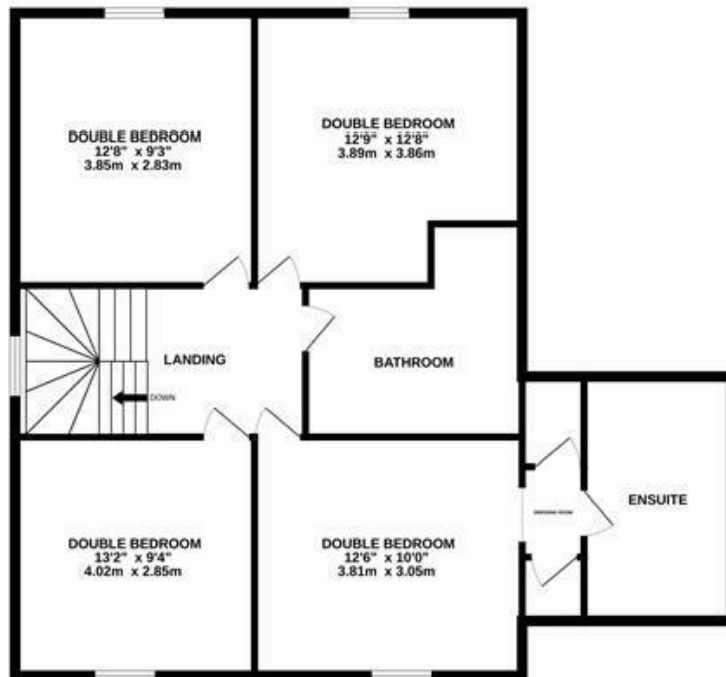




GROUND FLOOR



1ST FLOOR



Measurements are approximate. Not to scale. Illustrative purposes only  
Made with Metropix ©2026

4 Flaxpits Lane  
Winterbourne  
Bristol  
BS36 1JX

[www.aj-homes.co.uk](http://www.aj-homes.co.uk)  
[info@aj-homes.co.uk](mailto:info@aj-homes.co.uk)  
01454 252140

Agents Note: Whilst every care has been taken to prepare these sales particulars, they are for guidance purposes only. All measurements are approximate and for general guidance purposes only and whilst every care has been taken to ensure their accuracy, they should not be relied upon and potential buyers are advised to recheck the measurements