



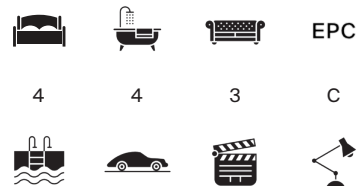
PARK LODGE

Knightsbridge SW7



IN THE HEART OF KNIGHTSBRIDGE

An elegant 4,688 sqft residence boasting four bedrooms and four
bathrooms, in one of London's most sought-after addresses.



Local Authority: City of Westminster

Council Tax band: H

Tenure: Freehold

Guide Price: £9,300,000



SPREAD ELEGANTLY ACROSS FIVE FLOORS

This beautifully crafted home offers four generous bedrooms and four opulent bathrooms. Showcasing sleek, contemporary interiors, it enjoys sun-filled, south-facing views over the peaceful gardens of Brompton Square providing a serene sanctuary in the heart of one of London's most dynamic neighbourhoods.

The sophisticated reception room on the first floor is crafted for both comfort and aesthetics, showcasing a classic fireplace that acts as a central focal point, fostering a warm and welcoming environment.

The bespoke contemporary kitchen represents an ideal combination of practicality, comfort, and visual attractiveness. Created with a focus on functionality, it is equipped with high-end appliances. The elegant and meticulously designed layout highlights both effectiveness and elegance.









Tucked away in one of Knightsbridge's most exclusive and picturesque enclaves, Park Lodge offers a rare blend of tranquillity and central London living.

Residents enjoy access to the luxury boutiques and flagship stores of Harrods and Sloane Street, as well as an exceptional selection of fine dining restaurants, stylish cafés, and cultural institutions including the Victoria & Albert Museum and the Royal Albert Hall.







LARGE WINDOWS ALLOW NATURAL LIGHT THROUGHOUT

The principle bedroom is spacious, equipped with a lavish ensuite bathroom and plenty of storage, ensuring both comfort and functionality in an elegantly designed area. The second two bedrooms are both generously proportioned, each featuring a private ensuite bathroom. Bedrooms two and three are set on the second floor and offer an abundance of natural light, comfortable seating areas and ample storage.

The house includes a private swimming pool, jacuzzi and home cinema offering an excellent place to relax.



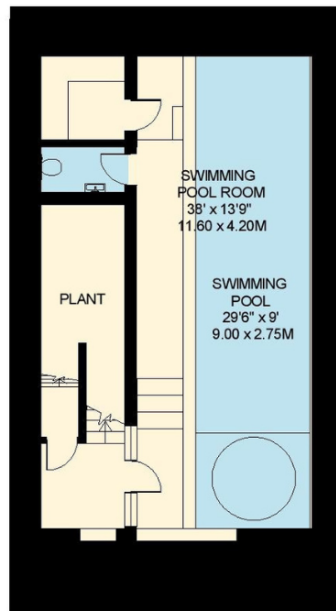
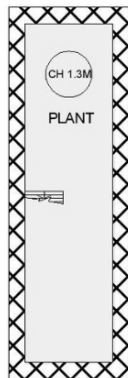
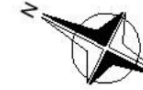


Transport links are excellent, with Knightsbridge (Piccadilly Line) and South Kensington (District, Circle, and Piccadilly Lines) Underground stations nearby, offering quick connections across the capital. The area is also well served by prestigious schools and is favoured by professionals, families, and international buyers alike.

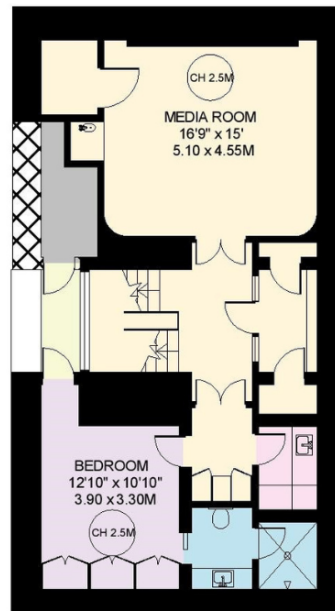








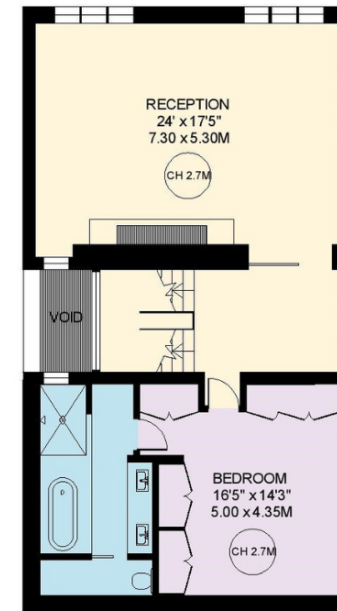
SUB-BASEMENT 800 SQ.FT.



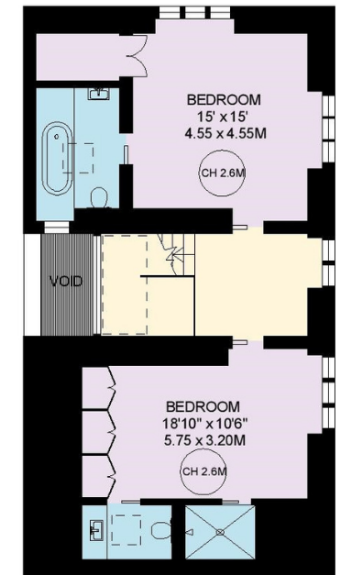
LOWER GROUND FLOOR 850 SQ.FT.



GROUND FLOOR 1023 SQ.FT.



FIRST FLOOR 1020 SQ.FT.



SECOND FLOOR 775 SQ.FT.

Approximate Gross Internal Area = 435.5 sq m / 4688 sq ft

This plan is for layout guidance only. Not drawn to scale unless stated. Windows and door openings are approximate. Whilst every care is taken in the preparation of this plan, please check all dimensions, shapes and compass bearings before making any decisions reliant upon them. (ID767266)

We would be delighted
to tell you more.

Omar Areef
02035 977 673
omar.areef@knightfrank.com

Knight Frank Knightsbridge
52-54 Sloane Avenue
SW3 3DD

knightfrank.co.uk

Your partners in property

1. Particulars: These particulars are not an offer or contract, nor part of one. You should not rely on statements given by Knight Frank in the particulars, by word of mouth or in writing ("information") as being factually accurate about the property, its condition or its value. Neither Knight Frank nor any joint agent has any authority to make any representations about the property, and accordingly any information given is entirely without responsibility on the part of Knight Frank. 2. Material Information: Please note that the material information is provided to Knight Frank by third parties and is provided here as a guide only. While Knight Frank has taken steps to verify this information, we advise you to confirm the details of any such material information prior to any offer being submitted. If we are informed of changes to this information by the seller or another third party, we will use reasonable endeavours to update this as soon as practical. 3. Photos, Videos etc: The photographs, property videos and virtual viewings etc. show only certain parts of the property as they appeared at the time they were taken. Areas, measurements and distances given are approximate only. 4. Regulations etc: Any reference to alterations to, or use of, any part of the property does not mean that any necessary planning, building regulations or other consent has been obtained. A buyer must find out by inspection or in other ways that these matters have been properly dealt with and that all information is correct. 5. Fixtures and fittings: A list of the fitted carpets, curtains, light fittings and other items fixed to the property which are included in the sale (or may be available by separate negotiation) will be provided by the Seller's Solicitors. 6. VAT: The VAT position relating to the property may change without notice. 7. To find out how we process Personal Data, please refer to our Group Privacy Statement and other notices at <https://www.knightfrank.com/legals/privacy-statement>.

Particulars dated May 2024. Photographs and videos dated May 2024. All information is correct at the time of going to print. Knight Frank is the trading name of Knight Frank LLP. Knight Frank LLP is a limited liability partnership registered in England and Wales with registered number OC305934. Our registered office is at 55 Baker Street, London W1U 8AN. We use the term 'partner' to refer to a member of Knight Frank LLP, or an employee or consultant. A list of members names of Knight Frank LLP may be inspected at our registered office. If you do not want us to contact you further about our services then please contact us by either calling 020 3544 0692, email to marketing.help@knightfrank.com or post to our UK Residential Marketing Manager at our registered office (above) providing your name and address.