



jordan fishwick

WEST DIDSBURY
Barlow Moor Road



Barlow Moor Road, West Didsbury, M20 2PU

£1,150 Per Calendar Month



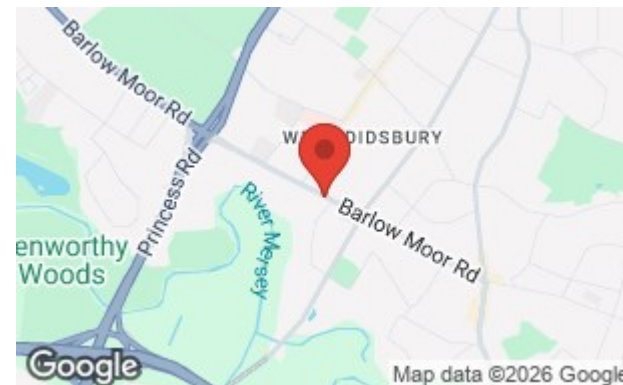
The Property

***** AVAILABLE SEPTEMBER ***** A stunning one bedroom garden apartment occupying the lower ground level of a beautifully converted period property. Equidistant between Didsbury Village and West Didsbury's Burton Road, the location is extremely convenient with easy links to all local amenities including the Metrolink. Inside, the property is presented to a very high standard indeed and wants for nothing. The accommodation comprises of a private entrance hall leading to an open plan lounge and kitchen, a double bedroom, spacious re-fitted bathroom and private outdoor terrace to the front. The property is surrounded by communal gardens with a residents' car park to the rear. Fully Furnished. Call our Didsbury office to arrange a viewing.

EPC Rating D // Council Tax Band A

Directions

M20 2PU



- Available September
- One Double Bedroom
- Lower Ground Apartment
- Beautifully Modern in Design
- Ideal for Single Occupants or Couples
- Great Location of Barlow Moor Road
- Close to all Local Amenities
- Parking Available
- Council Tax Band
- EPC Rating

Postcode - M20 2PU

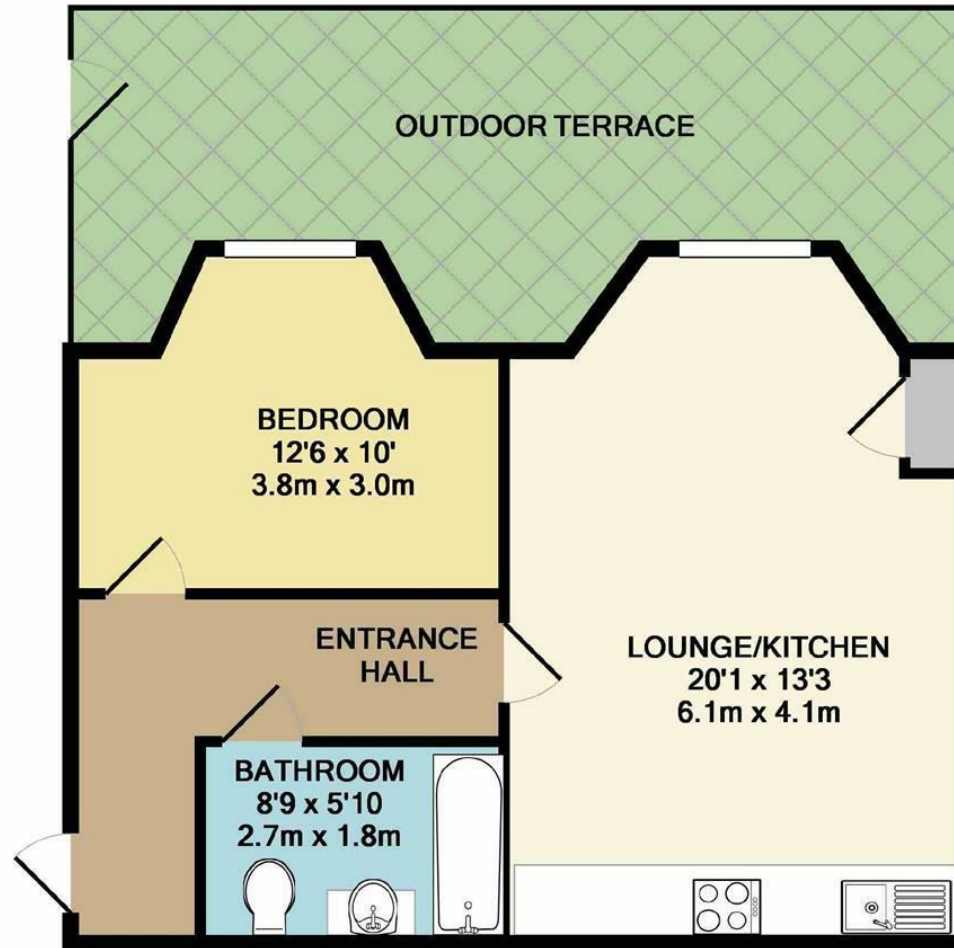
EPC Rating - D

Floor Area - sq ft

Local Authority - Manchester City Council

Council Tax - A





TOTAL APPROX. FLOOR AREA 483 SQ.FT. (44.9 SQ.M.)
 Measurements are approximate. Not to scale. Illustrative purposes only
 Made with Metropix ©2017



These particulars are believed to be accurate but they are not guaranteed and do not form a contract. Neither Jordan Fishwick nor the vendor or lessor accept any responsibility in respect of these particulars, which are not intended to be statements or representations of fact and any intending purchaser or lessee must satisfy himself by inspection or otherwise as to the correctness of each of the statements contained in these particulars. Any floorplans on this brochure are for illustrative purposes only and are not necessarily to scale.

Offices also at: Wilmslow, Macclesfield, Hale, Sale, Chorlton, Glossop, Manchester & Salford

757-759 Wilmslow Road, Didsbury Village, Manchester

0161 445 4480

didsbury@jordanfishwick.co.uk
 www.jordanfishwick.co.uk