



Cadogan Street, Chelsea SW3

ASHDOWN MARKS
PROPERTY CONSULTANTS



Cadogan Street

Chelsea, SW3

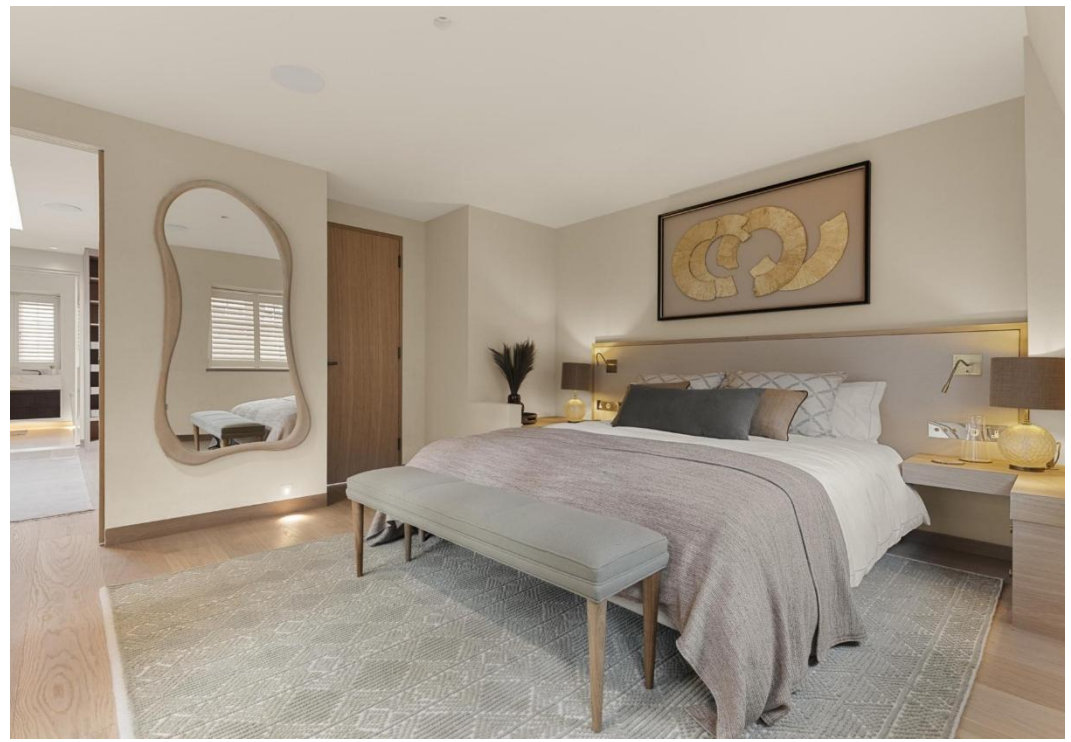
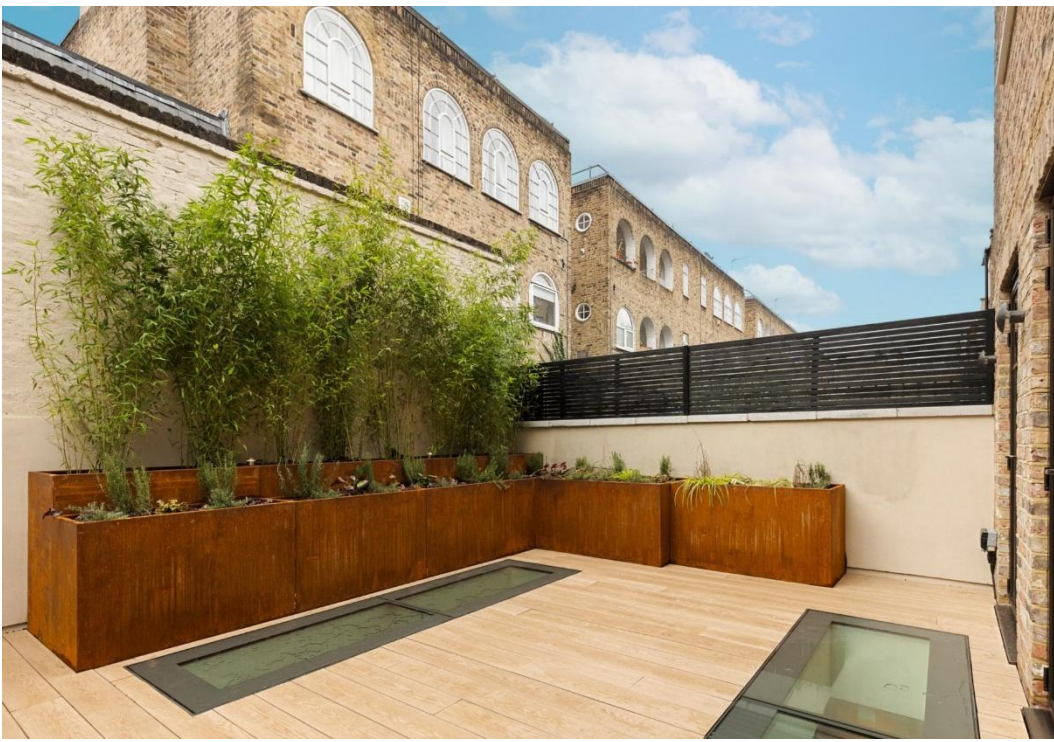
A spectacular five bedroom low built family house offering exceptional step-free living with the rare advantage of a LIFT providing seamless access to all floors.

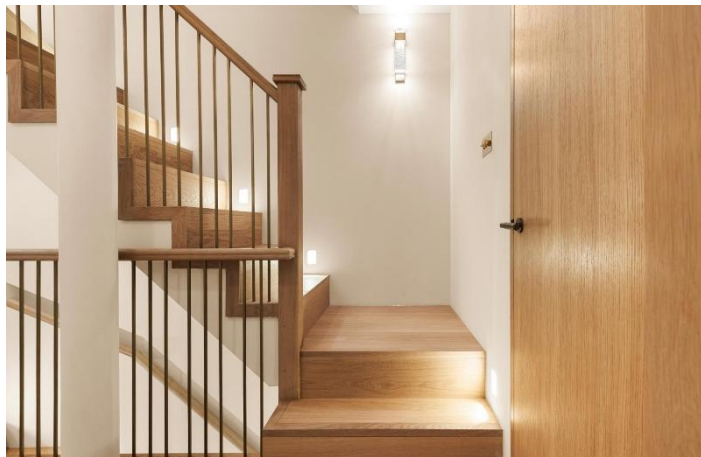
**** 10 Year New Build Warranty ****

Virtually rebuilt behind the original façade, the property has been comprehensively remodelled to an exacting standard, blending contemporary design with practical family living.

The property features elegant hard flooring throughout complemented by underfloor heating. Upper floors benefit from integrated air conditioning, ensuring year-round comfort, while bespoke joinery has been thoughtfully designed across the house, providing both visual consistency and ample storage. Every element of the home has been carefully considered to deliver a refined living experience with a strong emphasis on comfort, accessibility, and quality.





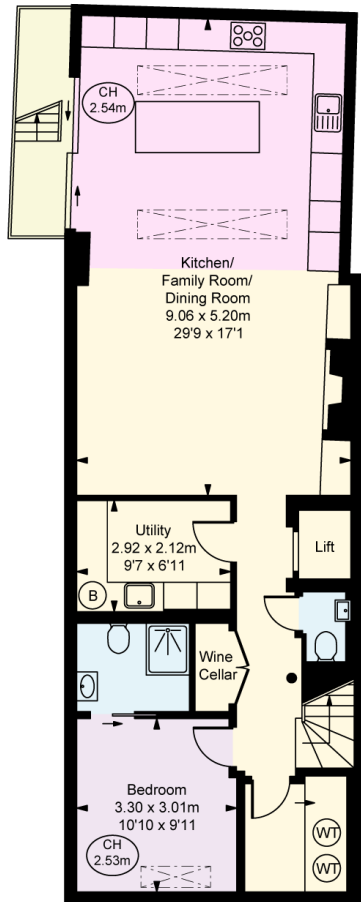


- Drawing Room
- Dining Room
- Kitchen/Dining/Family Room
- 5 Double Bedrooms
- 4 Bathrooms (3 En Suite)
- Lift to all floors
- Garden
- Part Air Conditioning
- Underfloor Heating throughout
- EPC: Rating B
- Council Tax: Band H
- 10 Year New Build Warranty
- Fully Furnished
- The SPV owning company is available to purchase with Stamp Duty advantages

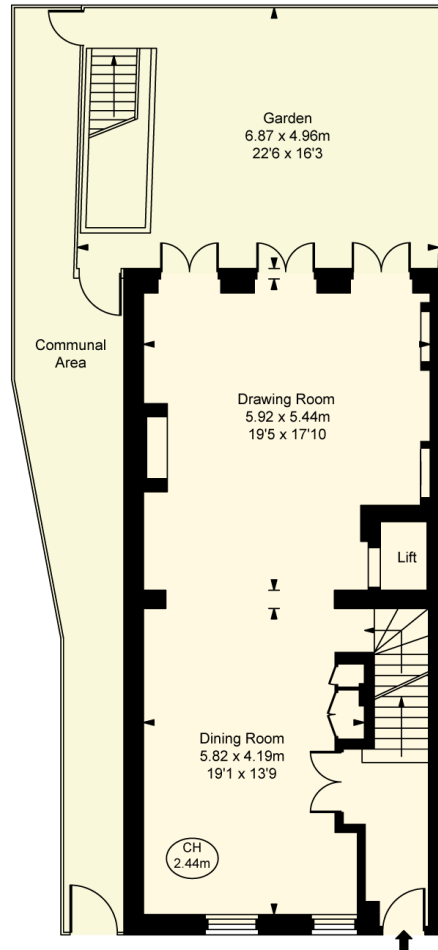
Freehold

Guide Price £9,250,000

(to include contents)



Lower Ground Floor
Approximate Gross Internal Area
85.37 sq m / 919 sq ft

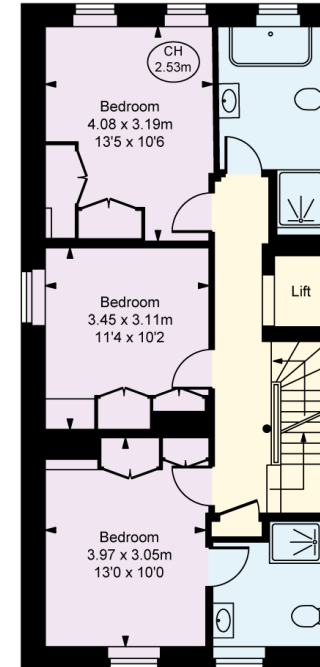
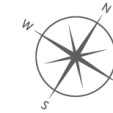


Ground Floor
Approximate Gross Internal Area
65.25 sq m / 702 sq ft

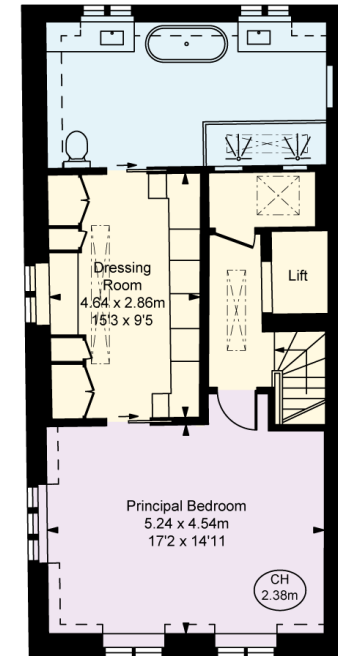
Cadogan Street, SW3
Approximate Gross Internal Area
274.80 sq m / 2,958 sq ft

(Including restricted height
under 1.5m □ = □)
(CH = Ceiling Heights)

Total Area to include Thermal
Insulation to Lower Ground Floor
281.62 sq m / 3,031 sq ft



First Floor
Approximate Gross Internal Area
62.81 sq m / 676 sq ft



Second Floor
Approximate Gross Internal Area
61.37 sq m / 661 sq ft



This plan is not to a given scale. A detailed layout plan to scale for valuation is available on request. All measurements and areas are within 1% tolerance and have been prepared in accordance with industry standards as defined in the RICS Code of Measuring Practice

© Fulham Performance

Important notice: Ashdown Marks, their clients and any joint agents give notice that: 1: They are not authorised to make or give any representations or warranties in relation to the property either here or elsewhere, either on their own behalf or on behalf of their client or otherwise. They assume no responsibility for any statement that may be made in these particulars. These particulars do not form part of any offer or contract and must not be relied upon as statements or representations of fact. 2: Any areas, measurements or distances are approximate. The text, photographs and plans are for guidance only and are not necessarily comprehensive. It should not be assumed that the property has all necessary planning, building regulation or other consents and Ashdown Marks have not tested any services, equipment or facilities.

9 Milner Street, London, SW3 2QB

Tel: +44 (0)20 7589 3353

www.ashdownmarks.co.uk

ASHDOWN MARKS
PROPERTY CONSULTANTS