

Marshalls Barn, Epping

Thornwood, Epping

An exceptional Grade II listed barn conversion nestled within approximately 2.5 acres of beautiful grounds on the outskirts of Epping. Steeped in over 300 years of history, this beautiful barn has been lovingly transformed into a modern family home.

Council Tax band: F

Tenure: Freehold

- GRADE II LISTED PERIOD BARN CONVERSION
- GATED DRIVEWAY
- BEAUTIFUL GROUNDS AND PADDOCK
- DOUBLE CAR PORT AND GARAGE
- FIVE EN-SUITE BEDROOMS
- WINE CELLAR
- MEZZANINE + OFFICE SPACE
- SOLD WHITE AMERICAN OAK FLOORS
- BI-FOLD DOORS IN MAIN RECEPTION
- SET ON A 2.5 ACRE PLOT (APPROX)



Lounge / Diner

24' 7" x 29' 11" (7.49m x 9.12m)

Kitchen

24' 7" x 11' 9" (7.49m x 3.58m)

Utility Room

Sitting Room

19' 3" x 25' 1" (5.87m x 7.65m)

Bedroom One

17' 2" x 17' 11" (5.23m x 5.46m)

Dressing Room

Bedroom Two

11' 6" x 13' 3" (3.51m x 4.04m)

Bedroom Three

10' 6" x 10' 9" (3.20m x 3.28m)

Bedroom Four

9' 10" x 11' 9" (3.00m x 3.58m)

Bedroom Five

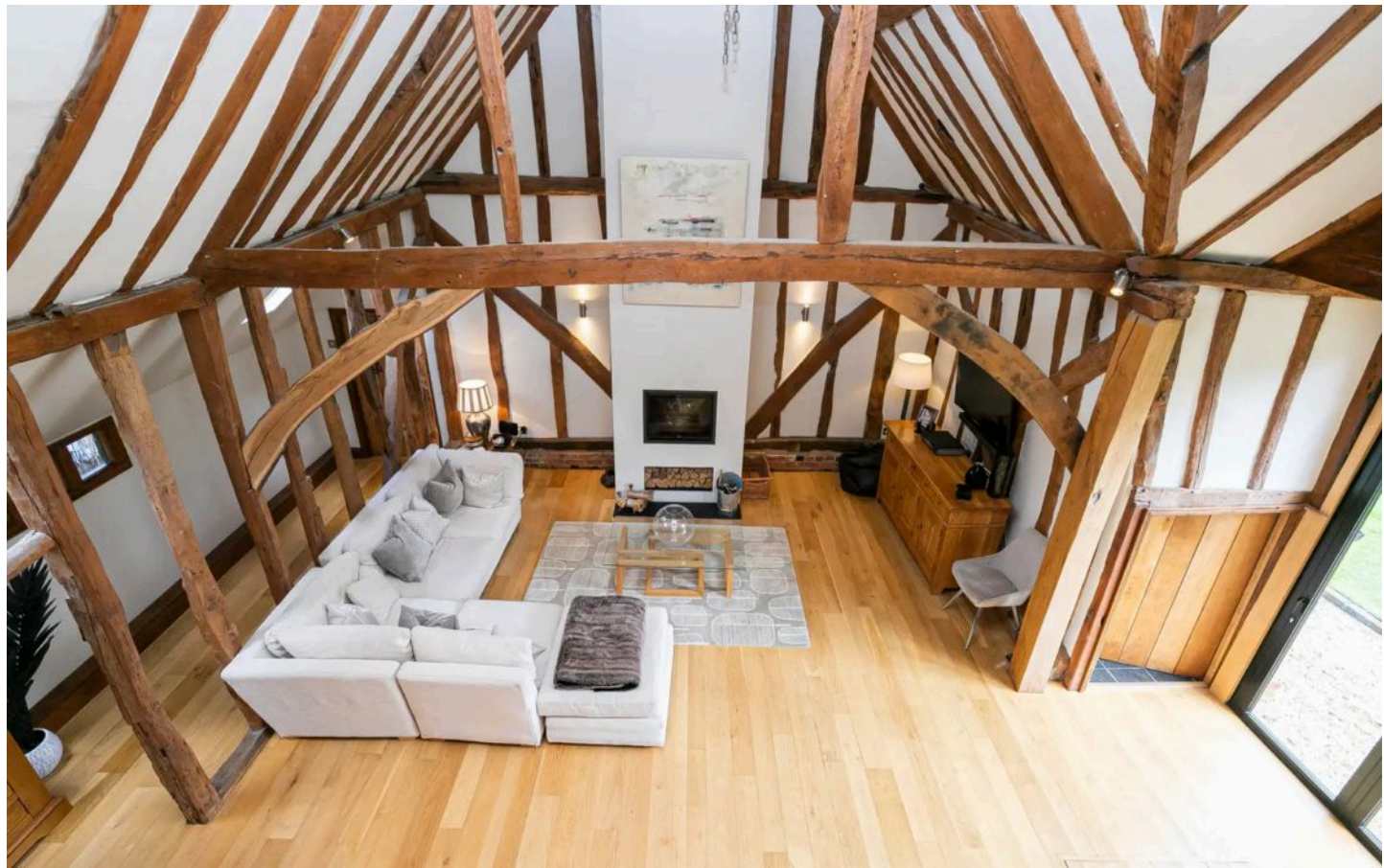
9' 11" x 8' 4" (3.02m x 2.54m)

Mezzanine

10' 0" x 17' 8" (3.05m x 5.38m)

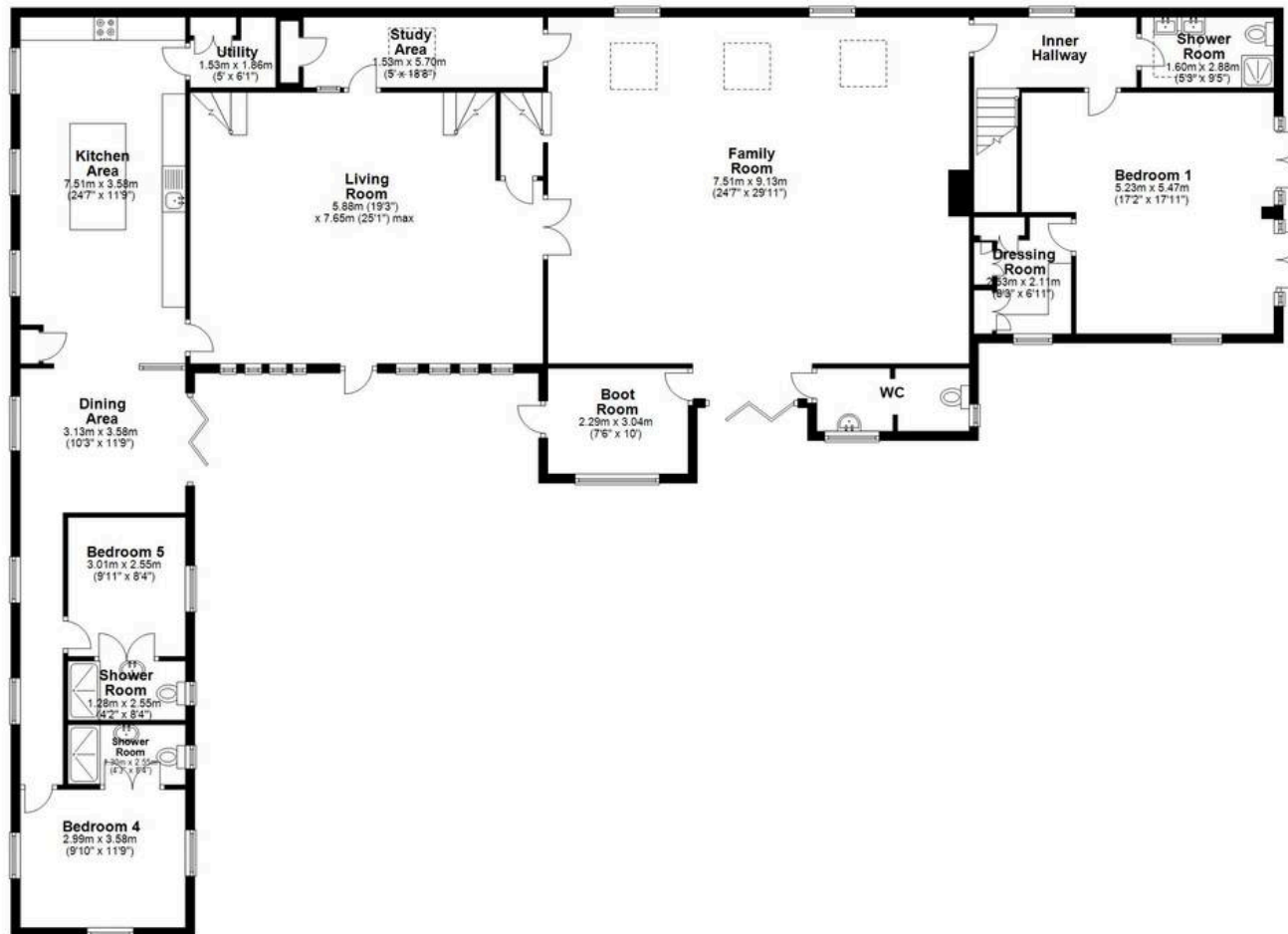
Office

10' 0" x 17' 8" (3.05m x 5.38m)

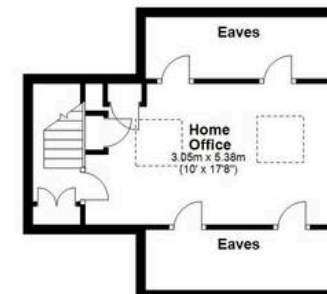
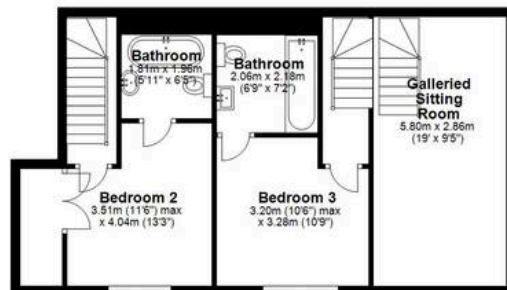




Ground Floor
Approx. 257.3 sq metres (2769.4 sq. feet)



First Floor
Approx. 87.8 sq metres (945.1 sq. feet)



Lower Ground Floor
Approx. 6.9 sq. metres (74.1 sq. feet)



Total area: approx. 352.0 sq. metres (3788.6 sq. feet)