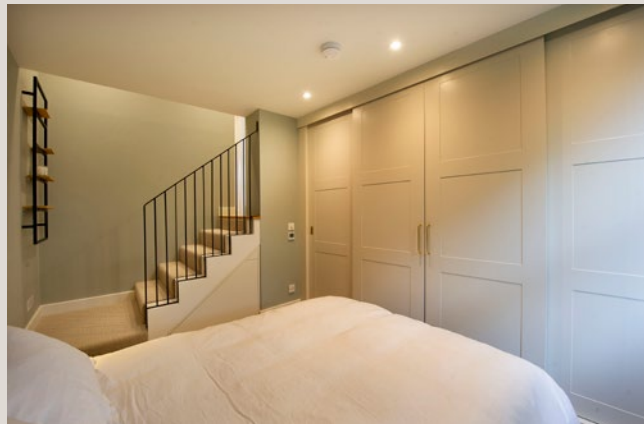
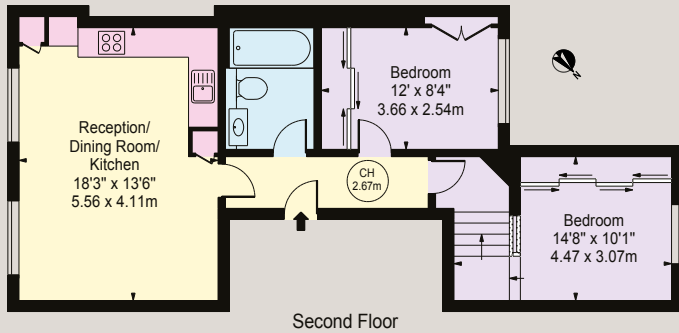




Blenheim Crescent,
W11

Approx. Gross Internal Area
623 sq ft (57.88 sq m)



Blenheim Crescent, W11

RECENTLY REFURBISHED - A SUPERB TWO BEDROOM FLAT IN A FANTASTIC LOCATION

The accommodation comprises

- Two double bedrooms
- Beautifully finished bathroom
- Open plan reception room with kitchen
- Recently refurbished
- Furnished or Unfurnished
- Available now

For clarification purposes we wish to inform all interested parties that we have prepared these particulars as a general guide. We have not carried out a detailed survey nor tested the services, appliances and specific fittings. Room sizes should not be relied upon for carpets and furnishings

Terms

Rent	£4,116.67 per calendar month / £950 per week
Furniture	Furnished or Unfurnished
Availability	Now
EPC Rating	D
Council Tax	Band E

JOHN WILCOX
& Co.

020 7602 2352

www.johnwilcox.co.uk