



Castletown Road, W14

£600,000

Dexters



Castletown Road, W14

Located in the popular West Kensington grid - minutes from the prestigious Queen's Lawn Tennis Club - this two-bedroom luxury flat is situated in one of the area's most elegant, terraced streets.

Situated on the raised ground floor of an elegant, historic period building, the flat features iconic white Regency front, with soaring high ceilings, wooden floors, original fixtures and stunning bay windows, flooding the flat with natural light.

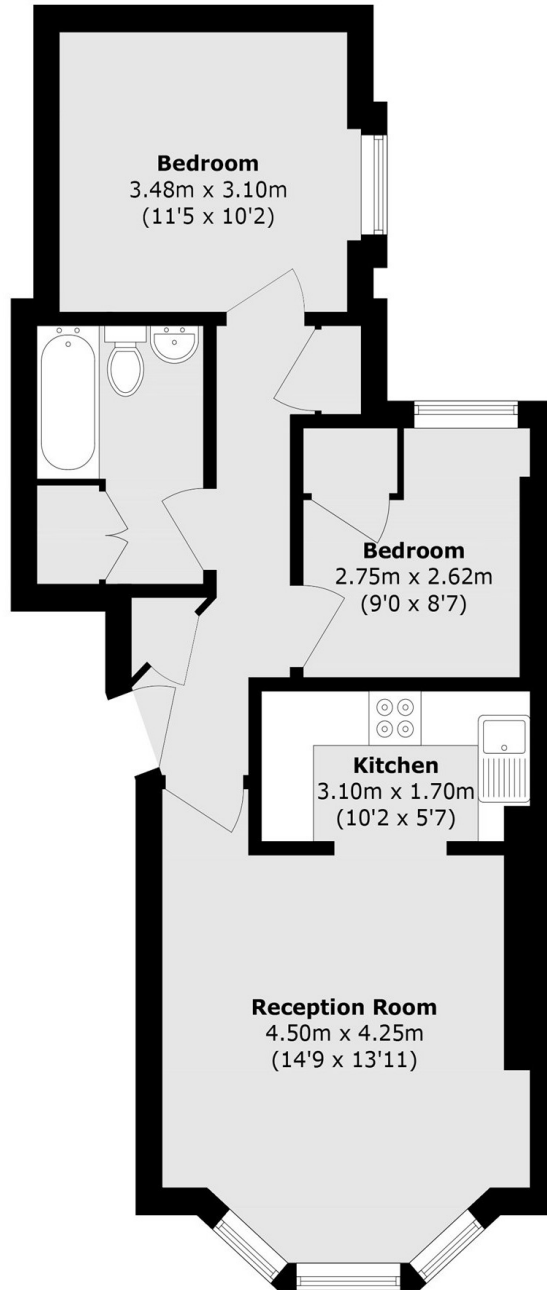
Literally a two-minute walk from West Kensington Zone 2 Underground station and close proximity to the prestigious Queen's Tennis Club, with eligibility to special tickets as a neighbouring resident. The flat is located in an enviable position, right next to the neighbouring exclusive areas of High Street Kensington, Fulham and Chelsea.

Features

- Share Of Freehold
- Two Bedrooms
- Close To Tubes
- Raised Ground Floor
- No Chain
- Popular Location



Castletown Road, London, W14



Total area (approx.): 55.7 sq. m (599.5 sq. ft)