



Price

£100,000

Leasehold

1x  1x  1x 

**Massetts Road, Horley,
Surrey, RH6**

cubitt & west
Helping you move forwards



Main features

- Ground floor retirement flat for the over 60's
- Resident management team
- Careline alarm service
- Communal parking and direct access from the lounge to the communal gardens
- Lift, lounge & laundry facilities plus social activities

Accommodation

GROUND FLOOR

Entrance Hall

Lounge/Diner: 17'5 x 11'2 (5.31m x 3.41m)

Kitchen: 5'7 9 x 0'0 (1.70m x 0.00m)

Bedroom: 15'9 x 8'9 (4.80m x 2.67m)

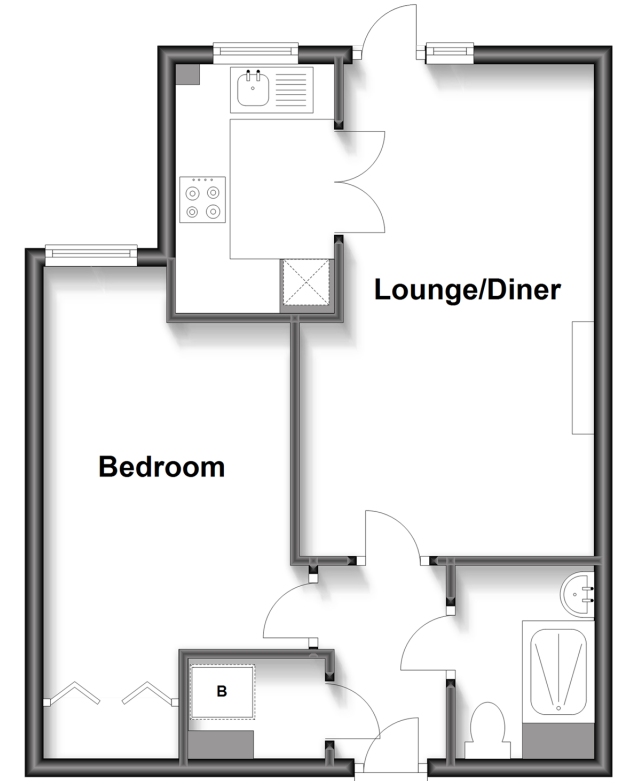
Shower Room

OUTSIDE

Communal Gardens

Communal Parking

Ground Floor
Approx. 43.1 sq. metres (463.5 sq. feet)



Call Horley - 01293 785338 ■ cubittandwest.co.uk

- Legal advice should be taken to verify fixtures/fittings, planning, alterations and/or lease details
- Appliances & services are untested, dimensions are approximate and floor plans are not to scale



20810599/20250614/BG/SR2