

## Rolling Mills Mews, E14

### £425,000

Welcome to this charming two-bedroom home located in the heart of Limehouse.

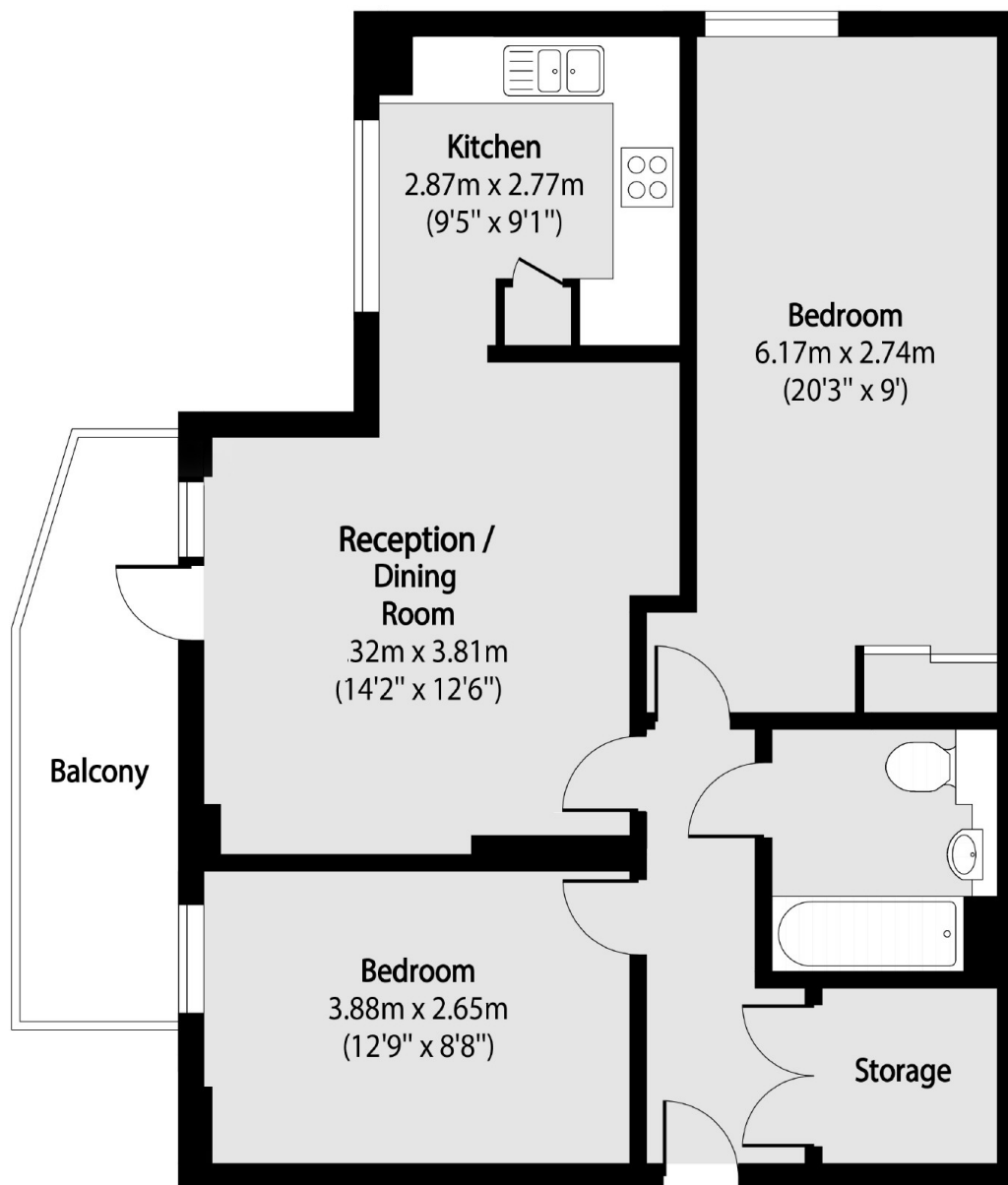
This well-presented property benefits from a private balcony, access to a communal roof terrace, and is offered to the market chain-free making it an ideal choice for both first-time buyers and investors alike.

Rolling Mills Mews is ideally located just 0.2 miles from Limehouse DLR Station, providing excellent transport links across the City and beyond.

### Features

- Two Bedrooms
- Moments From Station
- Chain Free
- Private Balcony
- Communal Roof Terrace
- Limehouse

# Rolling Mills Mews, London, E14



Total area (approx): 68.47 sq m (737 sq. ft)

Balcony total area (approx): 7.25 sq m (78 sq. ft)

## Dexters

Wapping  
123 Wapping High Street  
London  
E1W 3NX  
Sales  
020 7650 5350

Energy Rating: B. We aim to make our particulars both accurate and reliable. However they are not guaranteed; nor do they form part of an offer or contract. If you require clarification on any points then please contact us, especially if you're traveling some distance to view. Please note that appliances and heating systems have not been tested and therefore no warranties can be given as to their good working order.

 **RICS** | Regulated  
Estate Agent  
and Letting Agent

[dexters.co.uk](https://www.dexters.co.uk)