



Wallis Road, E9

£600,000

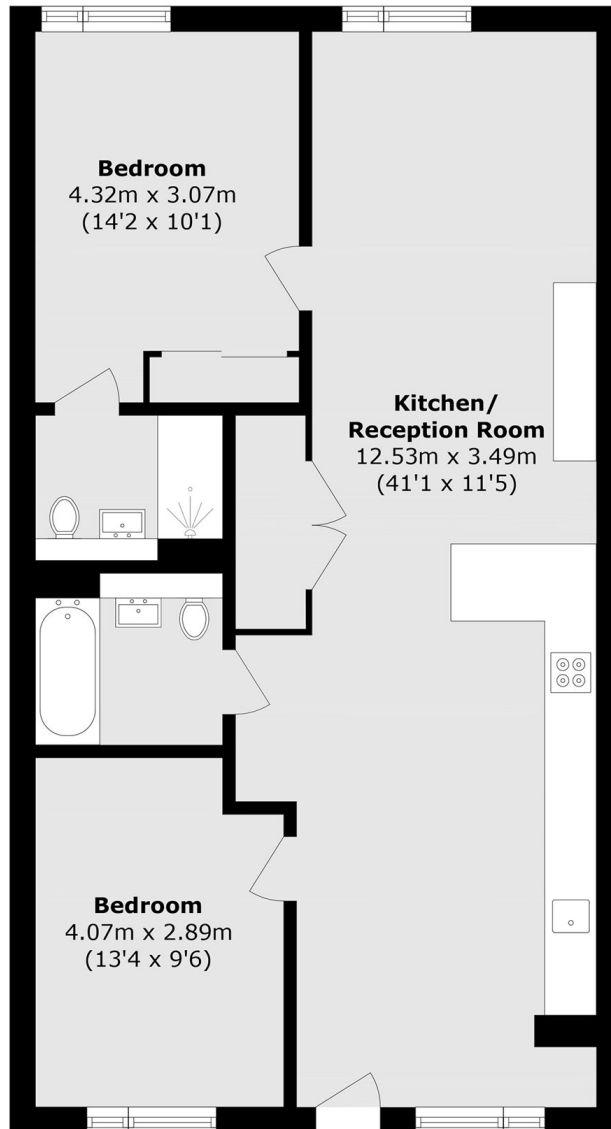
A two double bedroom, two bathroom apartment measuring in excess of 880 square feet and located on the second floor of a modern development. This property has a dual aspect open plan living and kitchen area with peninsula Island. It benefits from a private front terrace and overlooks the open communal courtyard. In addition, there is floor to ceiling windows throughout, generous storage and bespoke hard flooring.

This property is located under 30 yards from the canal with its many Bars, Shops and eateries. The station is under a quarter of mile walk with access to Stratford international one stop away. Westfield shopping centre is under a mile walk through the Olympic Park.

Features

- Two Double Bedrooms
- Two Bathrooms
- Open Plan
- 880+ Square Feet
- Modern
- Secure

Wallis Road, London, E9



Total area (approx.): 81.8 sq. m (880.4 sq. ft)