

# FLETCHERS

ESTATE AGENTS



## Elliott Road, W4

£575,000

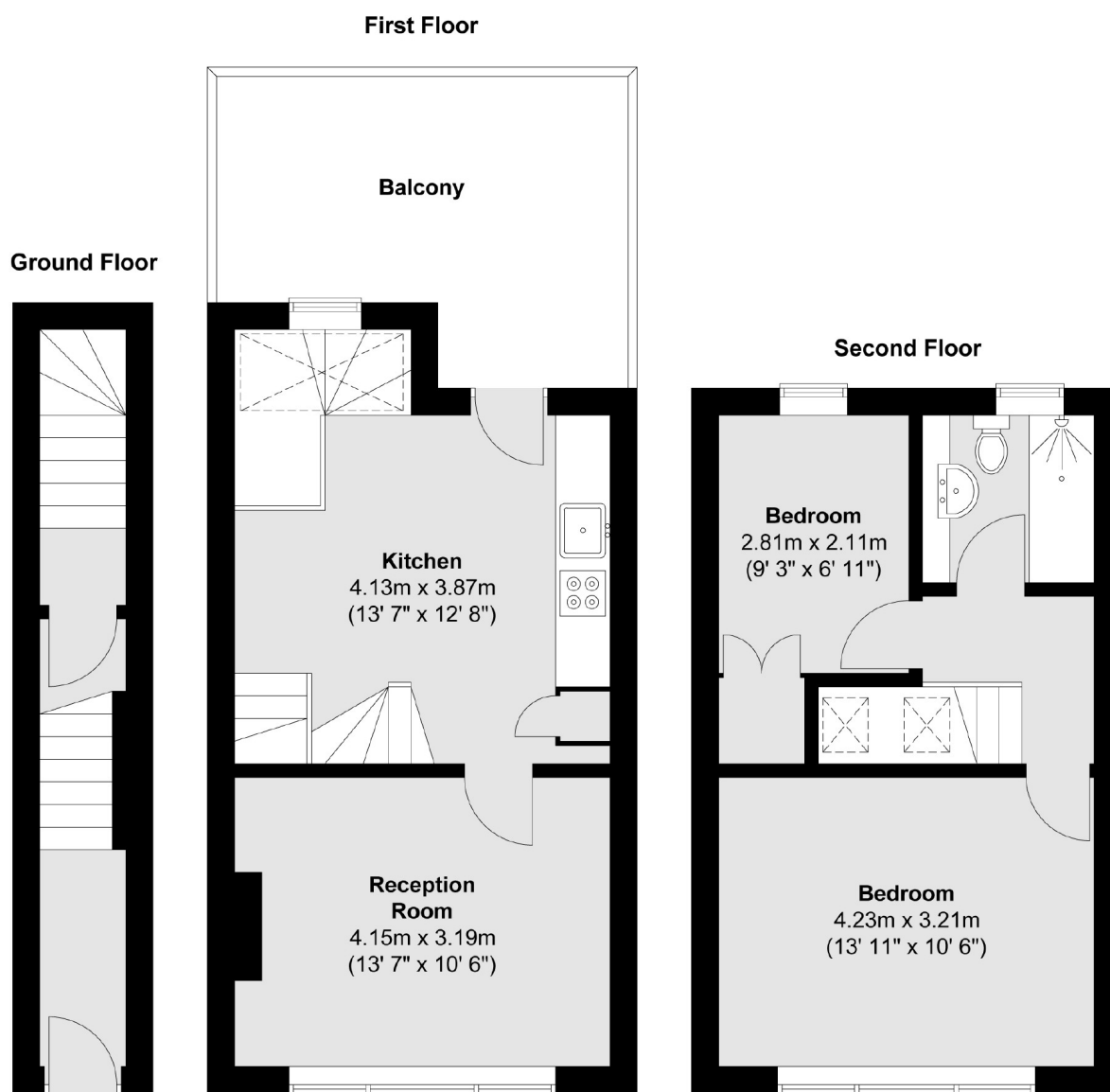
A well-located split-level apartment offering two bedrooms, a separate eat-in kitchen, and a private terrace. The property is arranged over two floors and provides well-proportioned living space throughout.

An ideal location in the heart of Chiswick, conveniently placed just off Chiswick High Road and Turnham Green Terrace and surrounded by amenities including boutique shops, restaurants and cafés. Turnham Green Station and Chiswick Common are just at the end of the street.

• No Onward Chain • Westerly Facing Private Terrace • Two Bedrooms • Private Entrance • Chiswick High Road • Turnham Green Station •

# FLETCHERS

ESTATE AGENTS



Total area (approx.) : 69.7 sq. m (750 sq. ft)  
Total balcony area (approx.) : 12 sq. m (129 sq. ft)

Fletchers Chiswick Turnham Green Sales  
58 Turnham Green Terrace, London, W4 1QP  
020 8987 3000  
[chiswicksales@fletcherestates.com](mailto:chiswicksales@fletcherestates.com)

Energy Rating: C. We aim to make our particulars both accurate and reliable. However they are not guaranteed; nor do they form part of an offer or contract. If you require clarification on any points then please contact us, especially if you're traveling some distance to view. Please note that appliances and heating systems have not been tested and therefore no warranties can be given as to their good working order.