



Stockwell Park Walk, SW9
£575,000

Dexters



Stockwell Park Walk, SW9

This impressive apartment is positioned on the first floor of a sought after modern development in the heart of Brixton. The property offers a spacious open plan reception room with a fully integrated kitchen, ideal for both everyday living and entertaining. There are two well proportioned double bedrooms, complemented by two contemporary bathrooms, one of which is en-suite to the principle bedroom. The apartment then has the added benefit of a winter garden that provides a versatile additional living space.

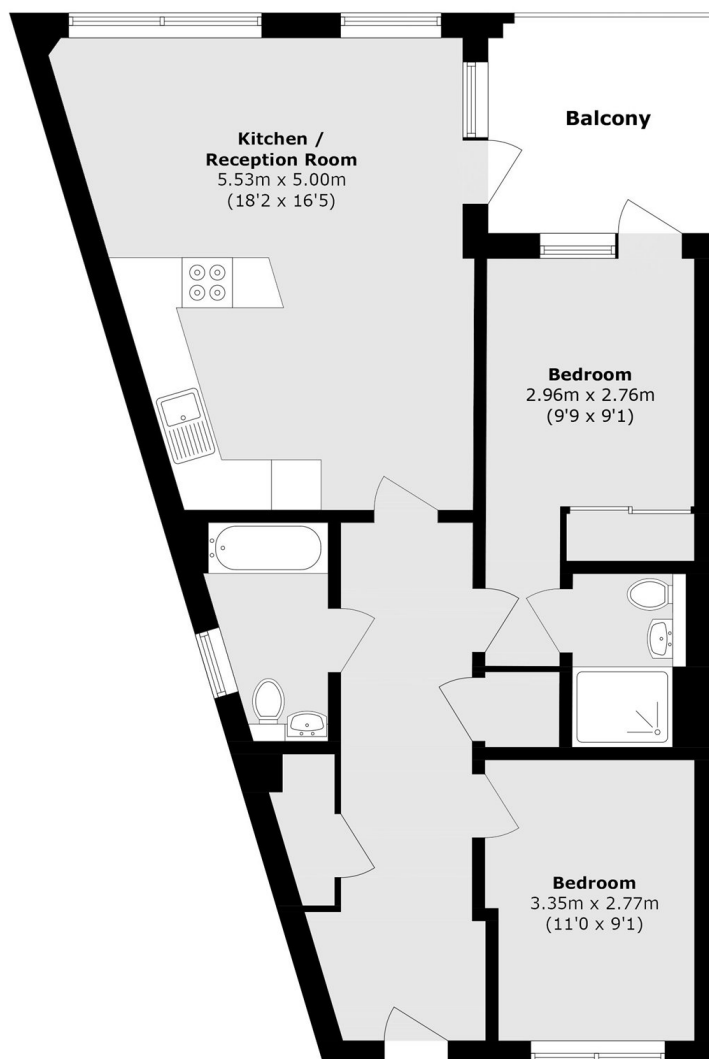
Stockwell Park Walk is ideally located just moments from the vibrant Brixton town centre, renowned for its wide selection of restaurants, bars, and shops. Excellent transport links are close at hand, with both Brixton and Stockwell Underground stations (Victoria and Northern lines) nearby.

Features

- Open Plan Reception
- Two Bedrooms
- Two Bathrooms
- Chain Free
- Bike Storage
- Superb Location



Stockwell Park Walk, London, SW9



Total area (approx.): 64.2 sq. m (691.0 sq. ft)

Balcony area (approx.): 6.7 sq. m (72.1 sq. ft)

Dexters

Clapham High Street
55 Clapham High Street
London
SW4 7TG
Sales
020 7483 6363

Energy Rating: B. We aim to make our particulars both accurate and reliable. However they are not guaranteed; nor do they form part of an offer or contract. If you require clarification on any points then please contact us, especially if you're traveling some distance to view. Please note that appliances and heating systems have not been tested and therefore no warranties can be given as to their good working order.

 **RICS** | Regulated
Estate Agent
and Letting Agent

[dexters.co.uk](https://www.dexters.co.uk)