

AVAILABLE



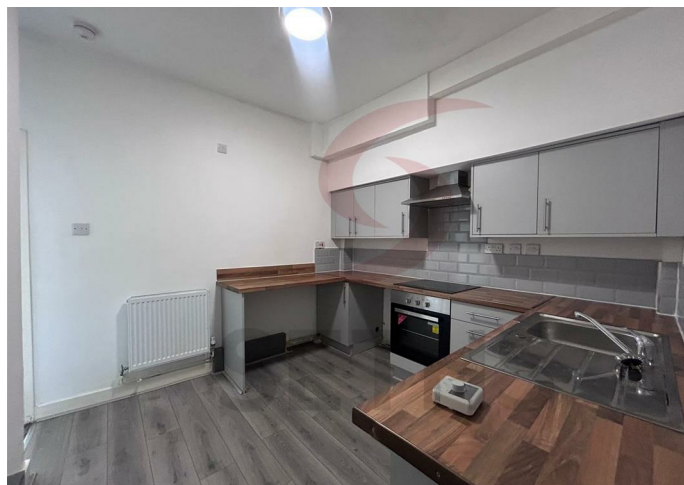
Apartment

MILLIGAN ROAD LEICESTER LE2 8FF

£825 PCM

FEATURES

- Ground Floor
- En Suite
- Excellent Condition
- PVCu Double Glazed Windows
- Apartment
- Newly Refurbished
- Gas Central Heating
- On Road Parking



 **SETHS**

1 Bedroom Apartment located in Leicester

****No Deposit Option Available****

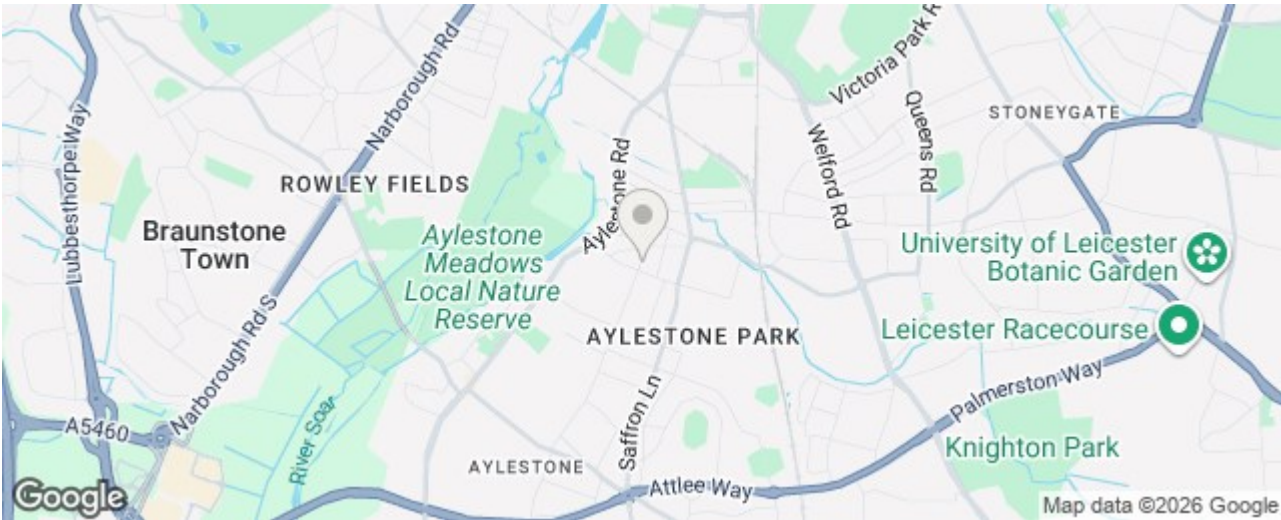
Seths are delighted to present this beautifully refurbished ground floor flat, ideal for professionals, or anyone seeking comfortable, modern living.

Situated on the corner of Milligan Road, this charming one-bedroom home offers a spacious reception room perfect for relaxing or entertaining, a sleek new kitchen fitted with modern appliances, and a private En suite bathroom for added convenience.

The property has been finished to a high standard throughout, featuring gas central heating and double-glazed PVCu windows for year-round comfort. On-road parking is available, and the location offers easy access to local amenities and transport links.

Move-in ready and designed with lifestyle in mind this is a home where comfort meets convenience.

Rent: £825PCM
Security Deposit: £950.00
Tenancy Length: 6
Council Tax Band: A
Pets may be considered at the landlord's discretion and will be subject to a higher rent.




Call us on
0116 266 9977

let@seths.co.uk
www.seths.co.uk

Council Tax Band

A

Energy Efficiency Rating		
	Current	Potential
Very energy efficient - lower running costs		
(92 plus) A		
(81-91) B		
(69-80) C	79	79
(55-68) D		
(39-54) E		
(21-38) F		
(1-20) G		
Not energy efficient - higher running costs		
England & Wales	EU Directive 2002/91/EC 	

Agents Note: Whilst every care has been taken to prepare these particulars, they are for guidance purposes only. All measurements are approximate and are for general guidance purposes only and whilst every care has been taken to ensure their accuracy, they should not be relied upon and potential buyers are advised to recheck the measurements.

