

11 Weston Way  
Pyrford  
Woking  
GU22 8RW





11 Weston Way  
£795,000

Local Authority

Woking

Council Tax Band

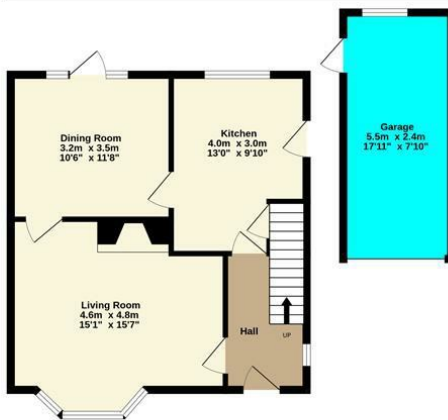
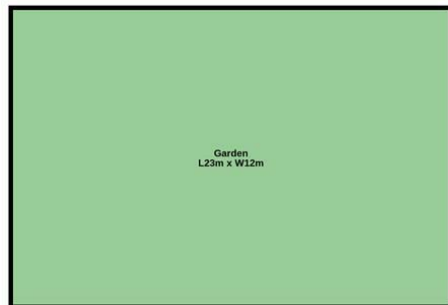
F

Directions

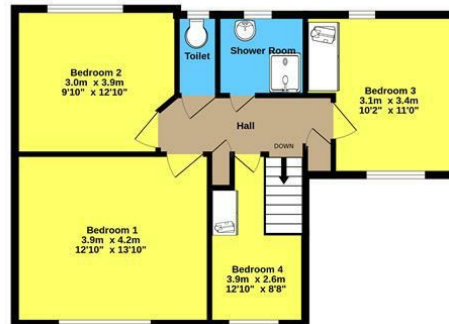
Energy Efficiency Rating		
	Current	Potential
Very energy efficient - lower running costs		
(92 plus) A		
(81-91) B		
(69-80) C		
(55-68) D	64	
(39-54) E		
(21-38) F		
(1-20) G		
Not energy efficient - higher running costs		
England & Wales		EU Directive 2002/91/EC



Agents Note: Whilst every care has been taken to prepare these particulars, they are for guidance purposes only. All measurements are approximate and are for general guidance purposes only and whilst every care has been taken to ensure their accuracy, they should not be relied upon and potential buyers/tenants are advised to recheck the measurements



Ground floor  
58.7 sq.m. (632 sq.ft.) approx.



1st floor  
56.4 sq.m. (608 sq.ft.) approx.

Marketed By mint homes Ltd

TOTAL FLOOR AREA : 115.2 sq.m. (1240 sq.ft.) approx.

Marketed by mint homes Ltd. Whilst every attempt has been made to ensure the accuracy of the information contained here, measurements of doors, windows, rooms and any other items are approximate and no responsibility is taken by any error. Prepared by Simon Lee  
Made with Metropix ©2025



Mint Homes  
14 Nicholas Gardens  
Pyrford  
Surrey  
GU22 8SD



Contact

01932 336177  
hello@minthomes.uk  
minthomes.uk

