



Woodnewton Road, Nassington Peterborough
£550,000 **Freehold**

**Sharman
Quinney**

Key Features



- ***NO ONWARD CHAIN***
- Beautiful stone built detached house
- Off road parking for three cars
- Three bedrooms with en-suite shower room to the master bedroom
- Village location close to shops and amenities

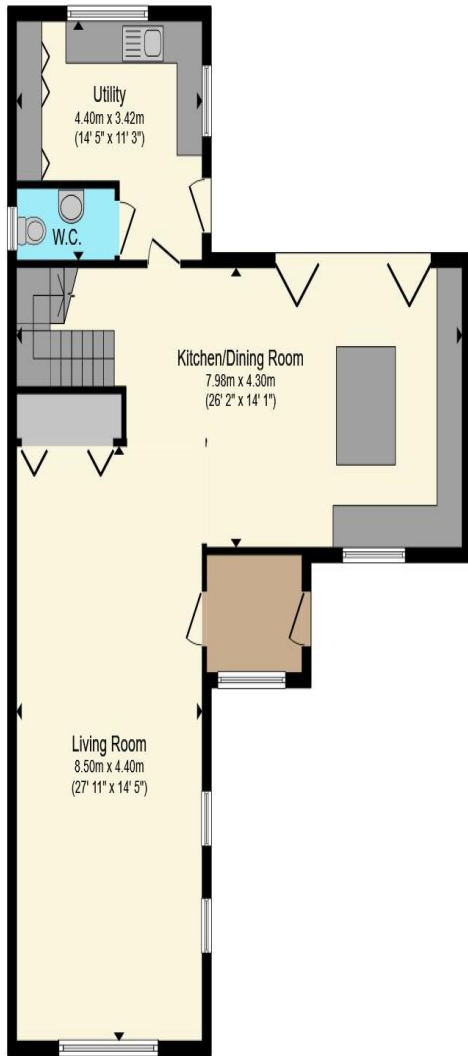
This attractive stone built detached home seamlessly blends character styling with contemporary living, set within a generous plot featuring a rear garden and newly constructed stone shed/barn, ideal for storage, a workshop or potential lifestyle use. A charming front porch provides a welcoming entrance and practical space for coats and footwear.

The ground floor is centred around a stunning open plan living space, designed for modern family life and entertaining. The sleek, modern kitchen is fitted with high quality units and complemented by a central island, creating a sociable focal point. The living area benefits from a feature log burner, adding both warmth and character. Further ground floor accommodation includes a downstairs

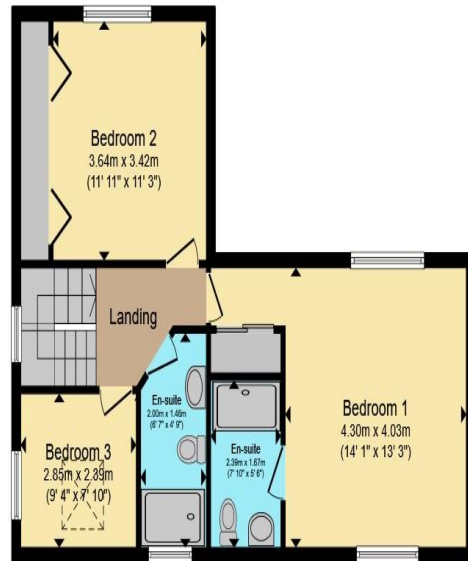


cloakroom and a separate utility room, offering excellent day to day practicality. To the first floor, the property offers three well proportioned bedrooms, with the principal bedroom benefitting from an en suite. The remaining bedrooms are served by a stylish shower room, finished to a modern standard. Externally, the enclosed rear garden provides a private and attractive outdoor space, ideal for relaxation and entertaining, while the newly built stone shed/barn enhances the property's charm and flexibility. The home is fitted with an air source heat pump and benefits from underfloor heating to both the ground and first floors, ensuring energy efficient and comfortable living throughout the year. This beautifully finished home offers a rare combination of traditional stone construction, modern open plan design and eco efficient heating, making it an excellent choice for buyers seeking character with contemporary convenience.





Ground Floor



First Floor



Outbuilding

Total floor area 169.8 m² (1,828 sq.ft.) approx

This floor plan is for illustrative purposes only. It is not drawn to scale. Any measurements, floor areas (including any total floor area), openings and orientation are approximate. No details are guaranteed, they cannot be relied upon for any purpose and they do not form part of any agreement. No liability is taken for any error, omission or misstatement. A party must rely upon its own inspection(s). Powered by www.propertybox.io

**Sharman
Quinney**

To view this property call Sharman Quinney on:
01832 274567

Selling your property?

Contact us to arrange a **FREE** home valuation.

 01832 274567

 The Old Town Hall Market Place, Oundle, Peterborough, Cambridgeshire, PE8 4BQ

 oundle@sharmanquinney.co.uk

 www.sharmanquinney.co.uk



 SCAN ME



Sharman Quinney Holdings Limited is registered in England and Wales under company number 4174227, Registered Office is Cumbria House, 16-20 Hockliffe Street, Leighton Buzzard, Bedfordshire, LU7 1GN. VAT Registration Number is 500 2481 05.

1: These particulars do not constitute part or all of an offer or contract. 2: The measurements indicated are supplied for guidance only and as such must be considered incorrect. 3: Potential buyers are advised to recheck the measurements before committing to any expense. 4: Sharman Quinney has not tested any apparatus, equipment, fixtures, fittings or services and it is the buyers interests to check the working condition of any appliances. 5: Sharman Quinney has not sought to verify the legal title of the property and buyers must obtain verification from their legal representative. 6: Intending purchasers will be asked to produce identification documentation at a later stage and we would ask your co-operation in order that there will be no delay in agreeing the sale. Ref: OUN202798 - 0003

