



Rainier Apartments, Croydon, CR0 6FD

£1,550 PCM



Rainier Apartments, Croydon, CR0 6FD

£1,550 PCM



This one double bedroom apartment offers a relaxed and peaceful environment and enjoys unobstructed scenic city views from its private thirteenth floor balcony.

Neutrally decorated and well maintained throughout, the accommodation briefly comprises a modern open plan living room with double aspect floor to ceiling windows, a modern fully fitted kitchen area, double bedroom with built-in sliding wardrobe, contemporary bathroom and a separate large utility / storage cupboard to the entrance hall.

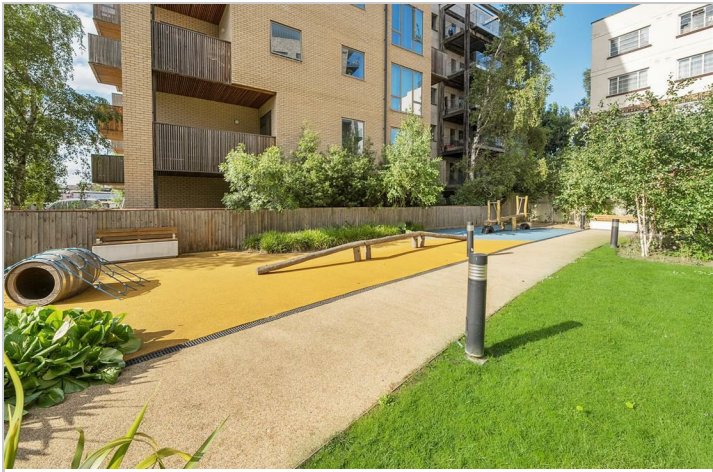
Residents benefit from a concierge service, well equipped fitness suite, lift access, cycle storage and gated communal gardens.

Parking is available at an additional cost.

Transport links are key with East Croydon train station just 0.2 miles away and providing direct links to London Bridge (16 mins), London Victoria (17 mins), St. Pancras Int (30 mins), Gatwick Airport (15 mins) and the south coast. Other local facilities include, the Tramlink network with links to Wimbledon and Beckenham, multiple bus routes and the popular BOXPARK with its lively and vibrant atmosphere.

Experience urban living at its best in this well connected residence.

Council Tax Band: D (London Borough of Croydon)
Holding Deposit: £357



Road Map



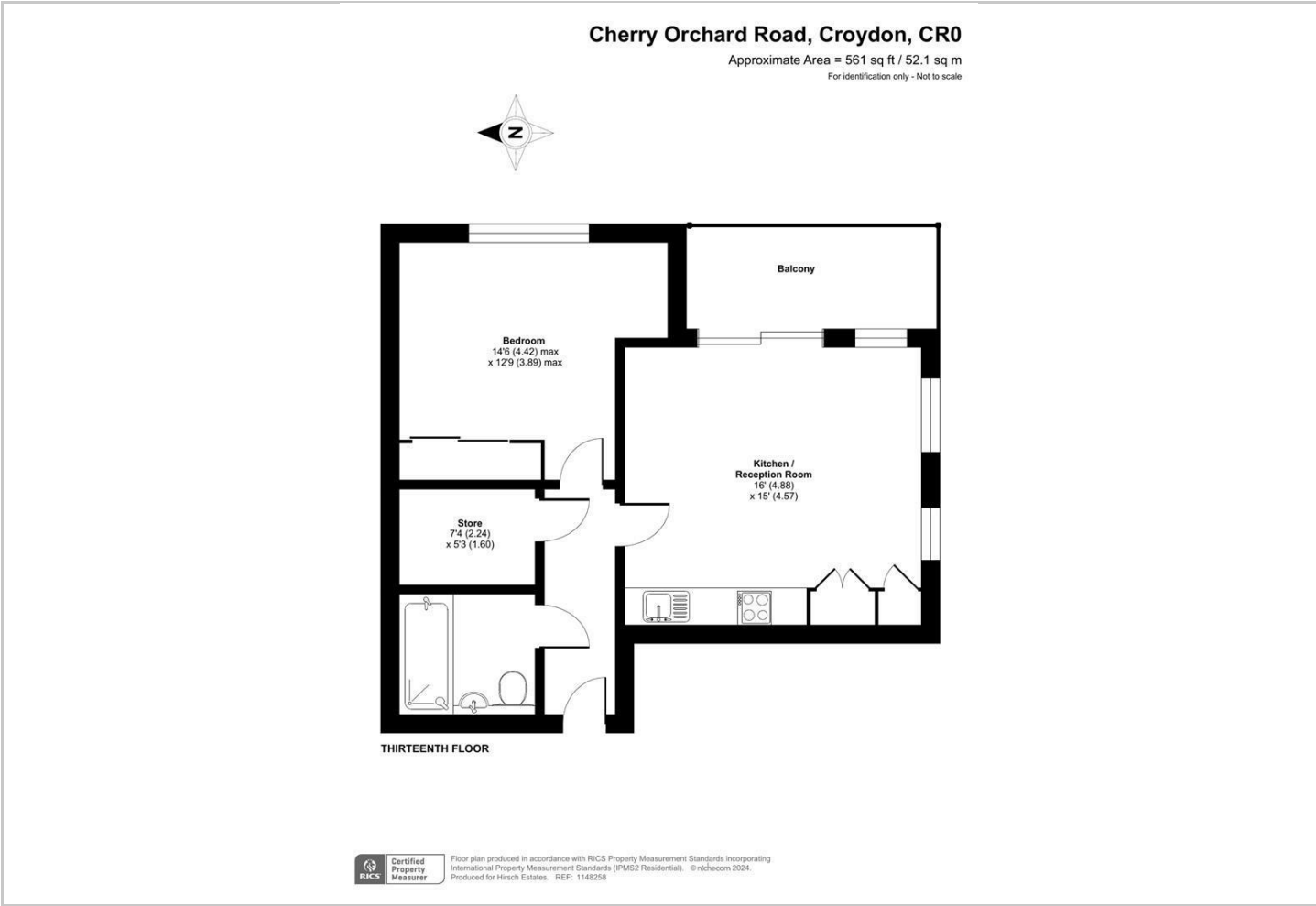
Hybrid Map



Terrain Map



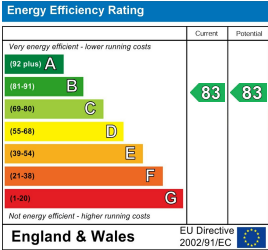
Floor Plan



Viewing

Please contact our Hirsch Estates Office on 020 3002 0587 if you wish to arrange a viewing appointment for this property or require further information.

Energy Efficiency Graph



These particulars, whilst believed to be accurate are set out as a general outline only for guidance and do not constitute any part of an offer or contract. Intending purchasers should not rely on them as statements of representation of fact, but must satisfy themselves by inspection or otherwise as to their accuracy. No person in this firms employment has the authority to make or give any representation or warranty in respect of the property.