



GODLEY ROAD, SW18

£625,000

- Split level maisonette
- Four double bedrooms
- Private garden
- Two modern bathrooms
- Sought after location
- Energy rating: E





ABOUT THE HOME

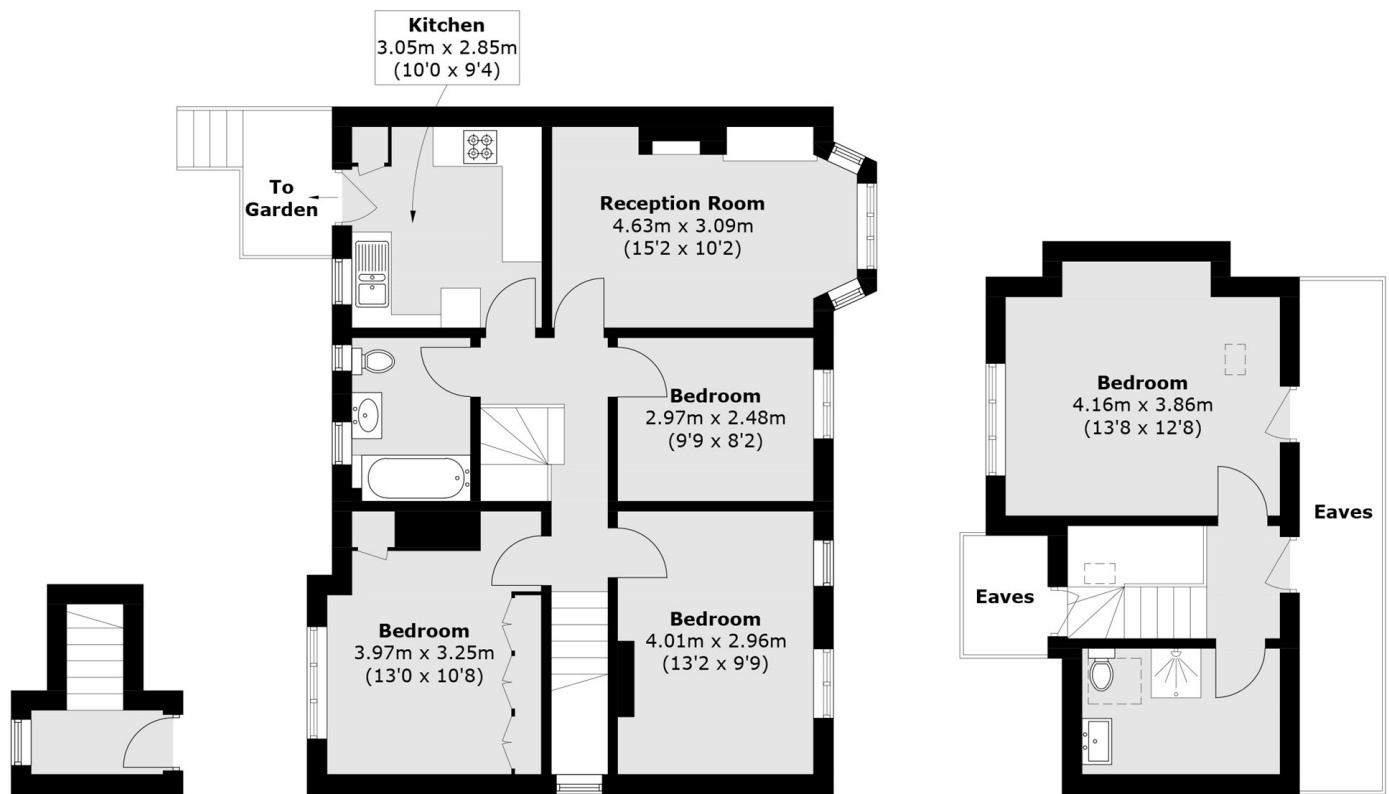
A well presented, four bedroom 1930's maisonette with a private garden.

The property has been thoughtfully extended into the loft by the current owners to create an excellent family home. Accessed via its own private front door, the first-floor accommodation comprises a bright front-facing reception room, a well-appointed kitchen, a family bathroom finished to a high standard, and three generously sized double bedrooms. Stairs lead to the second floor, which features an impressive principal bedroom and a second contemporary bathroom. The property further benefits from being the end of terrace, ample eaves storage and a well-maintained private garden.

The property is situated on the ever popular Magdalen Estate, conveniently located for Beatrix Potter school, Earlsfield railway station and less than 0.7 of a mile from the beautiful wide open spaces of Wandsworth Common.







Ground Floor

First Floor

Second Floor

Total area (approx.): 102.1 sq. m (1,098.8 sq. ft)
(Excluding Eaves)

JACKSONS EARLSFIELD

372-374 Garratt Lane,
Earlsfield, London, SW18 4ES
Sales: 020 8971 7979
Lettings: 020 8971 7070

Energy Rating: E We aim to make our particulars both accurate and reliable. However they are not guaranteed; nor do they form part of an offer or contract. If you require clarification on any points then please contact us, especially if you're traveling some distance to view. Please note that appliances and heating systems have not been tested and therefore no warranties can be given as to their good working order.