



2 Gloucester Crescent Hedingham Drive, Englefield Green, TW20 0HG

£825,000

2 Gloucester Crescent Heddingham Drive, Englefield Green, TW20 0HG

Set within the magnificent grounds of Magna Carta Park and forming part of the prestigious Audley Cooper's Hill luxury retirement village, this exceptional ground floor apartment offers an outstanding opportunity to enjoy independent living within one of Surrey's most sought-after retirement communities. Beautifully presented by the current owner, the apartment enjoys a wonderful position with two private terraces; one benefiting from all-day sunshine and the other overlooking attractive woodland, creating a peaceful and picturesque setting.

The spacious and thoughtfully designed accommodation comprises two generous double bedrooms, including a principal bedroom with a luxurious en-suite shower room, together with a separate guest bathroom. The impressive SieMatic kitchen is fully fitted with a comprehensive range of integrated appliances including a fridge/freezer, dishwasher, oven, hob, microwave and washer/dryer, whilst the spacious reception room provides an ideal space for both relaxing and entertaining. Further benefits include underfloor heating throughout and direct access to the beautifully maintained communal grounds.

Audley Cooper's Hill is set within 66 acres of stunning parkland and offers residents an unrivalled lifestyle. At the heart of the development is the magnificent historic main building, home to the exclusive Audley Club, where residents can enjoy a health and wellbeing centre, swimming pool, fitness suite, restaurant, bistro bar, library, tennis court and putting green.

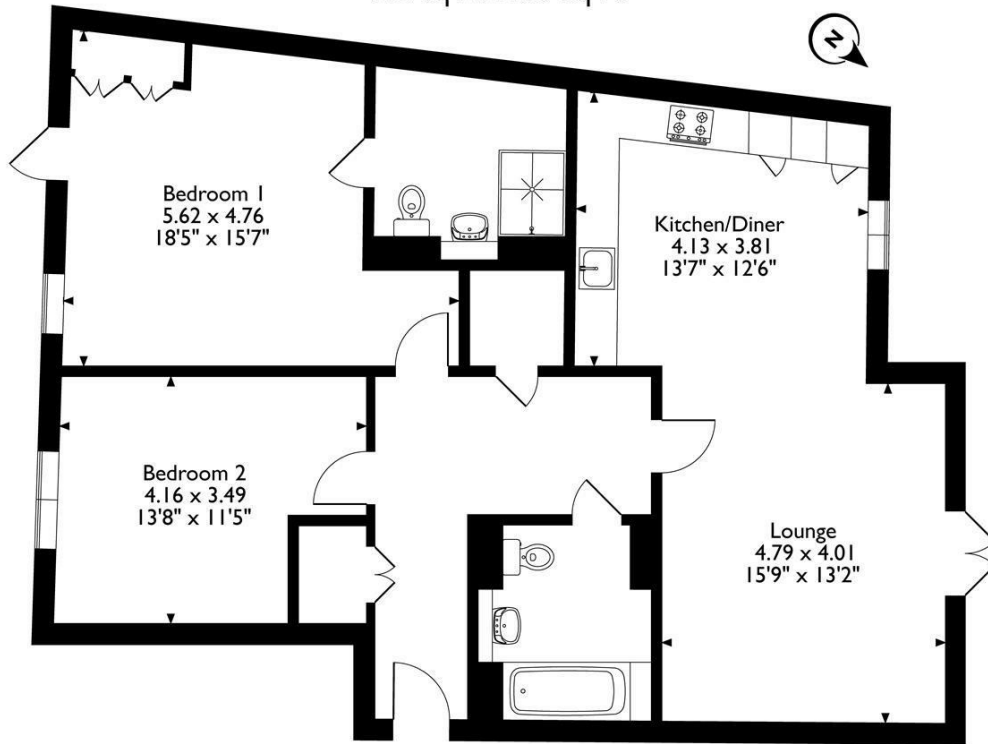
Flexible Audley Care packages are also available, providing additional peace of mind should support be required in the future.

Ideally positioned in the charming village of Englefield Green, the development is within easy reach of Windsor Great Park, Runnymede and the historic town of Windsor, offering a superb selection of shops, restaurants, cafés and cultural attractions. This is retirement living at its finest, combining luxury accommodation, with first-class facilities



Floor Plan

2, HEDINGHAMDRIVE, GLOUCESTER CRESCENT, Englefield Green, Surrey
 Approximate Gross Internal Area
 103 Sq M / 1109 Sq Ft



Ground Floor Flat

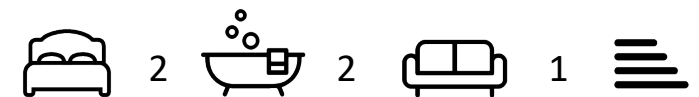
Please note that the location of doors, windows and other items are approximate and this floorplan is to be used for illustrative purposes only. Unauthorized reproduction is prohibited.



Features

- Ground Floor Apartment
- Set in a Luxury Retirement Village
- En Suite Shower Room
- Superbly Fitted Kitchen/Breakfast Room
- Two Private Terraces
- 1109 Square feet of accommodation!
- Two Double Bedrooms
- Further Bathroom
- Lovely Living Room
- Amazing Leisure Facilities!

10 St Judes Road, Englefield Green, Surrey TW20 0BY
 Tel 01784 433696
 sales@aspenestateagents.co.uk



Tenure - Leasehold Council Tax Band - F

