



Westbourne Terrace, W2

£3,500 Per week

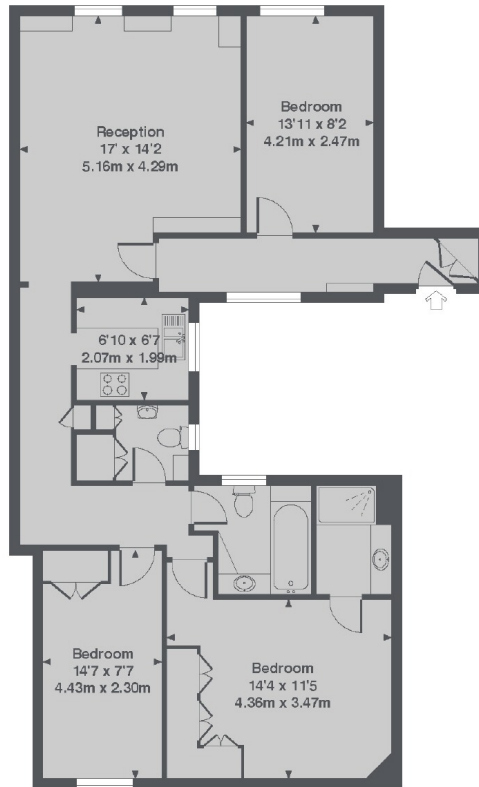
A large three double bedroom apartment on the fourth floor of a period building with lift access, close to Hyde Park and local transport. With a spacious front facing reception with room to dine the property also has two bathrooms.

Westbourne Terrace is a tree-lined terrace of Victorian buildings, near to the shops, bars and restaurants of Queensway and Westbourne Grove. Paddington and Lancaster Gate are the closest stations.

Features

- Three Bedrooms
- Large Reception
- Separate Kitchen
- Dishwasher
- Lift Access
- Fourth Floor

Westbourne Terrace, London, W2



4th Floor

Westbourne Terrace, W2
Total Approx. Floor area 966 Sq. Ft. (89.8 Sq. M.)