



Knott Close, Great Ashby, Stevenage, SG1 6NP

DELIGHTFULLY PRESENTED Two Bedroom Apartment with ALLOCATED PARKING SPACE Situated on the Edge of GREAT ASHBY Overlooking St Nicholas Park, Features include FITTED KITCHEN, Lounge/Diner, TWO DOUBLE BEDROOMS, Fitted Bathroom, 108 Years Remaining on the Lease, VIEWING STRONGLY RECOMMENDED

£230,000

Knott Close, Great Ashby, Stevenage, SG1 6NP



- Delightfully Presented Two Bedroom Apartment
- Fitted Kitchen
- Fitted Bathroom
- Allocated Parking Space
- Lounge/Diner
- 108 Years Remaining
- Situated on the Edge Of Great Ashby Overlooking St Nicholas Park
- Two Double Bedrooms
- Viewing Strongly Recommended

Entrance Hallway

3'6 x 12'7 (1.07m x 3.84m)

Laminate Flooring, Coved Ceiling, Mega Flow Tank, Storage Cupboard with Consumer Unit, Spot Lighting, Entry Phone System, Heating Control.

Kitchen Area

9'4 x 8'0 (2.84m x 2.44m)

Gas Hob and Oven, Double Panel Radiator, Spot Lighting, Ideal IOCS Wall Mounted Boiler, Roll Top Worksurfaces, Built in Electrolux Washing Machine, Space for Fridge/Freezer, Stainless Steel with Drainer and Mixer Tap, Vinyl Floor Tiles, Tiled Splash Back, Vanity Cupboard, Tiled Splash Back, Extractor Fan.

Bathroom

4'10 x 6'7 (1.47m x 2.01m)

P-Shaped Bath with Mixer Tap and Mains Shower Over, Wash Basin with Mixer Tap,

Vanity Cupboard, Shaver Point, Low Level WC, Vanity Cupboard, LED Spot Lighting, Double Panel Radiator, Extractor Fan.

Bedroom One

9'6 x 11'3 (2.90m x 3.43m)

Double Panel Radiator, Double Glazed Window to Front Aspect, Coved Ceiling, Fitted Wardrobes.

Bedroom Two

10'8 x 9'4 (3.25m x 2.84m)

Double Glazed Window to Front Aspect, Coved Ceiling, Double Panel Radiator.

Lounge Area

10'5 x 17'2 (3.18m x 5.23m)

Laminate Flooring, Coved Ceiling, Double Panel Radiator, Double Glazed Window to Rear Aspect, T.V Point, Single Panel Radiator, Delightful Views, Single Panel Radiator.

Allocated Parking

One allocated parking situated to front of block.

Local Information and Lease Information

Ground Rent - £100 P/A

Service Charge - 106.00 PCM

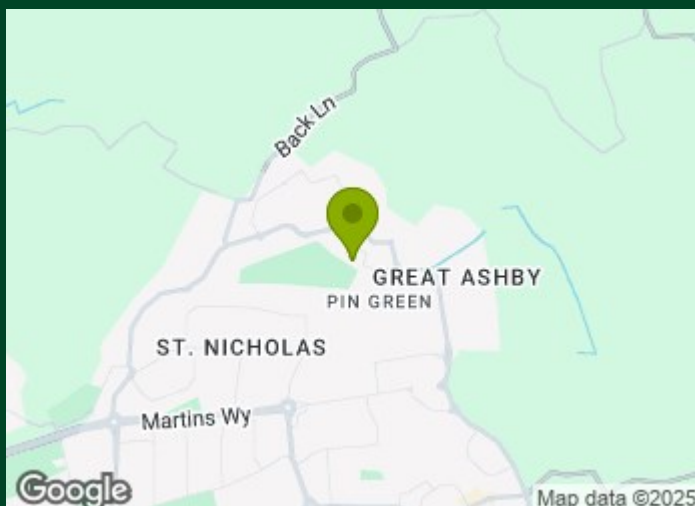
Council Tax Band C

108 Years Remaining

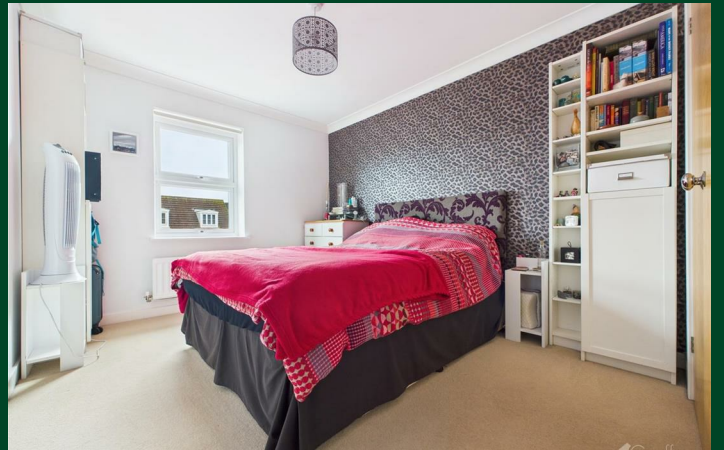
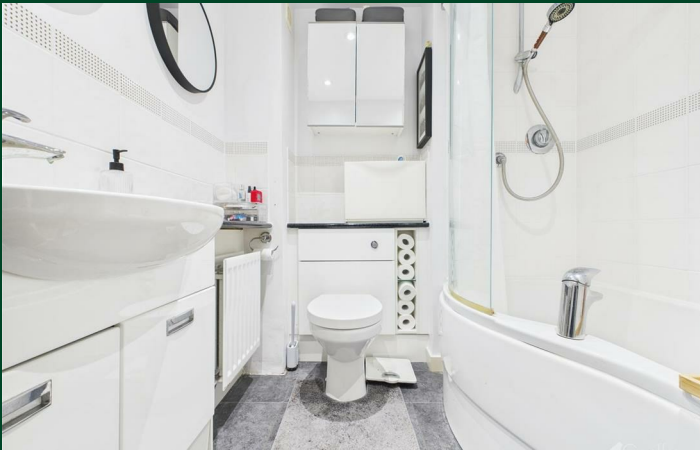
There is no ground review period.

Local Information

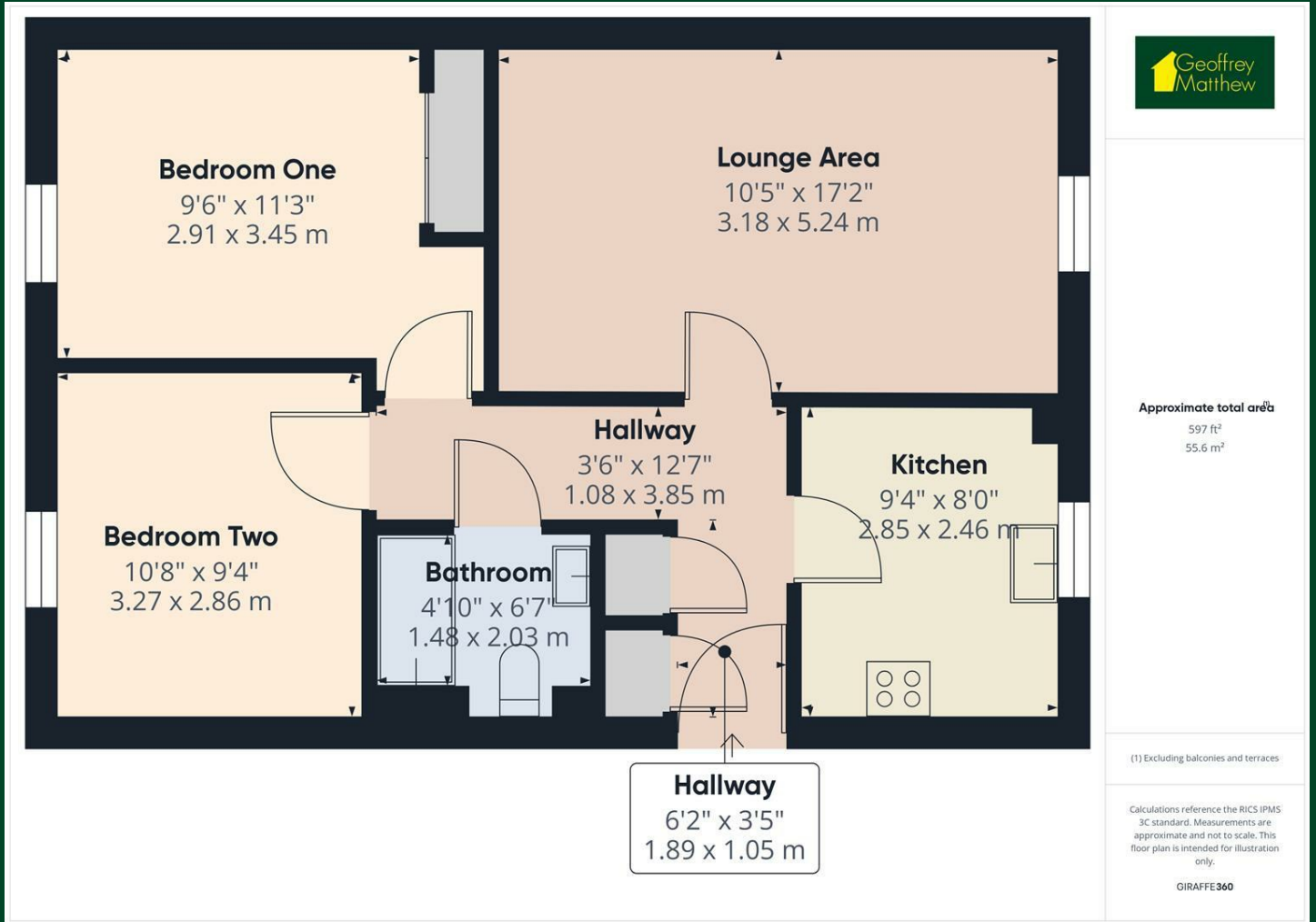
Knott Close is ideally situated a short distance walk from the Neighbourhood Shopping Centre which has an array of shopping options, this property is within easy catchment to Round Diamond School which has exceptional ofsted rating.



Directions



Floor Plan



Council Tax Details

Band C

These particulars, whilst believed to be accurate are set out as a general outline only for guidance and do not constitute any part of an offer or contract. Intending purchasers should not rely on them as statements of representation of fact, but must satisfy themselves by inspection or otherwise as to their accuracy. No person in this firm's employment has the authority to make or give any representation or warranty in respect of the property.