



The Oak House Back Lane Shipbourne, Tonbridge, TN11 9PP

£3,500 Per month

Nestled within an Area of Outstanding Natural Beauty, this attractive four-bedroom semi-detached barn conversion offers spacious and versatile accommodation arranged across four floors.

The ground floor features a welcoming entrance hall, a generous sitting room, and a stylish open-plan kitchen and dining area. On the lower ground floor, there is an impressive additional reception room, along with a utility room and cloakroom. The first floor provides a principal bedroom with en-suite shower room, two further bedrooms, and a modern family bathroom, while the top floor hosts a further bedroom with its own en-suite cloakroom.

Outside, the property benefits from ample driveway parking and an enclosed rear garden with a patio seating area, perfect for entertaining and taking in the peaceful surroundings.

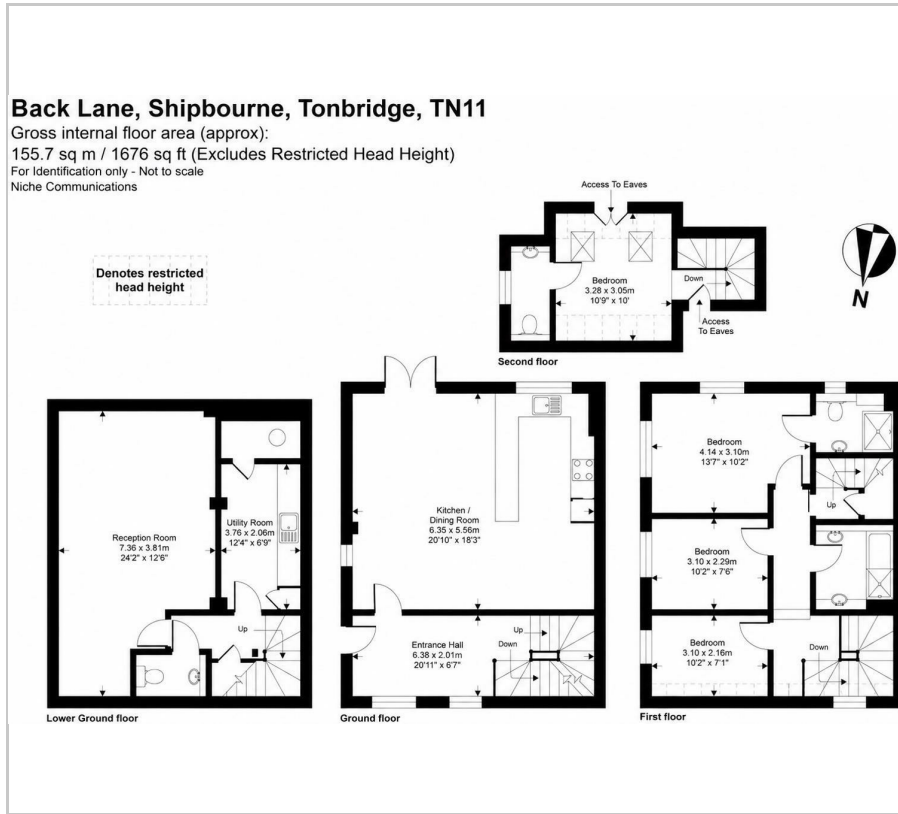
Viewing

Please contact our Jack Charles Tonbridge Office on 01732 75 75 80 if you wish to arrange a viewing appointment for this property or require further information.

- Characterful Semi-Detached House
- 4 Bedrooms
- 2 Spacious Reception Rooms
- Open-plan Kitchen / Breakfast Room
- Utility Room
- Family Bathroom
- Shower Room
- 2 Cloak Rooms
- Well-Sized Garden
- Large Driveway with Ample Parking



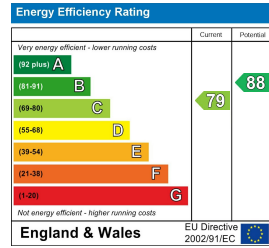
Floor Plan



Area Map



Energy Efficiency Graph



These particulars, whilst believed to be accurate are set out as a general outline only for guidance and do not constitute any part of an offer or contract. Intending purchasers should not rely on them as statements of representation of fact, but must satisfy themselves by inspection or otherwise as to their accuracy. No person in this firm's employment has the authority to make or give any representation or warranty in respect of the property.

t: 01732 75 75 80 | e: tonbridge@jackcharles.co.uk | www.jackcharles.co.uk

Registered in England and Wales Company Number: 12336461 | Registered office: Castle Lodge, Castle Street, Tonbridge, TN9 8BA