



20 Bermuda Holiday Park Newport Road

Hemsby, Great Yarmouth, NR29 4NN

£24,950



20 Bermuda Holiday Park Newport Road

Hemsby, Great Yarmouth, NR29 4NN

Aldreds are pleased to offer this attractively presented semi detached holiday chalet on this popular well serviced coastal village site. The property offers an open plan living room leading to the quality fitted kitchen with built in appliances, two double bedrooms and bathroom. Outside the chalet faces a southerly direction and has nearby parking. The property also benefits from double glazed windows and pvc clad exterior making it very low maintenance and is sold fully equipped with quality furnishings having been run as a holiday let.

Living Room

14'6" x 10'0" (4.42 x 3.05)

Double glazed window to front aspect, double glazed pvc entrance door, tiled flooring, wall mount tv and air conditioning unit/heater, sofas, open access to:

Kitchen

9'4" x 5'1" (2.84 x 1.55)

Re-fitted with a quality white gloss finish kitchen with wall and matching base units with work surface over, part tiled walls, recess with fridge, four ring ceramic hob with extractor hood over, built in electric oven and microwave, single drainer stainless steel sink with mixer tap, tiled flooring, double glazed window to rear aspect.

Bedroom 1

9'1" x 7'10" (2.77 x 2.39 (2.78 x 2.38))

Plus wardrobe cupboard, tiled flooring, air conditioning unit, double glazed window to front aspect, double bed and bedside cabinets.

Inner Lobby

Built in airing cupboard with a hot water cylinder, doors leading off to:

Bedroom 2

9'5" x 7'9" (2.87 x 2.36)

Plus wardrobe cupboard, tiled flooring, triple bunk bed and cabinet, double glazed window to rear aspect, aire conditioning unit/heater.

Bathroom

Aqua panel walls, panel bath with shower over, pedestal wash basin, # low level wc, tiled flooring, frosted double glazed window to rear aspect.





Outside

The property faces a southerly direction with a covered paved terrace and communal grounds. There is also nearby parking.

Tenure

Leasehold

99 year lease from 1 May 1977

Site fees for 2023 - £1,189.68

Dogs are not allowed.

Services

Mains water, electric and drainage.

Council Tax

Great Yarmouth Borough Council - Band 'A' (10% reduction for holiday use)

Location

Hemsby is a coastal village approximately 7 miles north of Great Yarmouth. The tourist-based part of the village lies along Beach Road and is commonly known as Hemsby Beach. At the beach end of the road are a number of cafes, shops and amusement arcades, ten-pin bowling, bingo, a play area and many different machines. A variety of seaside-style cafes and restaurants are available, offering sit-down meals, take-away fish and chips and Chinese food. Fun fairs, crazy golf courses and children's rides also feature on a number of sites along the street.

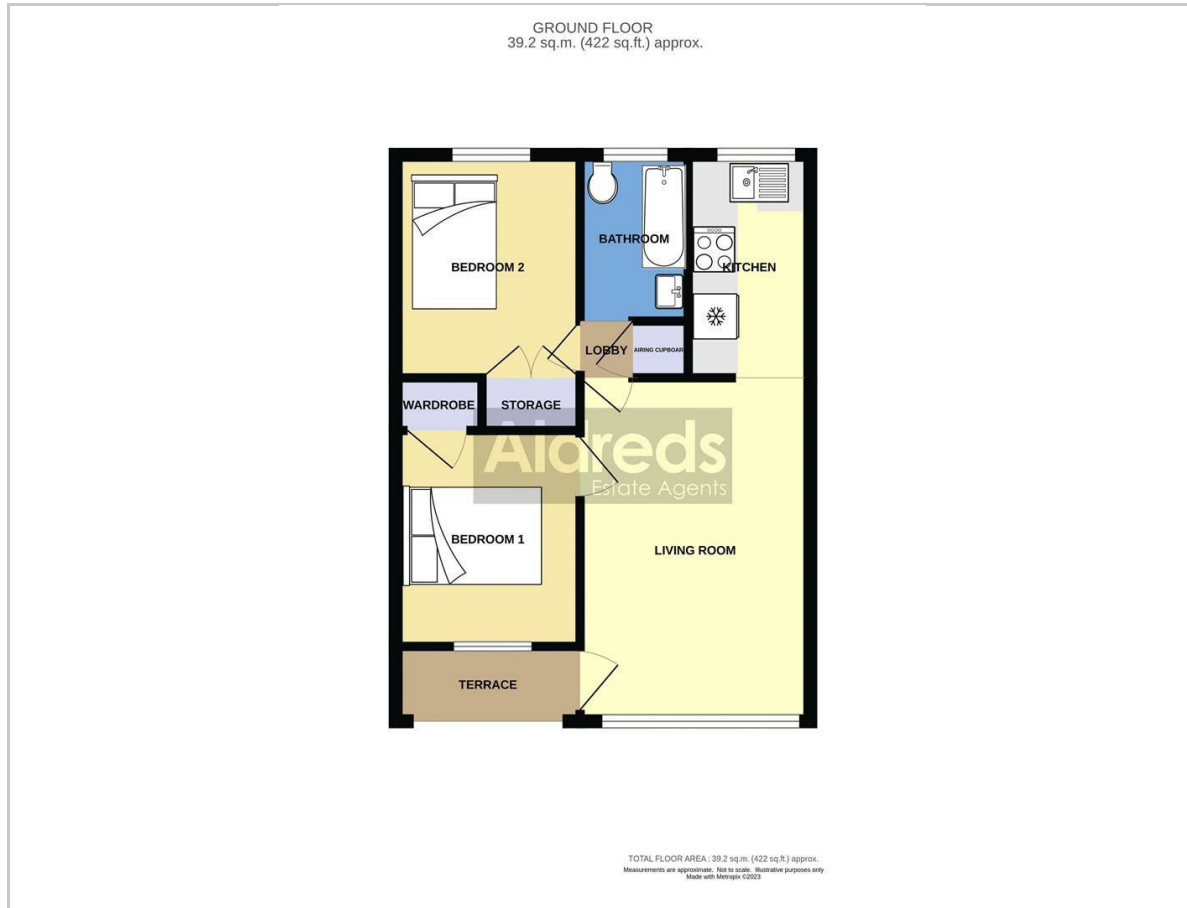
Directions

On arriving in the village of Hemsby from Great Yarmouth, turn right into Newport Road, turn left into Bermuda Holiday Site, follow the access road as it bears round to the left, continue to the end of the road where parking is available and the chalet can be found towards the right hand corner.

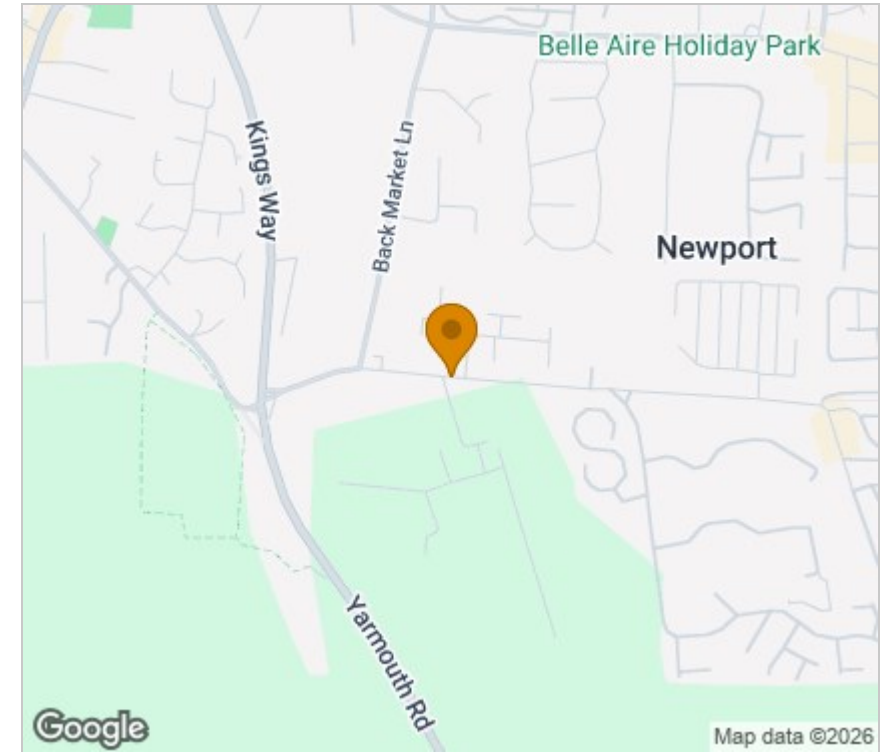
[Y12668/03/26/CF](#)



Floor Plan



Area Map



Energy Efficiency Graph

Viewing

Please contact our Aldreds Great Yarmouth Office on 01493 844891 if you wish to arrange a viewing appointment for this property or require further information.

Disclaimer

These particulars are issued on an understanding that all negotiations shall be conducted through Messrs. Aldreds. Please note: Messrs. Aldreds for themselves and for the vendors or lessors of this property whose agents they are given notice that: 1. Particulars are set out as a general outline only for guidance of intending purchasers or lessees, and do not constitute nor constitute part of, an offer or contract. 2. All descriptions, dimensions, references to condition and necessary permissions for use and occupation, and other details are given without responsibility and any intending purchasers or tenants should not rely on them as statements or representations of fact but must satisfy themselves by inspection or otherwise as to the correctness of each of them. 3. No person in the employment of Messrs. Aldreds has any authority to make or give any representation or warranty whatever in relation to this property. 4. If you are proposing to visit the property and are travelling some distance please check with Aldreds on the issue of availability prior to travelling. 5. Aldreds Property Consultants and associated services may offer additional services to the prospective purchaser for which they will be entitled to receive a commission.

Aldreds are pleased to be working with Mortgage Advice Bureau. They're an award-winning mortgage broker with over 1,400 advisers across the UK, and have access to over 12,000 mortgage products from over 90 lenders. Aldreds Estate Agents Ltd receive a commission of £200 on each completed case. Your home may be repossessed if you do not keep up repayments on your mortgage. There may be a fee for mortgage advice. The actual amount you pay will depend upon your circumstances. The fee is up to 1%, but a typical fee is 0.3% of the amount borrowed. Mortgage Advice Bureau is a trading name of Mortgage Seeker Limited which is an appointed representative of Mortgage Advice Bureau Limited and Mortgage Advice Bureau (Derby) Limited which are authorised and regulated by the Financial Conduct Authority. Mortgage Seeker Limited Registered Office: Lovewell Blake, Sixty Six North Quay, Great Yarmouth, Norfolk, NR30 1HE. Registered in England Number: 03721415. 6. Potential purchasers should check with their providers that the broadband and mobile phone coverage they would require is available.

17 Hall Quay, Great Yarmouth, Norfolk, NR30 1HJ

Tel: 01493 844891 Email: yarmouth@aldreds.co.uk <https://www.aldreds.co.uk/>

Registered in England Reg. No. 08945751 Registered Office: 17 Hall Quay, Great Yarmouth, Norfolk NR30 1HJ

Directors: Mark Duffield B.S.c. FRICS. Dan Crawley MNAEA Paul Lambert MNAEA