



## Holland Gardens, TW8

£415 Per week

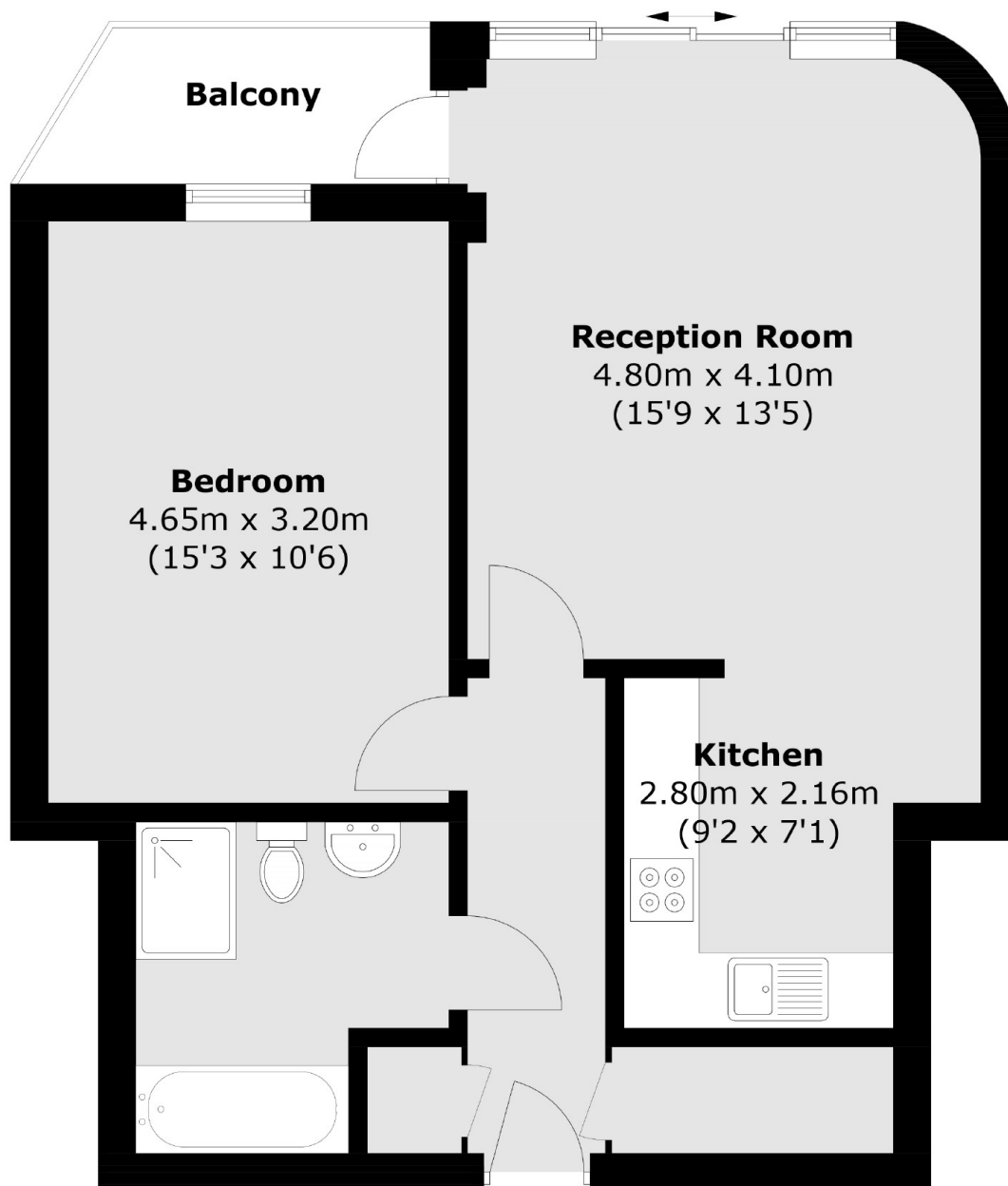
A modern one bedroom apartment featuring an open-plan kitchen, wooden flooring and a private balcony with views of the River Thames. The residents of the development benefit from access to an on site gym and the opportunity to relax in the sauna or jacuzzi which is exclusive to residents.

Situated in a popular riverside development with stunning views of the River Thames and under half a mile from Kew Bridge rail station, which has a frequent service into central London.

### Features

- One Bedroom
- Open Plan Kitchen
- Wooden Floors
- Private Balcony
- Modern Development
- Concierge Service

# Holland Gardens, Brentford, TW8



Total area (approx.): 57.2 sq. m (615.7 sq. ft)  
Balcony: 3.6 sq. m (38.7 sq. ft)