



INVERFORTH HOUSE

Hampstead, NW3



SURROUNDED BY HAMPSTEAD HEATH

A Grade II Listed building now comprising of 7 apartments and 2 houses set within 4 acres, Inverforth House offers a full suite of amenities, including 24/7 Concierge and security.



4



4



4

EPC

tbc

Local Authority: London Borough of Camden

Council Tax band: H

Tenure: Leasehold

Ground rent: Peppercorn

Service charge: Please Enquire

Guide Price: £9,500,000



Originally built in 1807, Inverforth House has a rich history. The mansion's current name comes from Lord Inverforth, who bought the estate in 1925. Residents enjoy exclusive access to abundant private lawn space, meticulously curated gardens and an on-site tennis court.









Timeless grandeur exudes from every detail of this stunning apartment, with interiors designed by Sera of London. Spanning 5,408 sq ft of exquisitely curated interior living space set across two lateral floors, the home features 12' high ceilings on the first floor level, a Sonos sound system, parquet oak flooring and marble floors and vanities.







On the ground floor there is a grand entrance hall that leads to an expansive and voluminous reception room, study, family/dining room, breakfast room, eat-in kitchen with island and Gaggenau appliances, laundry room and bedroom suite





On the lower floor there is a principal bedroom suite with walk-in wardrobe and ensuite and two further bedrooms each with an ensuite.







The apartment has a magnificent and expansive private terrace measuring approximately 1,580 sq ft as well as a private lower terrace measuring approximately 763 sq ft. In addition, there are four parking spaces which are split between the private forecourt and a twin garage.

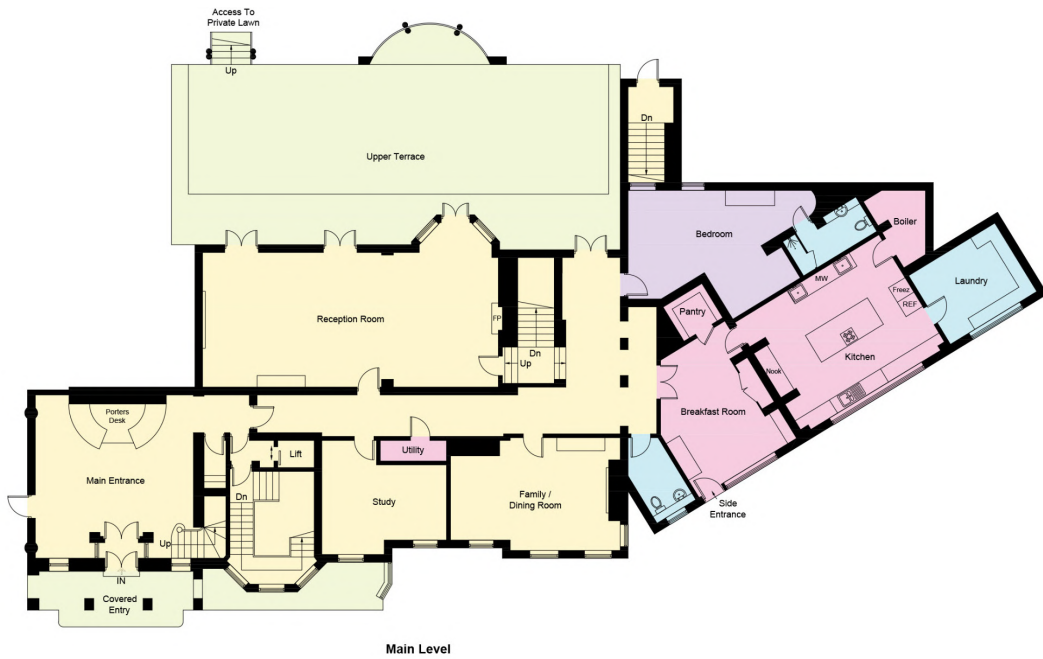




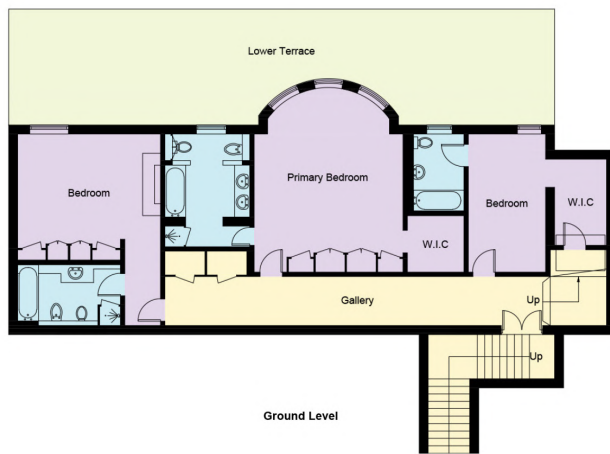
Inverforth House is located on North End Way in the North-West corner of Hampstead Heath, just minutes from Hampstead High Street and close to Central London.







Main Level



Ground Level



7,751 square foot in Total
 5,408 square foot of Interior Space / 2,343 square foot of Exterior Space
 1,580 square foot Private Upper Level Terrace / 763 square foot Private Lower Level Terrace

This plan is for layout guidance only. Not drawn to scale unless stated. Windows and door openings are approximate. Whilst every care is taken in the preparation of this plan, please check all dimensions, shapes and compass bearings before making any decisions reliant upon them. (ID767266)

We would be delighted
to tell you more.

Katy Brookes
020 7317 7966
Katy.Brookes@knightfrank.com

Knight Frank Hampstead
58-62 Heath Street, London
NW3 1EN

[knightfrank.co.uk](https://www.knightfrank.co.uk)

Your partners in property

1. Particulars: These particulars are not an offer or contract, nor part of one. You should not rely on statements given by Knight Frank in the particulars, by word of mouth or in writing ("information") as being factually accurate about the property, its condition or its value. Neither Knight Frank nor any joint agent has any authority to make any representations about the property, and accordingly any information given is entirely without responsibility on the part of Knight Frank. 2. Material Information: Please note that the material information is provided to Knight Frank by third parties and is provided here as a guide only. While Knight Frank has taken steps to verify this information, we advise you to confirm the details of any such material information prior to any offer being submitted. If we are informed of changes to this information by the seller or another third party, we will use reasonable endeavours to update this as soon as practical. 3. Photos, Videos etc: The photographs, property videos and virtual viewings etc. show only certain parts of the property as they appeared at the time they were taken. Areas, measurements and distances given are approximate only. 4. Regulations etc: Any reference to alterations to, or use of, any part of the property does not mean that any necessary planning, building regulations or other consent has been obtained. A buyer must find out by inspection or in other ways that these matters have been properly dealt with and that all information is correct. 5. Fixtures and fittings: A list of the fitted carpets, curtains, light fittings and other items fixed to the property which are included in the sale (or may be available by separate negotiation) will be provided by the Seller's Solicitors. 6. VAT: The VAT position relating to the property may change without notice. 7. To find out how we process Personal Data, please refer to our Group Privacy Statement and other notices at <https://www.knightfrank.com/legals/privacy-statement>.

Particulars dated March 2026 Photographs and videos dated 2025. All information is correct at the time of going to print. Knight Frank is the trading name of Knight Frank LLP. Knight Frank LLP is a limited liability partnership registered in England and Wales with registered number OC305934. Our registered office is at 55 Baker Street, London W1U 8AN. We use the term 'partner' to refer to a member of Knight Frank LLP or an employee or consultant. A list of members names of Knight Frank LLP may be inspected at our registered office. If you do not want us to contact you further about our services then please contact us by either calling 020 3544 0692, email to marketing.help@knightfrank.com or post to our UK Residential Marketing Manager at our registered office (above) providing your name and address.