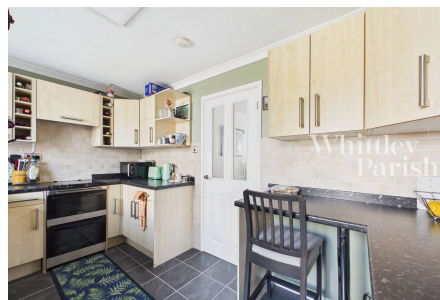
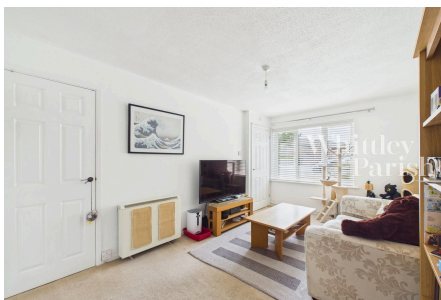


# St. Leger, Long Stratton, Norwich, NR15 2SY

£200,000-£210,000

2 1 1



A well presented two-bedroom end-terraced home, ideally suited to first-time buyers, downsizers, or investors alike. Offering bright and stylish accommodation throughout, this charming property combines comfortable living with practical modern features. An entrance hall leads through to a spacious living room which is flooded with natural light and provides a welcoming space to relax and entertain. The contemporary kitchen is fitted with a range of modern storage units and offers ample space for appliances, complemented by a useful breakfast bar ideal for casual dining and everyday living. Upstairs, the first-floor landing gives access to two well-proportioned bedrooms and a modern family bathroom

## Key Features

- GUIDE PRICE £200,000-£210,000
- Single Garage and Driveway
- Wrap Around Gardens
- Kitchen with Breakfast Bar
- Bathroom with replaced sink and vanity unit
- Two Double Bedrooms
- Walking Distance to Amenities and Bus Routes Freehold
- EPC Rating- D - Council Tax Band- A
- Mains Drainage - Electric Heating

