



Whitebeam Walk, Wirral, CH49 3QJ

welcome to

Whitebeam Walk, Wirral

A superb modern detached home in this sought after cul-de-sac off Thorns Drive!

Offered for sale with vacant possession this a detached home not to be missed. With large family accommodation, four bedrooms and a master bedroom en-suite. Call us today and arrange to view!



Property Description

This superb family detached home has a entrance hall with understairs storage and also has an adjacent ground floor WC.

The main living room is located to the front and is L-shaped with connecting doors leading to the dining room which would open for entertaining if required.

The dining room is a large reception room with further doors leading to the sun lounge to the rear. The sun lounge is a perfect spot to relax, overlooking the gardens space and a great family area.

The kitchen has a range of base and wall units with fitted appliances.

Upstairs the property continues to impress, with four bedrooms and bathroom and the master bedroom which has a large en-suite.

Outside the home has a large driveway with parking for multiple vehicles and a lawned garden space with shrubs and borders. There is a large garage at the end of the drive with electronic up and over doorway.

The rear gardens are secluded and a hidden gem located behind the garage with lawn and mature shrubs and borders.

The property is the first home on the left as you enter the cul-de-sac and it is a perfect home to have your family within.

This home has been a great property for our current vendors, and it has a lovely feeling throughout which you will need to view to appreciate.

Entrance Hall

Gf Wc

Living Room

19' 9" max l-shape x 19' 4" max l-shape (6.02m max l-shape x 5.89m max l-shape)

Dining Room

16' 8" x 12' 5" (5.08m x 3.78m)

Kitchen

12' 2" x 8' 8" (3.71m x 2.64m)

Sun Lounge

15' 4" x 10' 9" (4.67m x 3.28m)

Landing

Bedroom One

13' 9" x 13' 4" (4.19m x 4.06m)

En-Suite

Bedroom Two

13' 9" x 13' 5" (4.19m x 4.09m)

Bedroom Three

9' 1" x 8' 5" (2.77m x 2.57m)

Bedroom Four

10' 1" x 8' 3" (3.07m x 2.51m)

Bathroom

Garage

16' 11" x 16' 9" (5.16m x 5.11m)



view this property online [jonesandchapman.co.uk/Property/GRE106394](https://www.jonesandchapman.co.uk/Property/GRE106394)



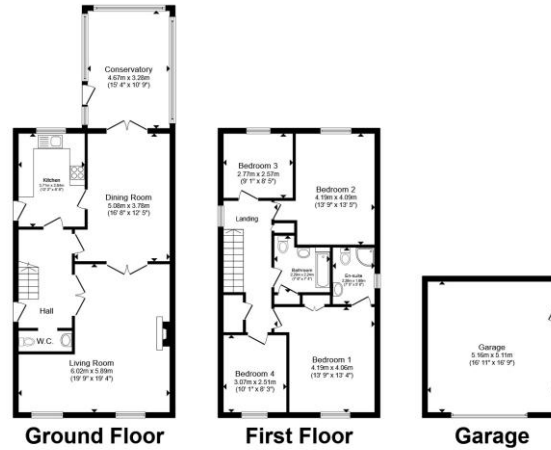
welcome to

Whitebeam Walk, Wirral

- Superb Detached home
- Four Bedrooms
- Lovely Cul-de-sac
- L-shaped Lounge and separate diningroom
- Modern kitchen and sunlounge to rear

Tenure: Freehold EPC Rating: Awaiting

Council Tax Band: E



£395,000

Total floor area 175.9 m² (1,893 sq.ft.) approx
This floor plan is for illustrative purposes only. It is not drawn to scale. Any measurements, floor areas (including any total floor area), openings and orientation are approximate. No details are guaranteed, they cannot be relied upon for any purpose and they do not form part of any agreement. No liability is taken for any error, omission or misstatement. A party must rely upon its own inspection(s). Powered by www.propertybox.io

jones & chapman



Please note the marker reflects the postcode not the actual property

view this property online [jonesandchapman.co.uk/Property/GRE106394](https://www.jonesandchapman.co.uk/Property/GRE106394)



Property Ref:
GRE106394 - 0002

1. MONEY LAUNDERING REGULATIONS Intending purchasers will be asked to produce identification documentation at a later stage and we would ask for your co-operation in order that there is no delay in agreeing the sale. 2. These particulars do not constitute part or all of an offer or contract. 3. The measurements indicated are supplied for guidance only and as such must be considered incorrect. Potential buyers are advised to recheck measurements before committing to any expense. 4. We have not tested any apparatus, equipment, fixtures or services and it is in the buyers interest to check the working condition of any appliances. 5. Where an EPC, or a Home Report (Scotland only) is held for this property, it is available for inspection at the branch by appointment. If you require a printed version of a Home Report, you will need to pay a reasonable production charge reflecting printing and other costs. 6. We are not able to offer an opinion either written or verbal on the content of these reports and this must be obtained from your legal representative. 7. Whilst we take care in preparing these reports, a buyer should ensure that his/her legal representative confirms as soon as possible all matters relating to title including the extent and boundaries of the property and other important matters before exchange of contracts.

jones & chapman



0151 677 9473



Greasby@jonesandchapman.co.uk



142 Greasby Road, Greasby, Merseyside, CH49 3NQ



[jonesandchapman.co.uk](https://www.jonesandchapman.co.uk)